



**MUNICIPALITY OF MAPUTO  
MUNICIPAL COUNCIL  
ADMINISTRATION OF KATEMBE MUNICIPAL DISTRICT**

**AGRICULTURAL ACTIVITY IN KATEMBE**



# 1. Geographical location

KaTembe Municipal District is situated in the South of Maputo City.

## Geographic Boundaries:

- ❖ **North** - Maputo Bay;
- ❖ **South** - District of Matutuíne through Av. do Metical
- ❖ **East** - Maputo Bay
- ❖ **Oeste** - Boane District across the Tembe River





## 2. Administrative Division

Administratively it is subdivided into five (5) Bairros and sixty-three (63) quarters.

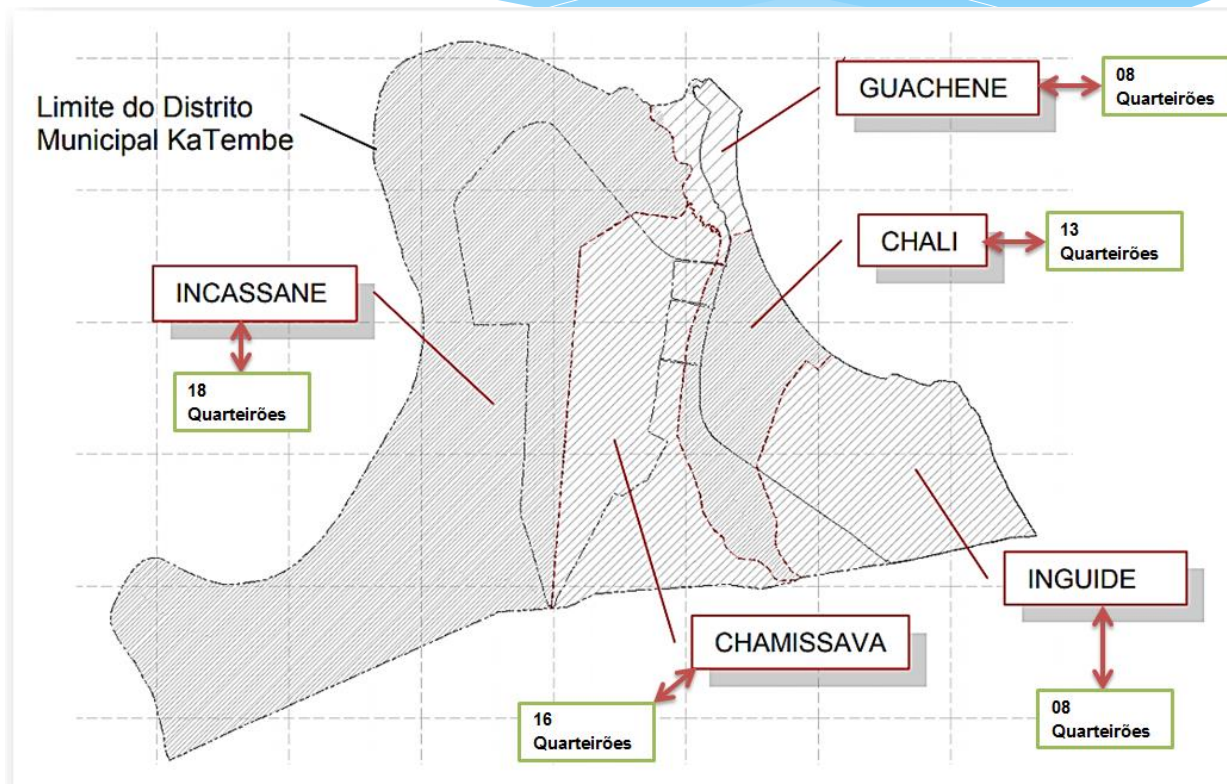
### 3. Surface area, population and languages

Total surface area - 174 Km<sup>2</sup>.

Population - 32,280 inhabitants (2017 census)

#### Economic Activities :

- ❖ 80% - family agriculture,
- ❖ 10% - fishing
- ❖ 10% - commerce, service provision





# 3. Organization of the Productive System



## ❖ Cooperatives :

1. 20 de Setembro
2. Mão Tse Tung
3. Khammambo Frelimo

## ❖ Associations:

1. Armando Emílio Guebuza
2. Auto Apoio
3. Revolução Verde
4. Maria da Luz Guebuza

## ❖ Family Agriculture

## ❖ Business Sector



## 4. Assistência Técnica e Mercado



- \* A assistência técnica garantida pela rede de extensão da Direcção da Agricultura e Segurança Alimentar da Cidade de Maputo
- \* Produção de hortícolas diversas (Couve, Alface, Repolho, Cebola, Tomate, Beterraba e outras Hortícolas)
- \* Produção de tubérculos, leguminosas e cereais (zonas de sequeiro)
- \* Comercialização do produto feita localmente e pequena quantidade na cidade de Maputo
- \* Realização de feiras periódicas para venda de produtos



Fig. 01 Cultura de milho



Fig. 02 Feijão Nhemba



Fig. 03 Amendoim



## 5. HISTORY OF THE MULTIFUNCTIONAL SYSTEM



- ❖ Drinking water for livestock, grazing, and other social purposes, (human consumption, washing clothes and agricultural activities in the enclosure etc.)
- ❖ Number of animals: 1027
- ❖ To create an association with the objective of promoting livestock activities in the area which guarantee an increase in production and productivity and family profitability. To create a management and safety committee made up of the farmers themselves and of the community in general.



Fig. 04 Manioc



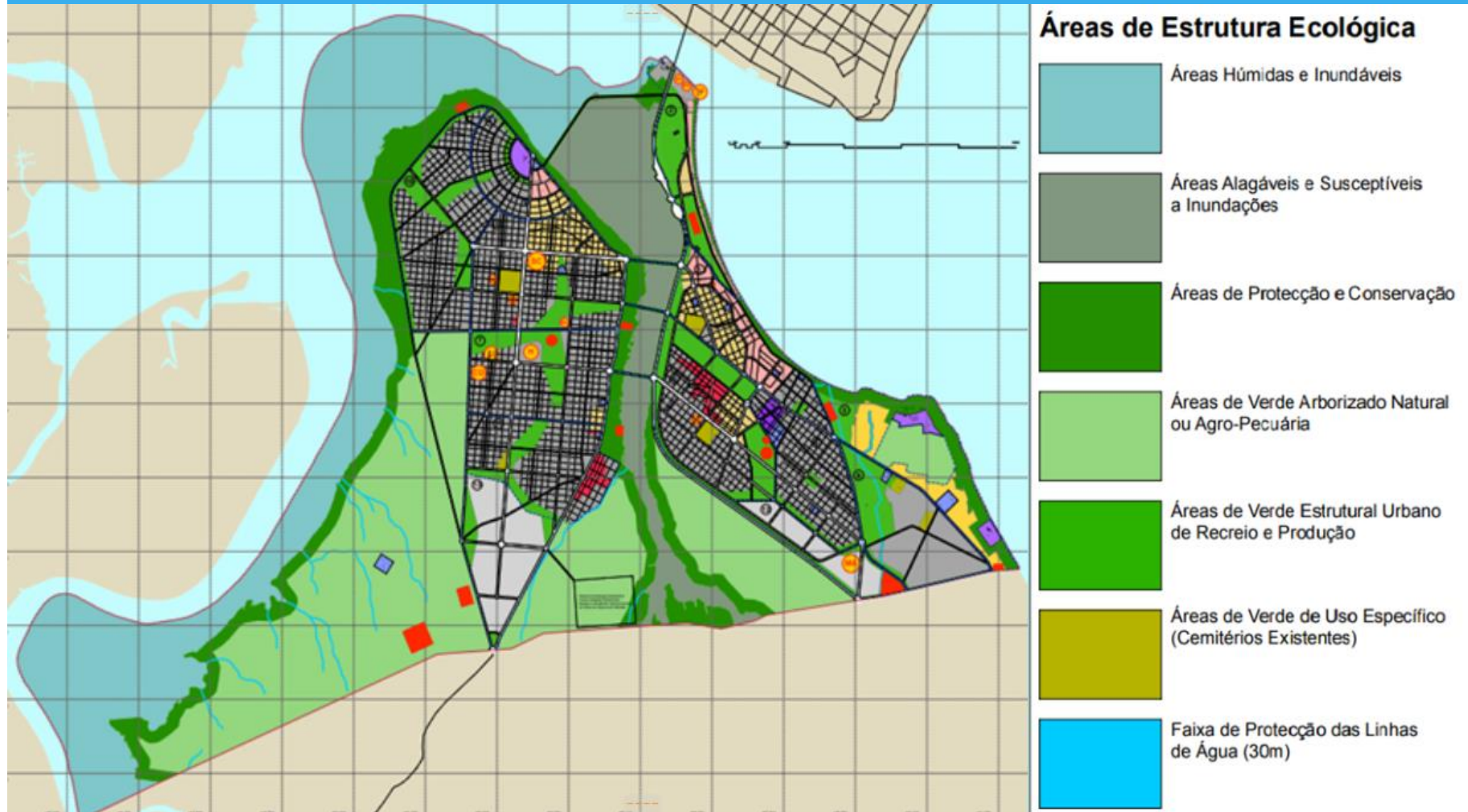
Fig. 05 Vegetables

## 9. Sector Needs in the District



- \* Greenhouses to cope with climate change;
- \* Improved seeds;
- \* Differentiated insecticides and pesticides;
- \* Irrigation systems;
- \* DUAT for associations;
- \* Special animal rearing area, duly parcelled and restricted to human habitation in Mutsekwa;
- \* Easy market access.

## 10. Challenges posed by the Urbanisation Plan

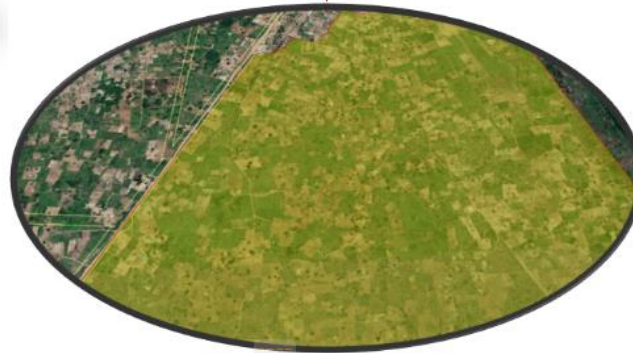
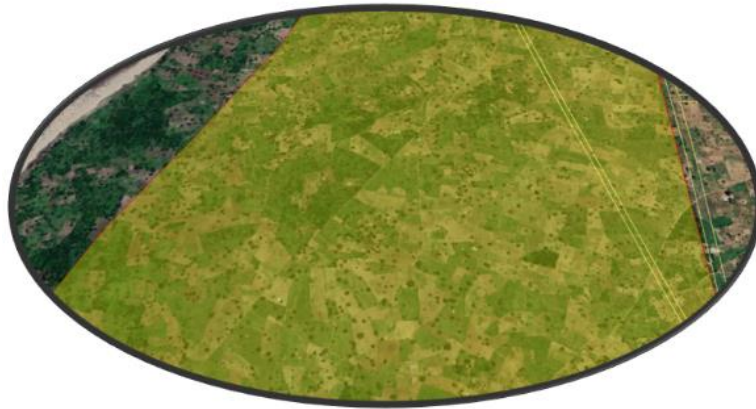




## 10. Challenges posed by the Urbanisation Plan



## 10. Challenges posed by the Urbanisation Plan





## 10. Challenges posed by the Urbanisation Plan

- ❖ The Urbanisation plan foresees an area of wooded natural green or agro-livestock
- ❖ It is in this area that agricultural and animal husbandry activities should be carried out
- ❖ Currently these areas are characterised by informal settlements and the practice of rain-fed agriculture
- ❖ There is a need for the implementation of partial plans and resettlement for the liberation of agricultural areas



A photograph of a garden area. In the center, a banana tree stands with several large, green leaves. Behind the tree is a wall made of grey cinder blocks. The ground in the foreground is dark brown soil with many small, green seedlings planted in rows. A blue shirt and some other items are hanging from the banana tree. The word "OBRIGADO" is written in large, bold, black letters across the middle of the image.

**OBRIGADO**