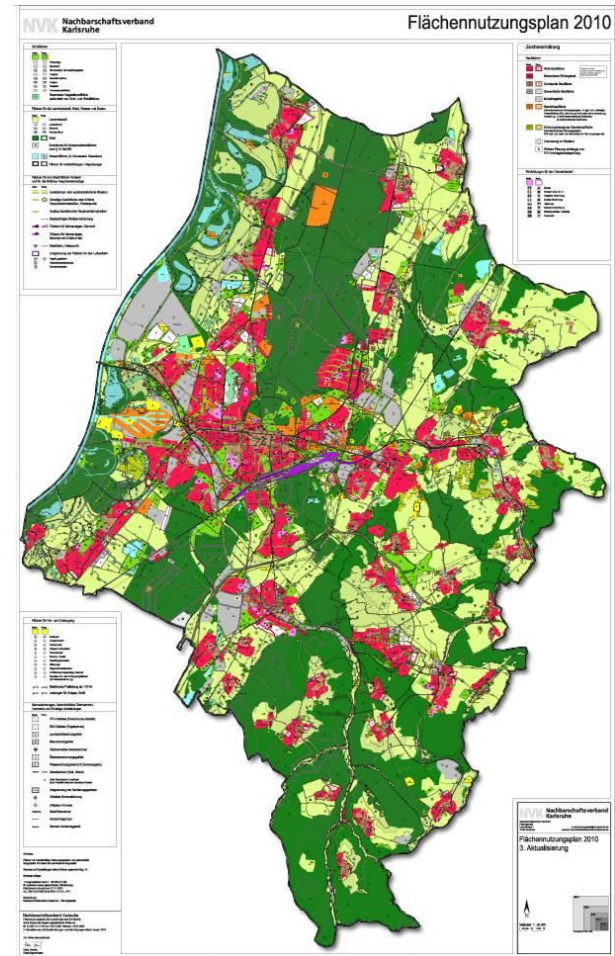


NVK

Nachbarschaftsverband Karlsruhe

“Flächennutzungsplan” (Land use plan)



1. Starting Point:

NVK

**Nachbarschaftsverband
Karlsruhe**

11 Municipalities



2. Institutional Setting:

Zusammensetzung Stimmen Vertreter

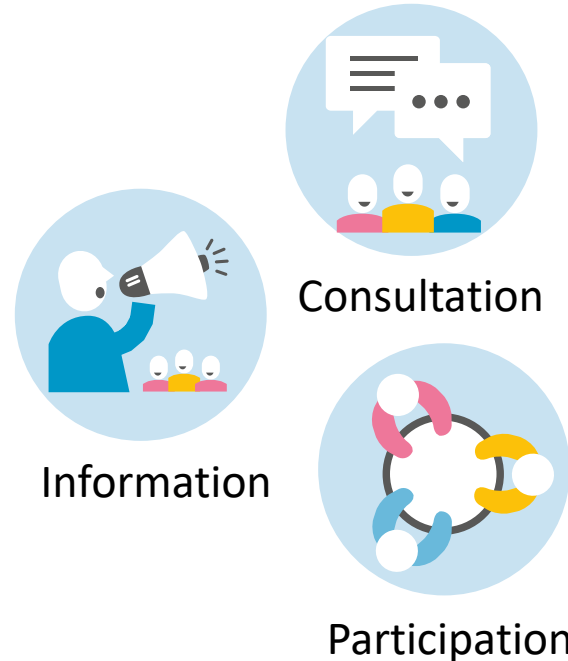
Verbands-
versammlung



Karlsruhe	60	17
Ettlingen	9	3
Eggenstein- Leopoldshafen	4	2
Karlsbad	4	2
Linkenheim- Hochstetten	2	2
Marxzell	1	2
Pfinztal	4	2
Rheinstetten	5	3
Stutensee	6	3
Waldbronn	3	2
Weingarten	2	2
Landratsamt	0	2
Summe	100	42



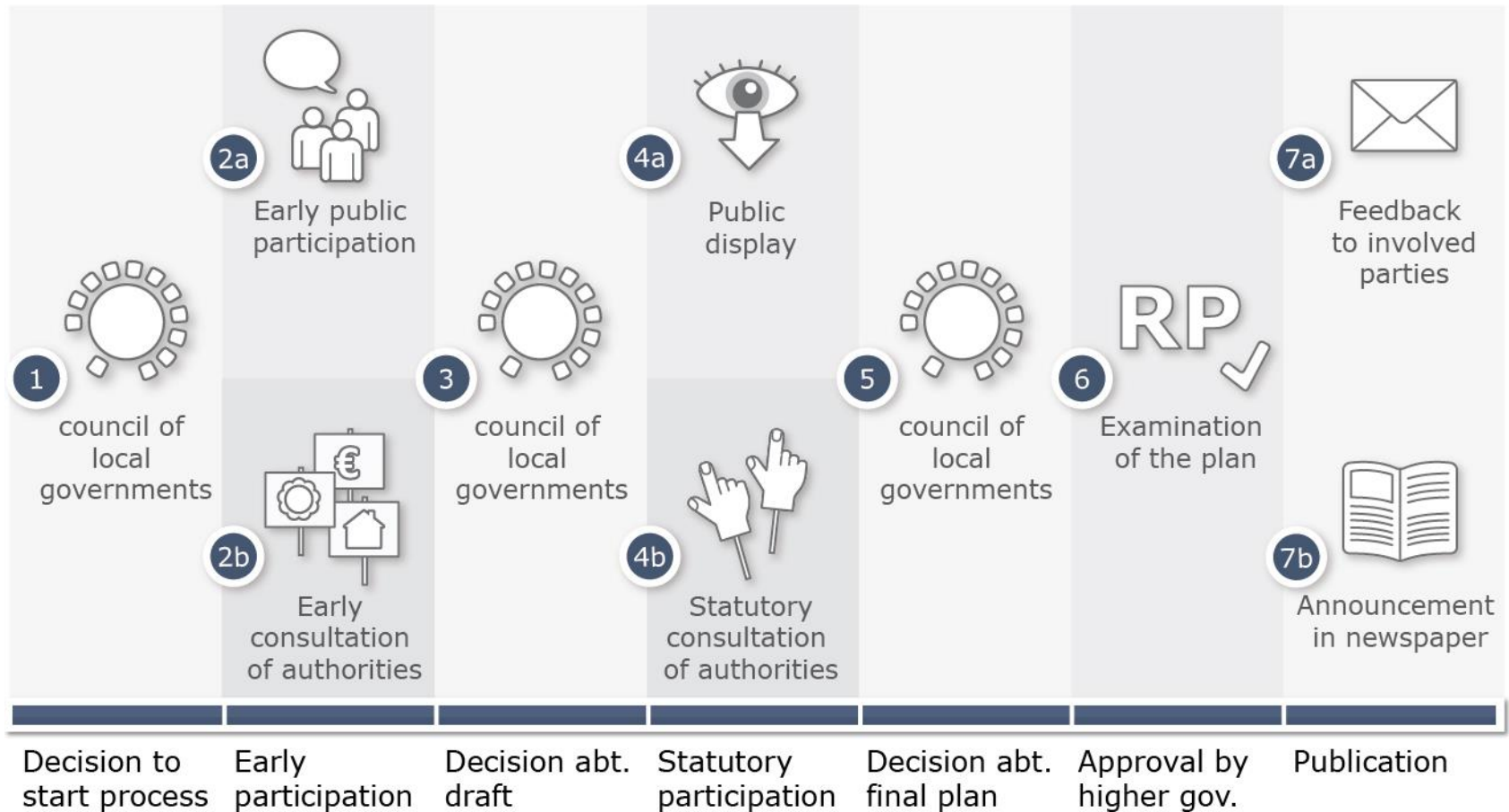
3. Approach: two ways of participation



“Formelle Beteiligung”
statutory participation
procedures

“Informelle Beteiligung”
individual participation
processes on different levels

Participation: the formal procedure



Participation: the additional tools

4 Workshops with inspection of potential building areas

area assessments further elaborated,
including for "exchange areas"

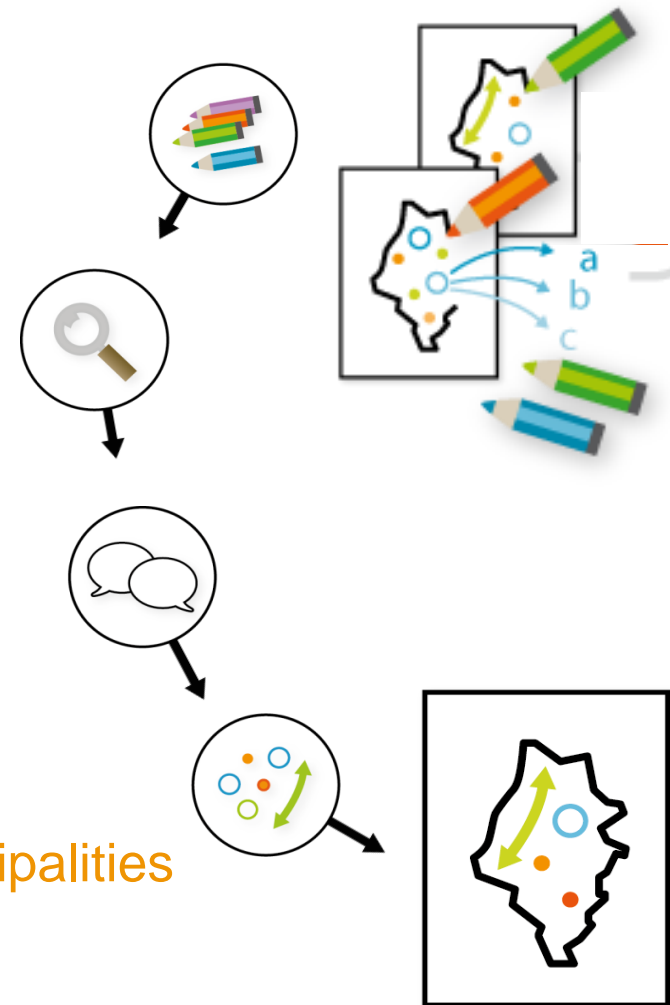
3 Landscape conferences

Bilateral talks between the municipalities
Discussion in municipal bodies
Developing alternatives

2 Specialist conferences

1 Role play with representatives of the municipalities

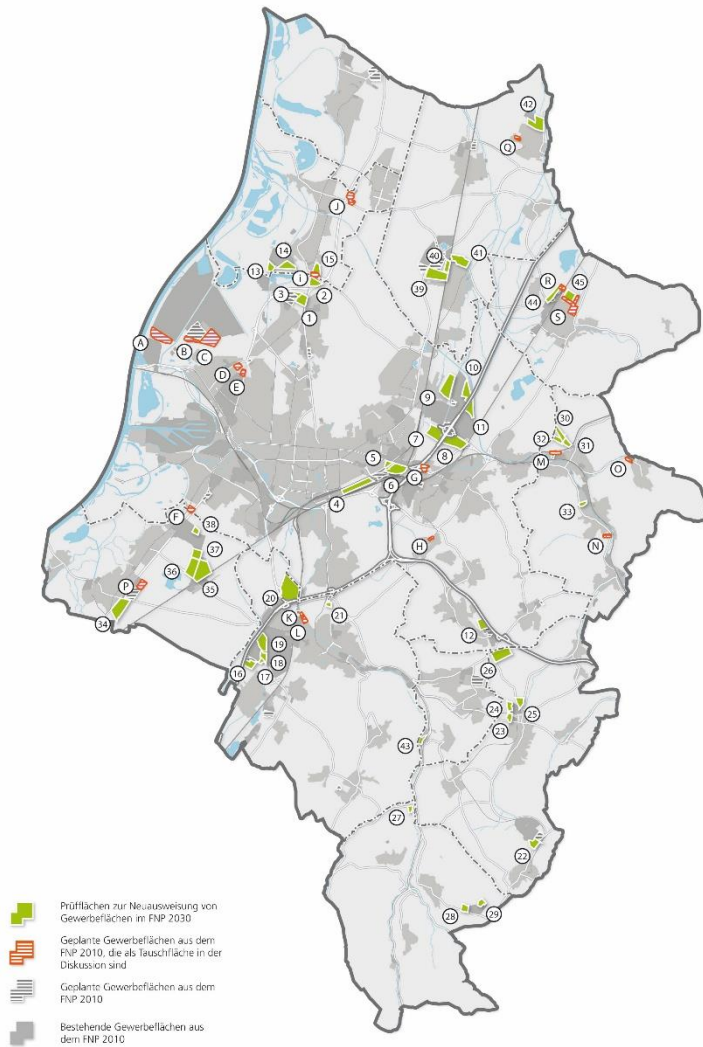
Closing discussion



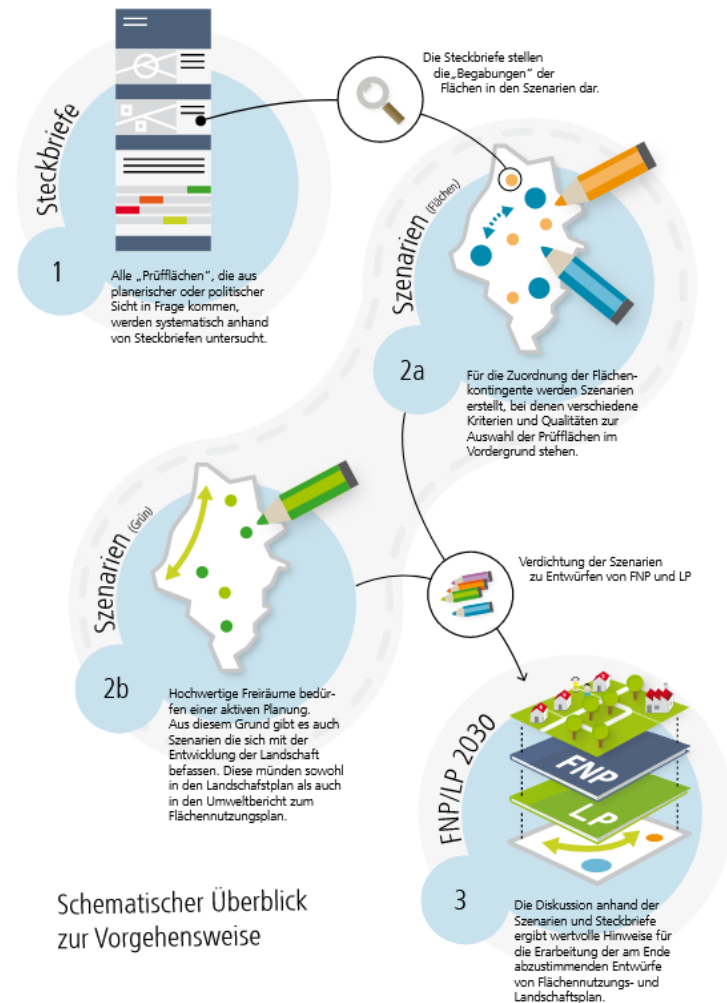
Participation: the additional tools



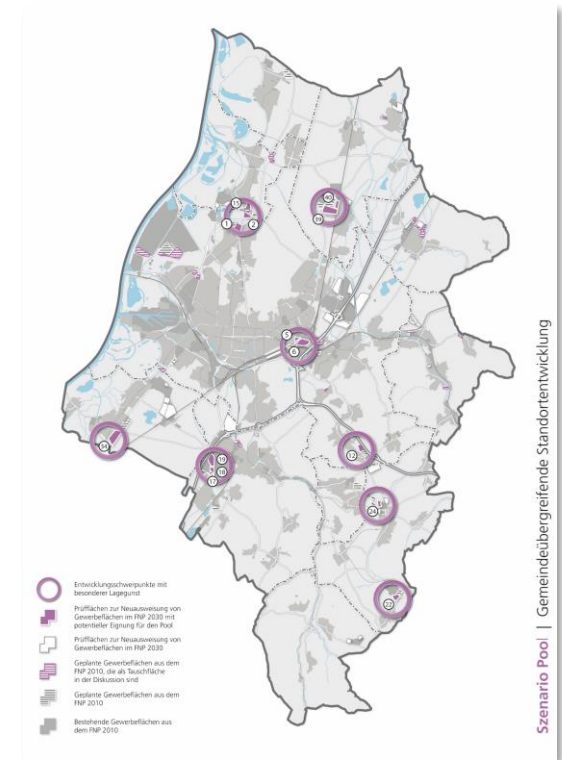
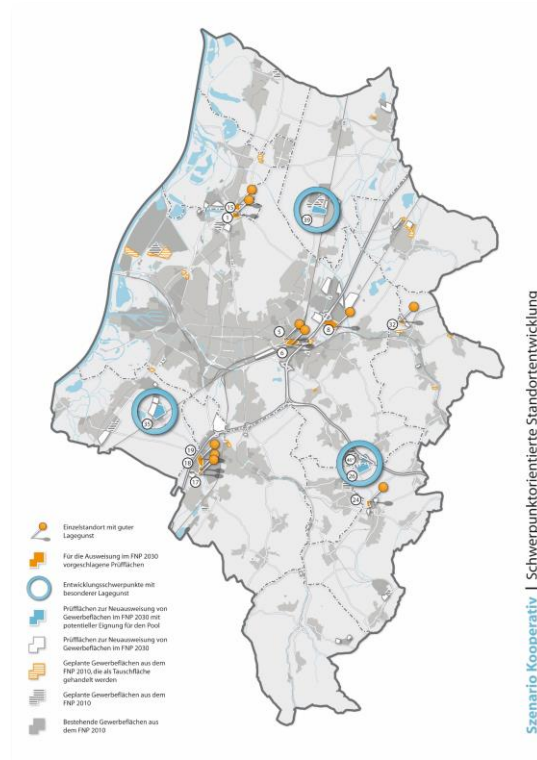
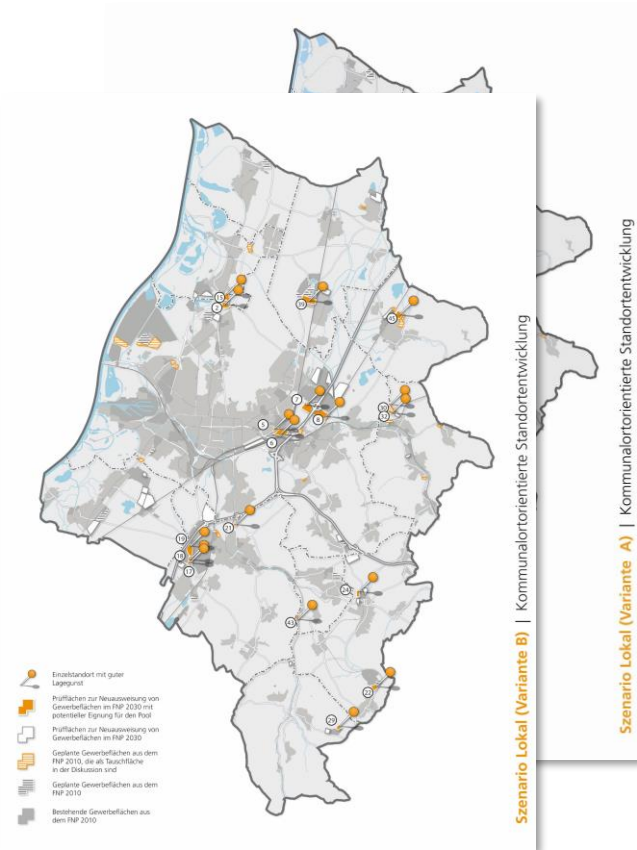
Our way to a solution



Übersichtskarte | Prüfflächen Stand März 2013

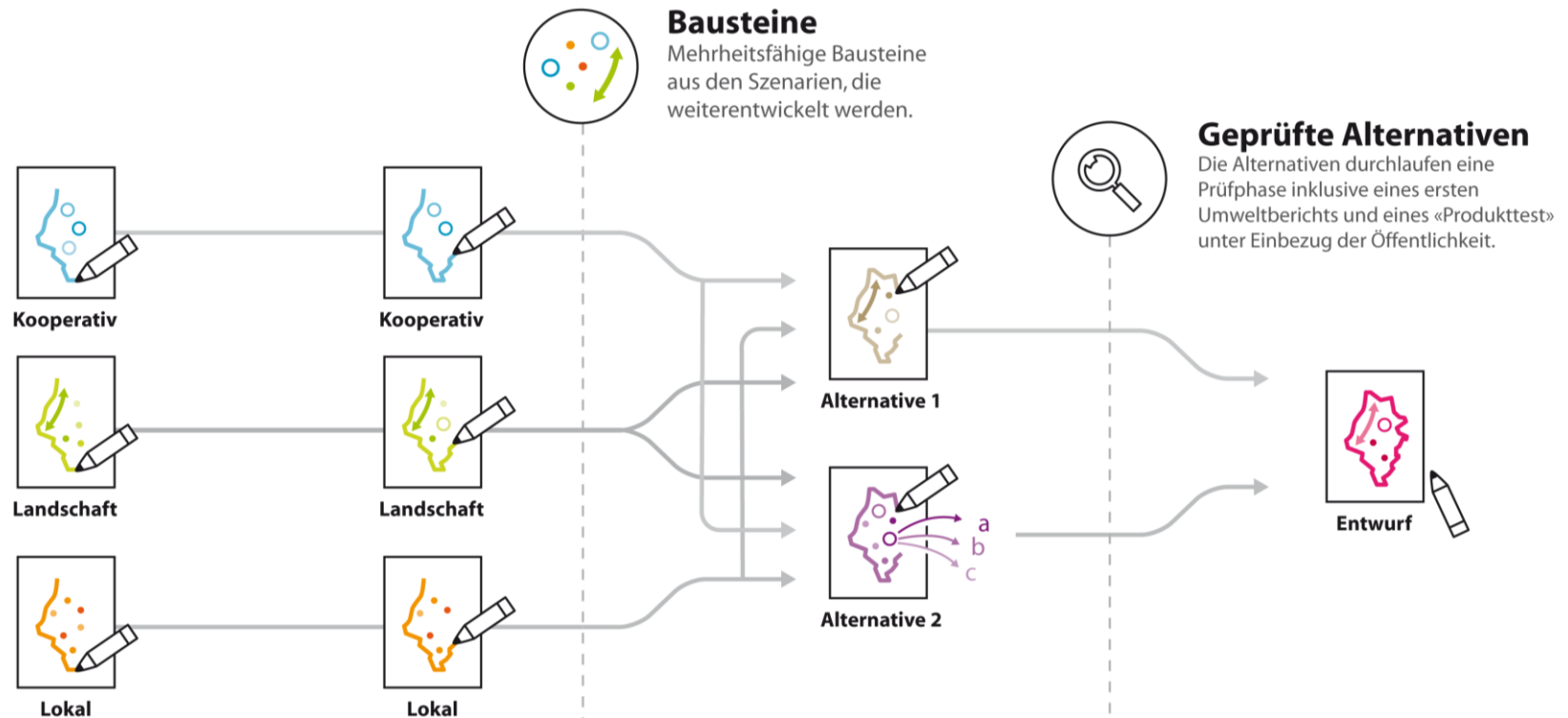


Our way to a solution



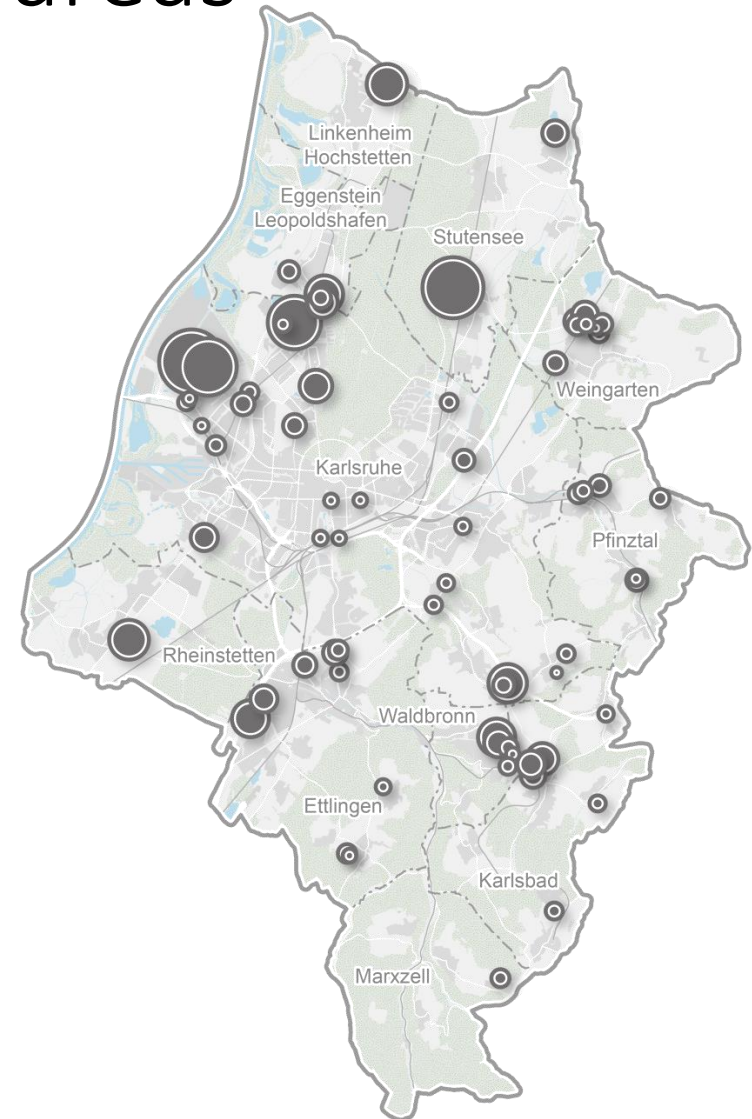
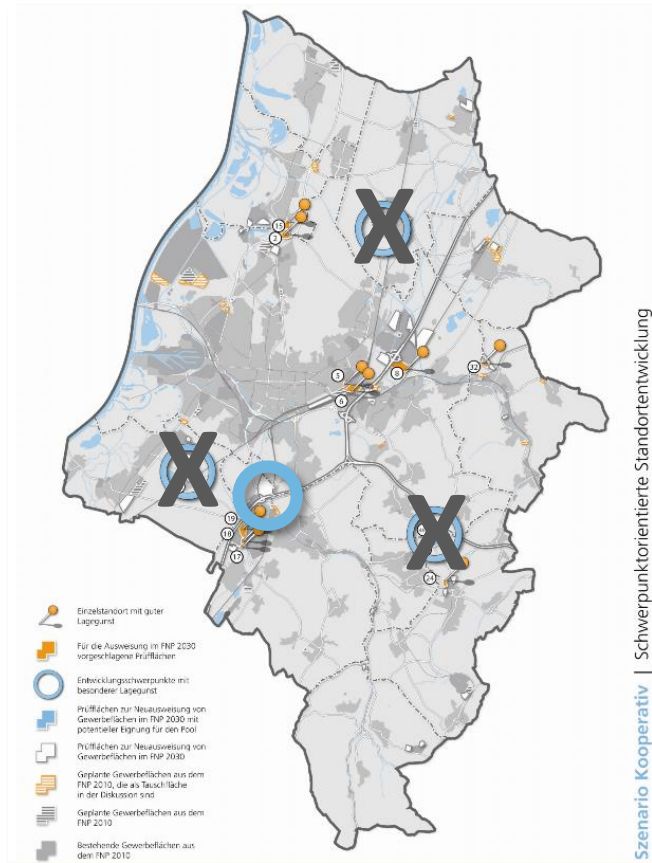
>> commercial areas
Working in scenarios

Our way to a solution



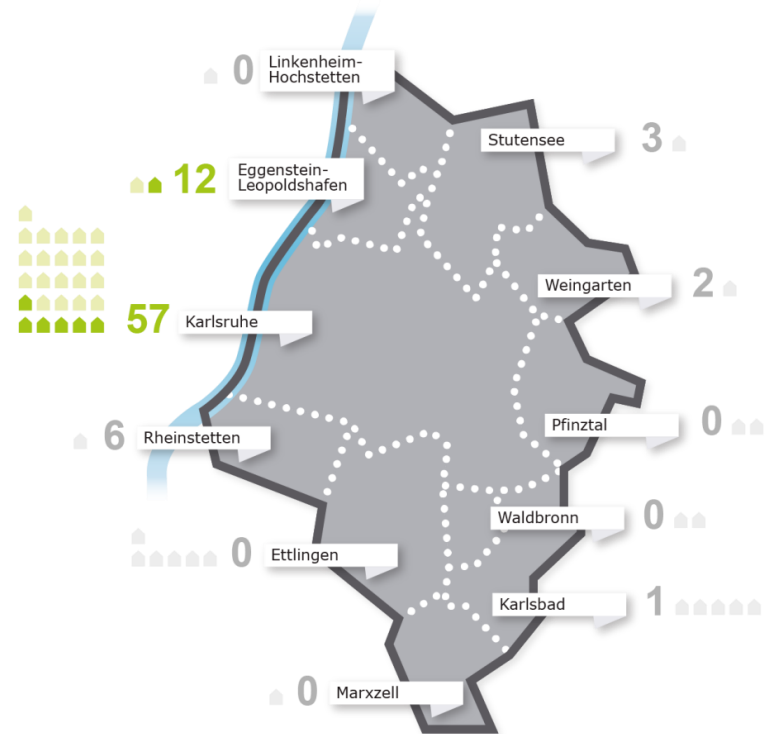
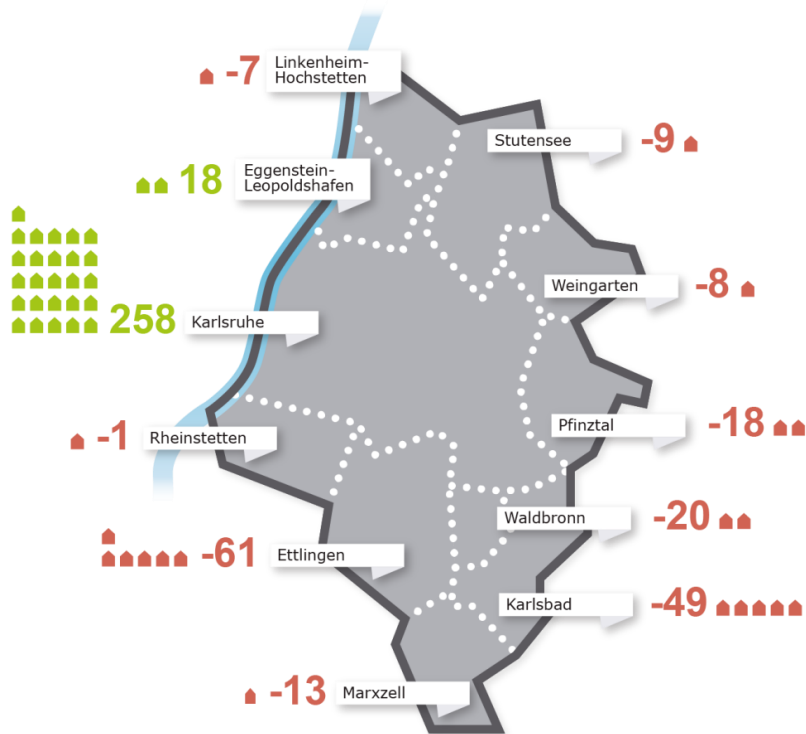
>> commercial areas
Working in scenarios

4. Output: commercial areas



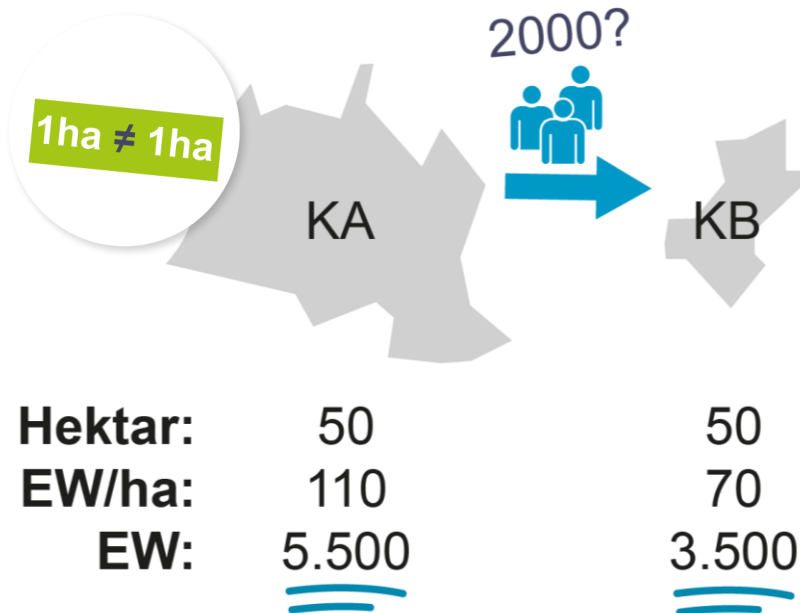
**>> differing suitabilities
intermunicipal areas**

Our way to a solution

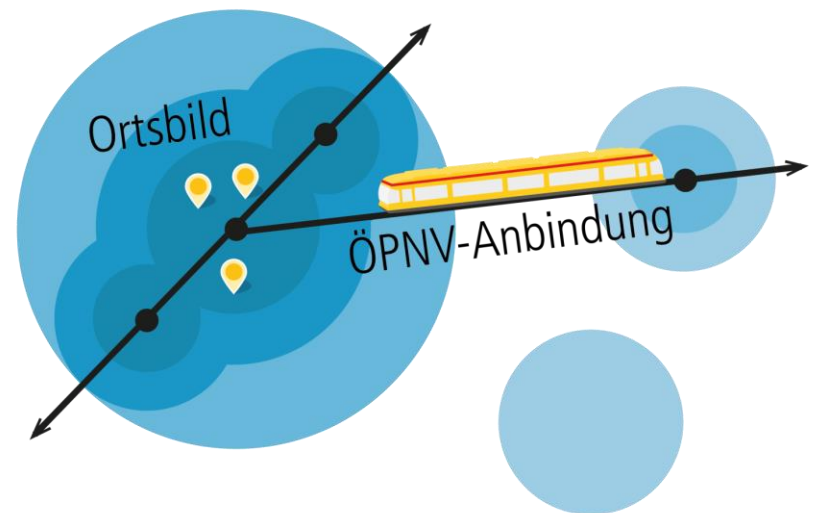


>> residential areas
common approach in providing areas

Our way to a solution



>> density and mobility
agreement on common
guidelines



4. Output: residential areas

BIS 2030 BENÖTIGT

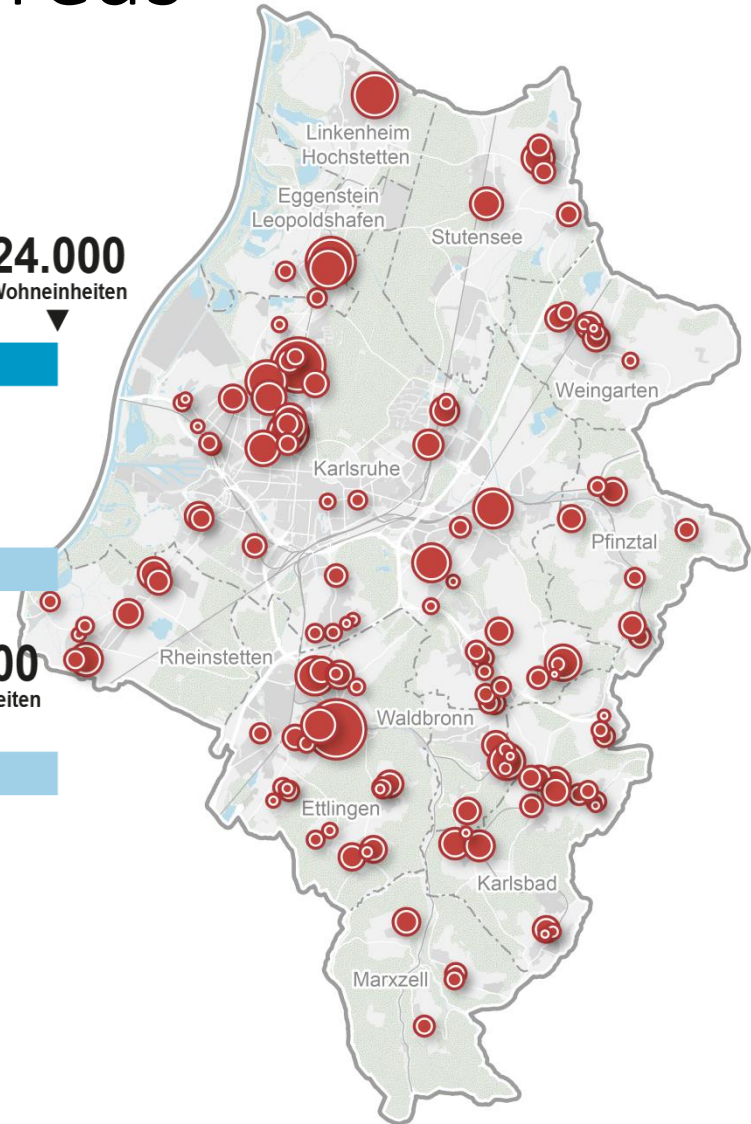
24.000
Wohneinheiten

IM FNP 2030 DARGESTELLT
ohne Erhöhung der Dichte
von Flächen aus dem FNP 2010

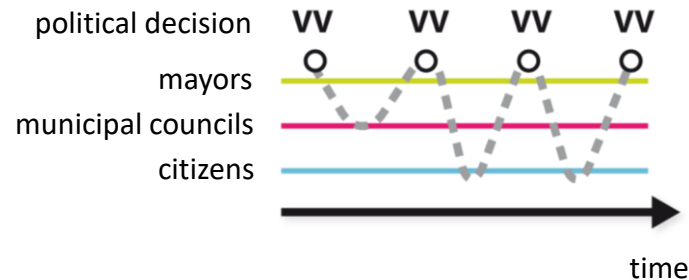
17.000
Wohneinheiten

IM FNP 2030 DARGESTELLT
mit Erhöhung der Dichte
von Flächen aus dem FNP 2010

20.000
Wohneinheiten



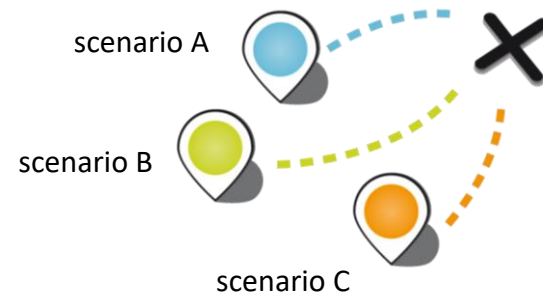
6. Transfer:



we'll meet later!
allow different approaches



who, when, how?
enough time for everyone



right? left? back!
not always straight ahead