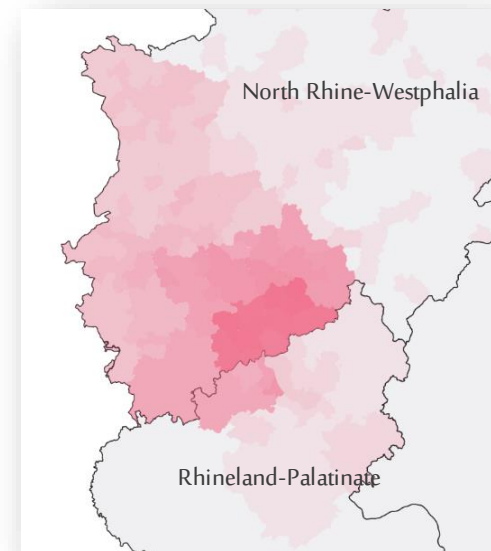


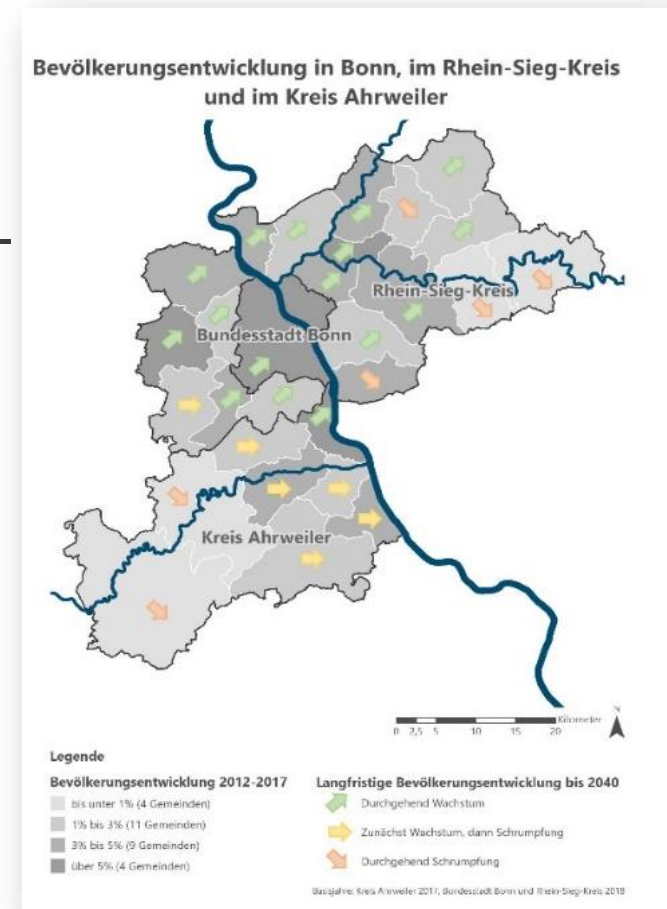
1. Institutional setting

- Support Measure for reducing disparities between cities and rural areas of the Federal Ministry of Education and Research
- Parallel processes of **growth and shrinkage** in the Region of Bonn/Rhein-Sieg/Ahrweiler:
 - Strong growing core - moderate shrinking of periphery
- Existing Multi-Level-Governance Arrangements and informal working groups
- Transdisciplinary approach: Affiliated partners from science and practice



2. Problem Statement

- Affordable Housing & housing shortage
- Positioning on a global market
- Sustainable settlement development – limit the use of land
- Disparities of benefits & burdens
- Regional concept for settlement development and system to balance benefits and burdens
- Develop binding structures for inter-municipal land management across the federal state borders



3. Approach

- Digitalisation and Regional Monitoring
- Web-GIS System for Municipalities
- Decision-making assistance: Assessment of potential development areas
 - Regional criteria on settlement development and green infrastructure
 - Uniform and indicator-based
 - Ranking of potential development areas
- At Draft: System to balance benefits and burdens



4. Expected Output

So far:

- Regional Monitoring & Assessment of potential development areas

Long-term:

- Improved management of growth and shrinkage
- Find the best suitable use for each development area
- Affordable housing and optimised use of land through higher densities
- Quantified sustainable location factors: provide public transport and local supply, prevent urban sprawl
- Benefit for every participating municipality

5. Lessons learnt

So far..:

- Requirement of inter-municipal cooperation vs. small-scale territorial thinking
- Sustainable development vs. effective feasibility/ acceptance (and political will)
- Good communication and strong visualisation are number one priority for evidenced-based and sustainable development oriented planning processes
- Dramatic composition of necessity: Encouraging engagement

6. Follow up

- Finding 'mechanisms' to balance benefits and burdens on a regional scale
- Idea of establishing a platform to exchange needs and offers
- Participation of local political stakeholders
- Perpetuation and Enhancement after funding – 'Exit strategy'
- Transferability to other regions