

BOURJ HAMMOUD CITY MAP




The sudden increase in population created challenges

- ▶ Since the outbreak of the civil war in Syria and particularly in 2013, Bourj Hammoud became the hub within Beirut, where most of the urban refugees are settling.
- ▶ The influx of refugees led to profound demographic changes and is influencing negatively the area causing not only economic problems but also social tensions among different groups especially youths.
- ▶ The municipality is over-challenged and under-equipped to accomplish the tasks assigned to it, a situation that has been worsened with the increasing challenges in the area.
- ▶ A huge rise in the demand for municipal public services and public works on the infrastructure.
- ▶ The root causes of tensions between the host community and the Syrian refugee community is the insufficient infrastructure and competition on the shrinking job market, due also to the economic crisis



SUGGESTED SOLUTIONS:

- ▶ **ENHANCING BUILDING CONDITION & SERVICES**
 - ▶ **FACILITATE CIRCULATION**
 - ▶ **IMPROVE WASTE WATER MANAGEMENT**
 - ▶ **ADDRESS ELECTRICITY MANAGEMENT**
 - ▶ **PROMOTE SOLID WASTE MANAGEMENT**
 - ▶ **PROVIDING MEANS TO THE MUNICIPALITY TO SERVE BETTER**
 - ▶ **IMPROVING AND EMBELLISHING THE “SOUKS”**
- 

ENHANCE BUILDING CONDITION & IMPROVE BUILDING CONNECTIONS TO INFRASTRUCTURE .



FACILITATE CIRCULATION



- ▶ Enhance the city's accessibility by addressing roads and sidewalks, and its connectivity to its surrounding.



IMPROVE WASTE WATER MANAGEMENT

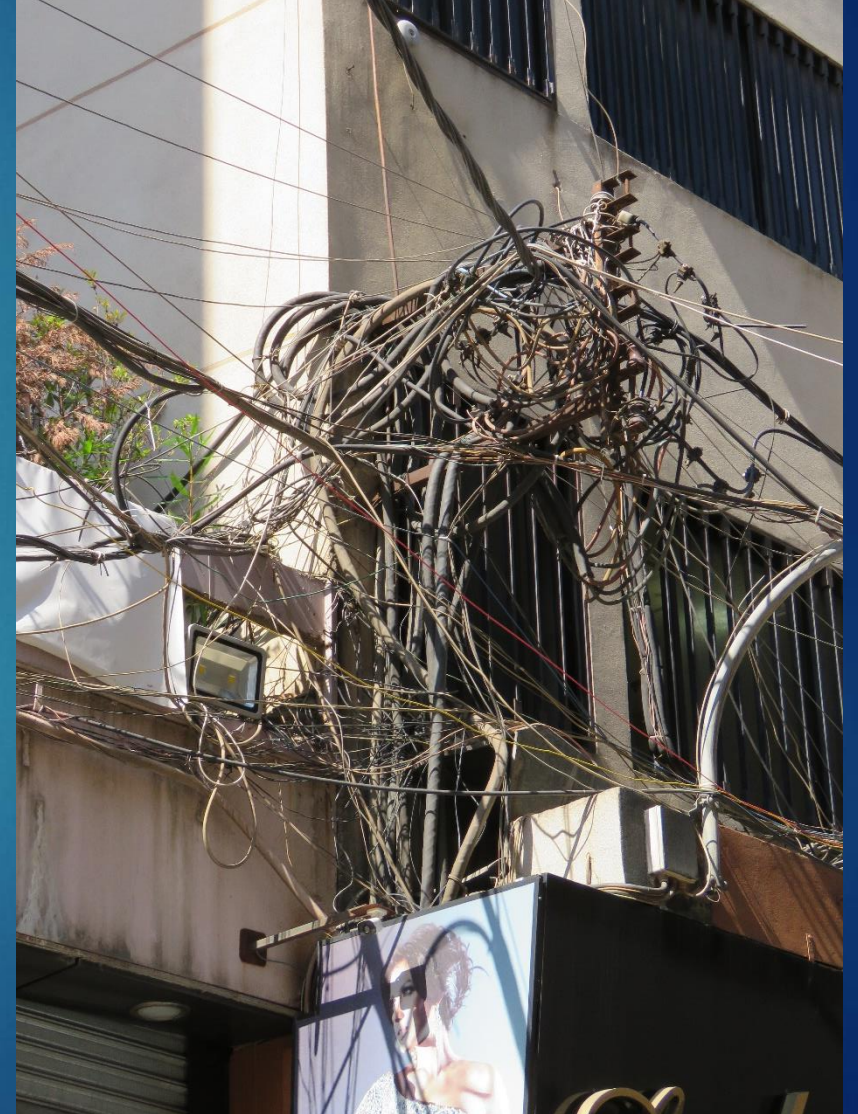
- ▶ Upgrade/ extend waste and storm water networks to mitigate flooding and enhance public health.
- ▶ Outcome : Adequate wastewater & storm water management will help improve public health & enhance street accessibility & economic activities.



ADDRESS ELECTRICITY MANAGEMENT



- ▶ Improve electricity networks & supply continuities for streets accessibility, safety & security.
- ▶ Outcome: Enhance safety & security accessibility & economic activities.



PROMOTE SOLID WASTE MANAGEMENT

- ▶ Meet solid waste collection needs, systematise its disposal and resolve informal dumping site.



PROVIDING MEANS TO THE MUNICIPALITY TO SERVE BETTER

To improve its services, better maintain the infrastructure.



IMPROVING AND EMBELLISHING THE “SOUKS”

- ▶ will improve the commercial activity, as well as reduce the social difficulties and tensions
- ▶ boost the economic activities for local beneficiaries and facilitate access to the street's services



The linkage to the Economy Development

