

Development and rehabilitation of a waste transfer station– jerash municipality



Local Development Unit

Eng.Wafa Hawamdeh

Main Challenge

- The existence of an empty site owned by the municipality was a waste transfer station close to a number of communities and near of an unregulated forest area
- The main challenge is the lack of safe spaces (green spaces) for children and families from the local community and Syrian refugees ready For all, including people with disabilities

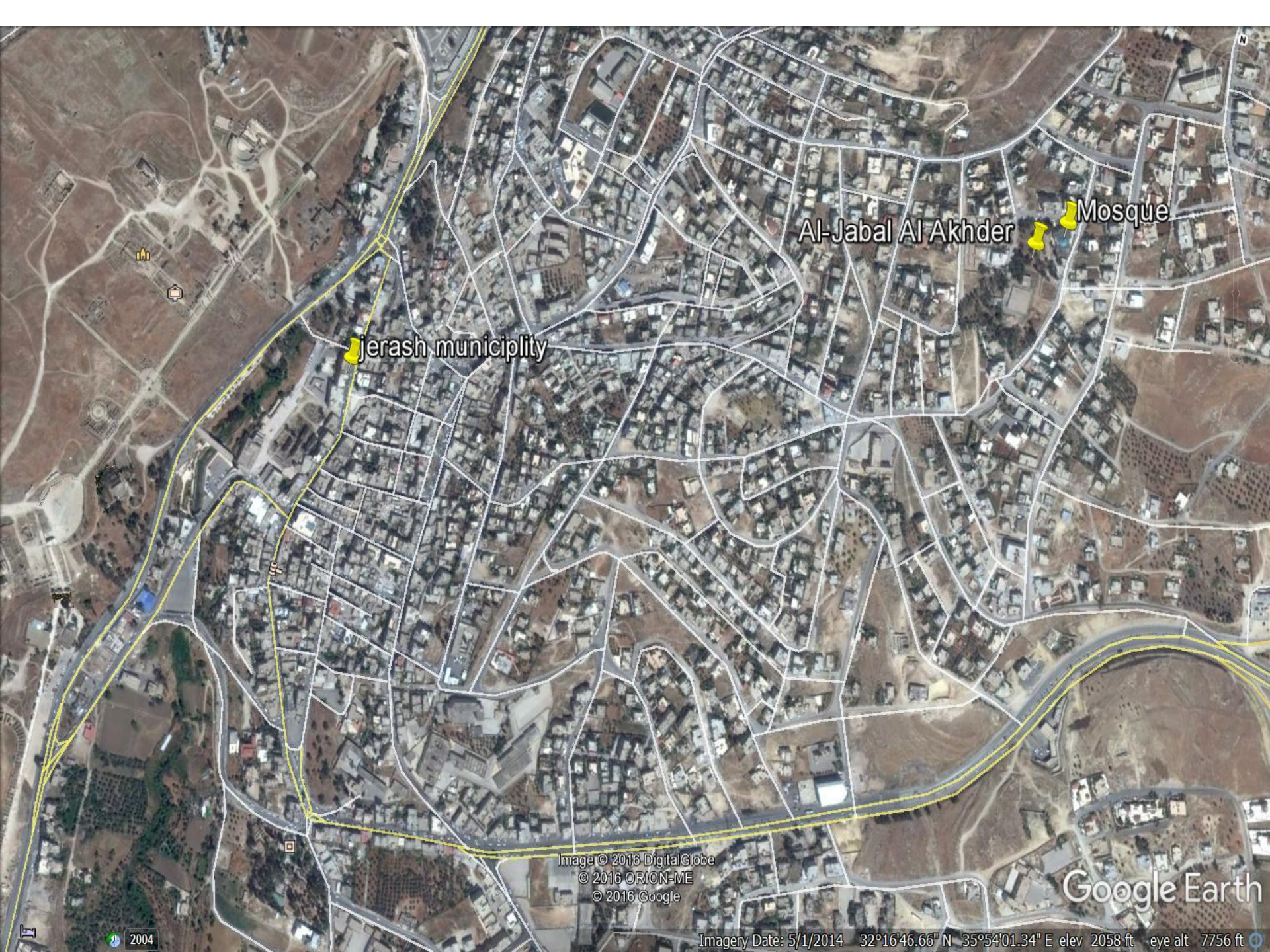
- There are environmental associations activists they don't have the opportunity and the right place to carry out environmental activities to serve the local community
- There are environmental associations and activists they don't have convenient and inspiring place to carry out environmental Recreational activities to engage the local community with refugee
- There are environmental associations activists they don't have the opportunity and the right place to carry out environmental activities to serve the local community
- There are environmental associations and activists they don't have convenient and inspiring place to carry out environmental Recreational activities to engage the local community with refugee

The main goal

- Rehabilitation and development of the site to be an environmental model and entertainment serves the local community and can be generalized to the rest of the municipal areas and neighboring municipalities
- Rehabilitation and development of the site to be an environmental model and entertainment serves the local community and Can be circulated to other sites of the municipal areas and neighboring municipalities
- create safe spaces and spaces for children and families from the local community whether they are Jordanian or Syrian refugees.

- Create safe open public spaces with a facilities for the local community including Syrian refugees Available to all (children, families, youth, disabilities, Ngos ...act
- Providing services to local communities and taking into account the need to preserve the environment and connect with the community and the environment
- Providing services to all segments of local community and taking into account the need to preserve the environment and promoting biodiversity and deepening interaction between the environment and society

- Needs were identified through the community where they participated in the meetings:
- 1. Housing neighborhoods near the project site
- 2. Syrian refugees
- 3. Municipality
- 4. Environmental Development and Coalition Societies For forests (Ngos + Activists)



jerash municipality

Al-Jabal Al Akhder

Mosque

Image © 2016 DigitalGlobe
© 2016 ORION-ME
© 2016 Google

Google Earth

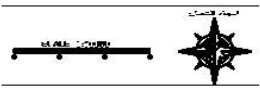
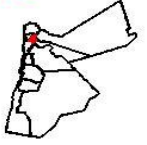
2004

Imagery Date: 5/1/2014 32°16'46.66" N 35°54'01.34" E elev 2058 ft eye alt 7756 ft



المملكة الأردنية الهاشمية
وزارة الشؤون البلدية
دائرة التخطيط العمراني والقرى

خارطة البلديات
محافظة جرش



الدول العام

حدود منطقة بلدية
حد محافظة

بلدية جرش الكبرى
بلدية التميم
بلدية المعراض
بلدية زرما
بلدية باب عمان

البيانات جغرافية في كادastre والبيانات
البيانات

محافظة البلقاء

محافظة الزرقاء

محافظة المفرق

محافظة اربد

محافظة عجلون

بلدية التميم

بلدية جرش الكبرى

بلدية المعراض

بلدية زرما

بلدية باب عمان



© 2013 ORION-ME

Image © 2014 CNES / Astrium

Imagery Date: 8/9/2013 32°16'44.86" N 35°53'35.96" E elev 1850 ft eye alt 3230 ft

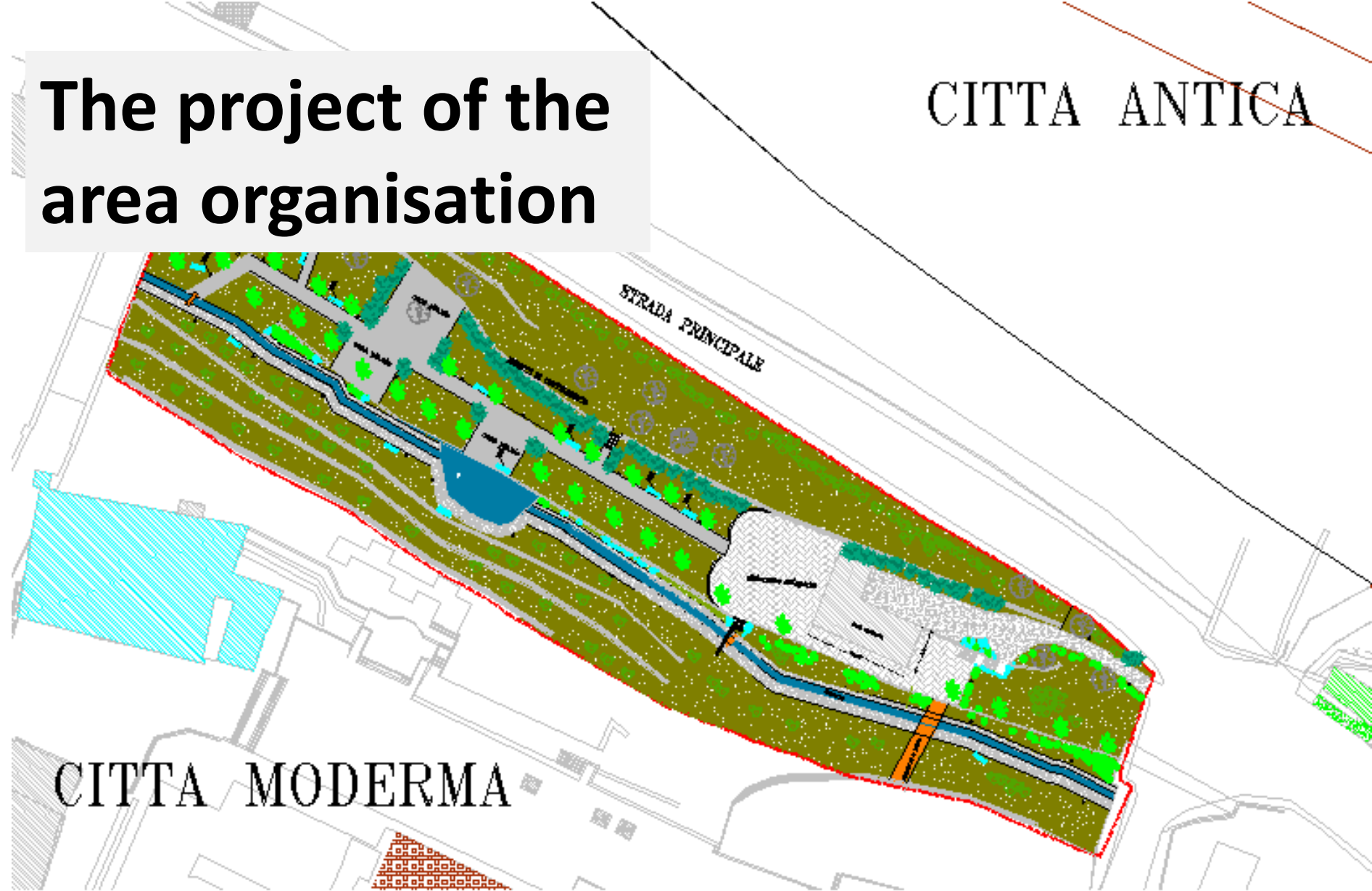




The project of the area organisation

CITTA ANTICA

CITTA MODERNA



- The municipality and our partners needs to benefit from similar experiences in order to develop solutions in this area

Thank you