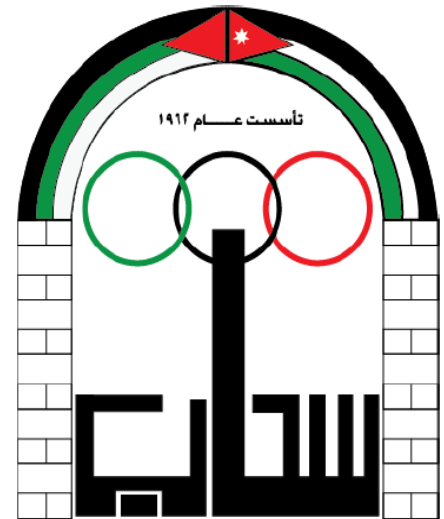
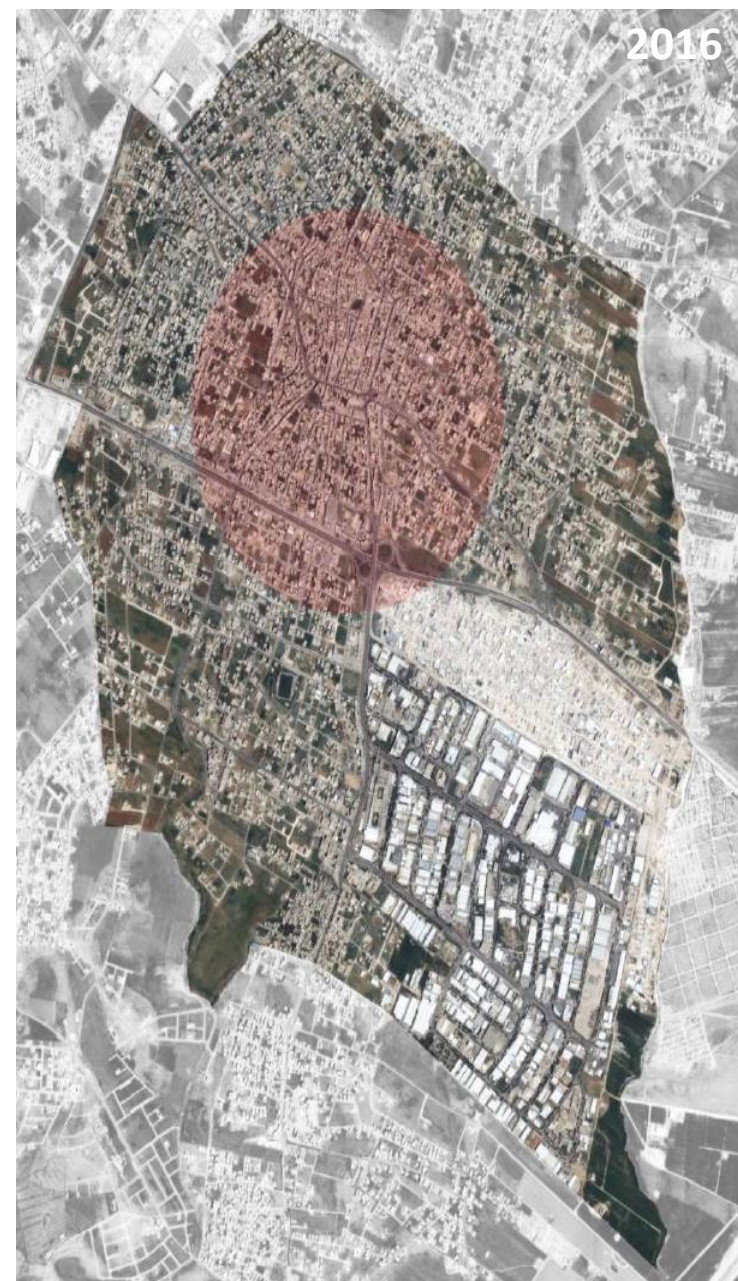
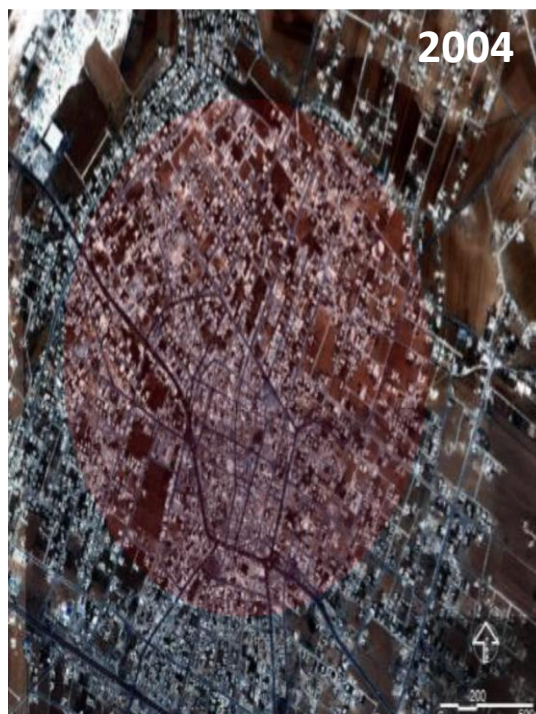
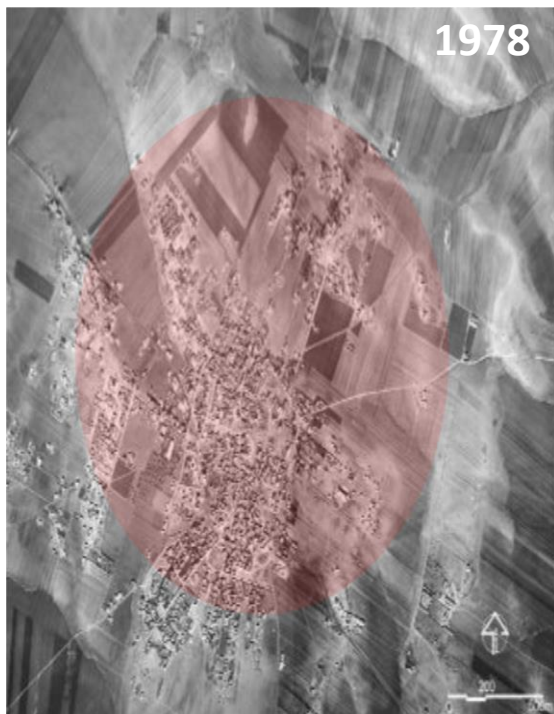


Integrated water & Sanitation Management Plan in Sahab Municipality

The nexus Approach, Green Area

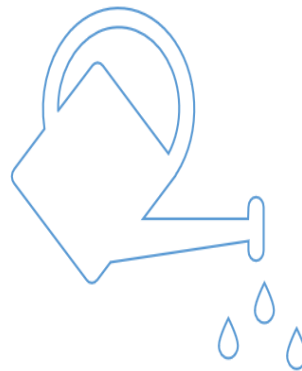
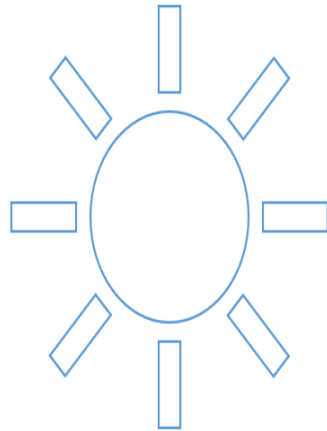
Sahab Municipality, Jordan
Haneen Hassouneh,





Sahab covers an area of 1370 hectares, and houses a population of 169,430 inhabitants of whom 92,000 are Jordanians, 40,000 are Syrians and the remainder are labour migrants and expatriate workers from South-East Asia and Egypt. The municipality accommodates one of the poorest communities in Jordan with a poverty rate reaching up to 54%.

- The nexus approach recognises that food, water, energy and climate are inextricably linked, and that actions related to any one area must consider the impacts on at least one (if not all) of the other areas.
- This is the current approach the municipality is trying to achieve, with the help of local NGOs.
- And it is developing its sustainable strategy according to that.

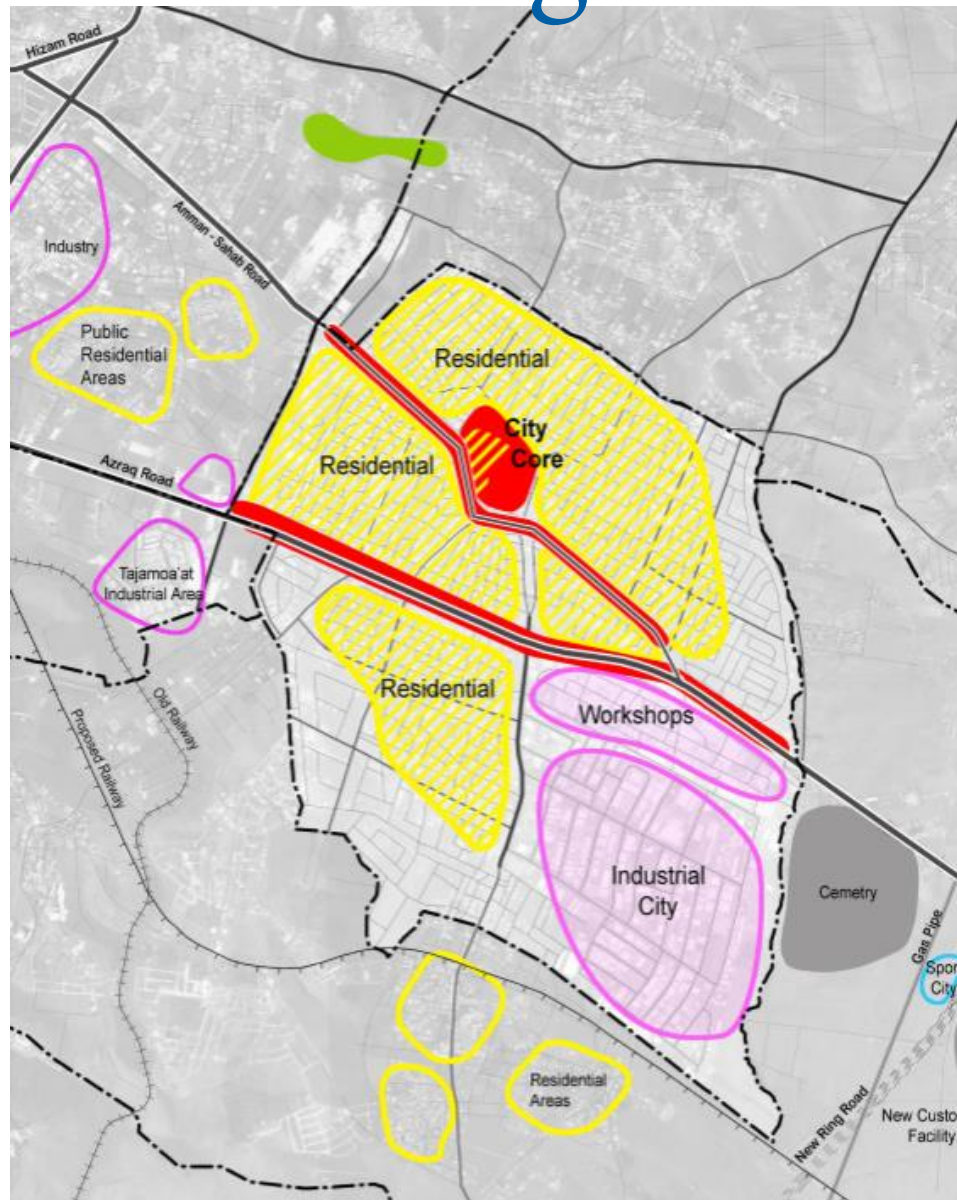


The municipality's current mandate and strategic plan focuses on adopting a food energy water NEXUS approach for development.

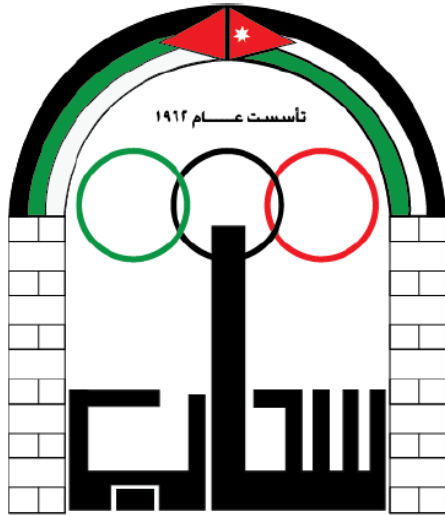
specific challenge in the context of Urban District Development?

- Lack of urban environment fabric and infrastructure management, including roads, sidewalks, walkways, water supply, and sanitation
- Crowded streets and insufficient public transportation system
- Poor pedestrian connections to new bus station
- No recreational areas, playgrounds, parks or open public spaces except the bus station
- Pedestrian sidewalks vary in condition or do not exist
- Core industrial area of greater Amman, **housing two major industrial estates and numerous private industrial and commercial establishments**

Existing Structural Pattern



actors/stakeholders are involved?



Grey Water Treatment + Reuse

Grey water reuse from the main big mosque for irrigation of urban garden and open public space:

This initiative can be mastered by one of the following entities or a combination (through MOUs) but the ownership of the project will be for the Municipality:

- local women CBOs (business model, where they eventually sell the planted produce in shops)
- Sahab Municipality/ development unit: Facilitation and Supervision
- MENARET Project Management Unit (PMU): Facilitation and Supervision

Capacity Development Needs:

- Herbal and medicinal plant agriculture (planting and production)
 - Food safety and quality
 - Food processing
 - Packaging and marketing
 - Grey water system operation and maintenance
-
- This includes defining the proper technology, developing a sustainable business model to benefit the surrounding community, potential of upscaling the implementation, developing a good practice case study that can be replicated.



Before

After




This image is a concept vision of the intervention at the mosque:
It includes defining the proper technology for grey water treatment, developing a sustainable business model to benefit the surrounding community, studying the potential of upscaling the implementation, developing a good practice case study that can be replicated.

Sahab Now is member in the Covenant of Mayor

- **Covenant of Mayors**
- Sustainable Energy Action Plan
- We have to reduce the amount of Co2 14% to 2020 we finish with 4 activities out of 15



 **My Covenant status**

Signatory Profile
sahab

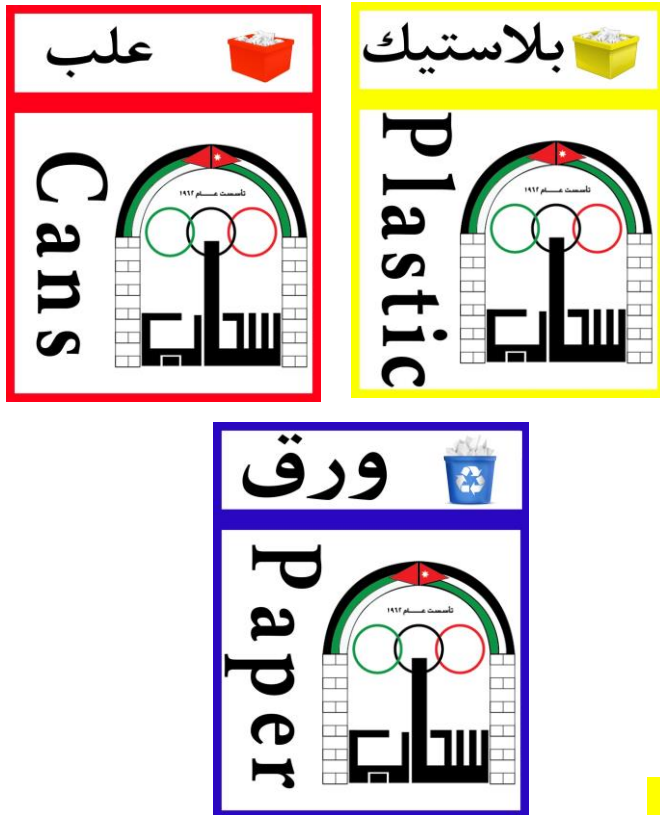
Date of adhesion: **6 June 2015**
Submission deadline: **6 March 2017**
~~SEAP submitted on: 3 February 2017~~
Covenant status: **Action Plan submitted**

Signature

Action Plan submitted

Results monitored

Distribution of new containers to Sahab schools and public places



We have to manage this in all schools

100,000 trees will be planted in Sahab

- 1000 trees already planted



PROPOSED Initiatives & Ideas

Mosque" Plaza – Including Shopping Mall and Car Park (mixed used project where Syrian can sell there handicraft products)

Central Mosque Before



Central Mosque Civic Plaza After

