



Integrated District Planning in Irbid City

By

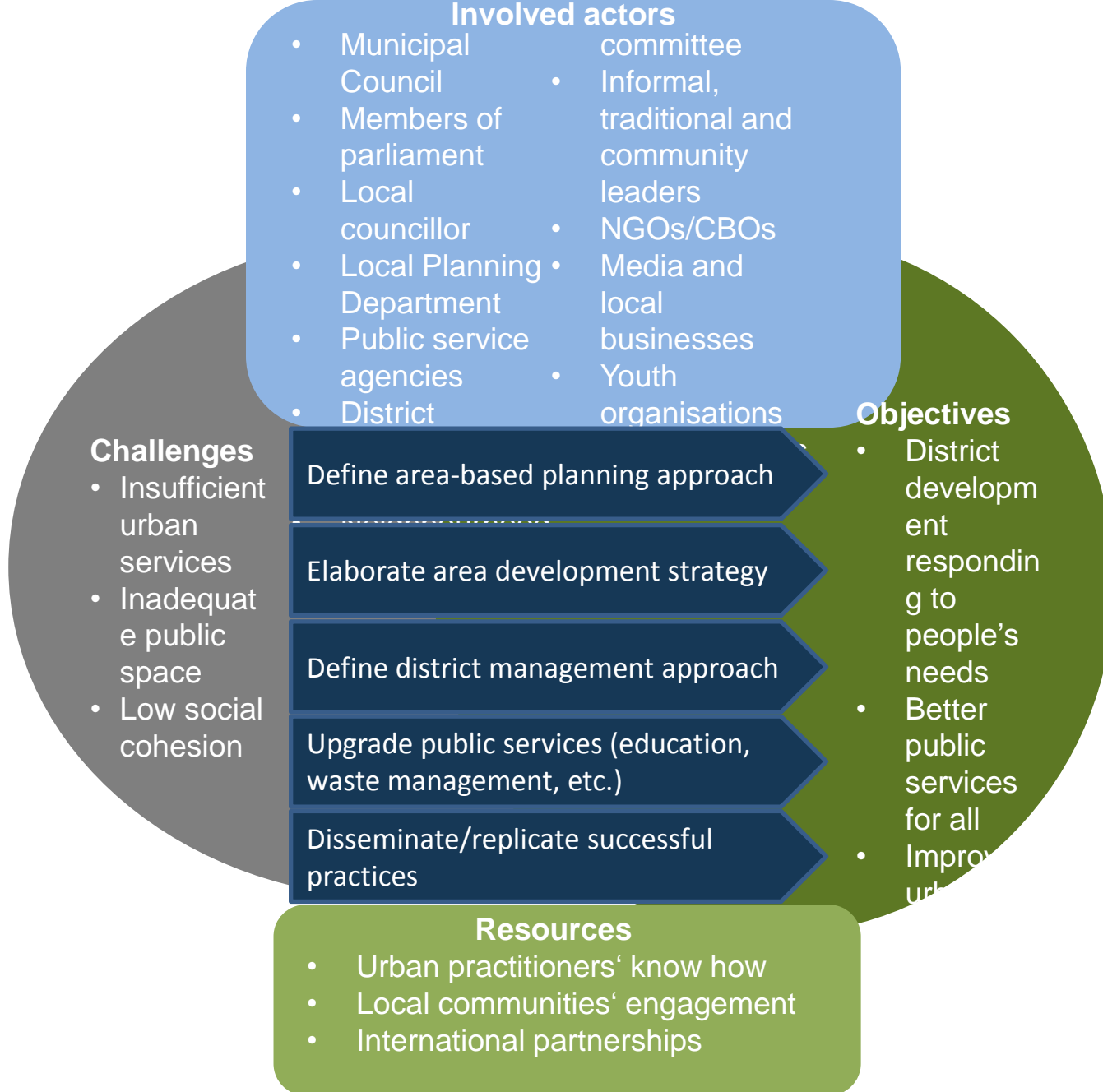
**Ziad Al-Ghzawi
Walid Bani Hani
Nafez Shatat**

**Greater Irbid Municipality
and
Jordan University of Science & Technology**

1. Project idea:

To select a certain undeveloped or partially-developed district to forge out a model district in integrated/holistic urban planning

Project A) Planning: Integrated Urban Development Planning (Irbid)



2. The Challenge?

- Lack of integration in urban planning
- Weak coordination among different actors
- Infrastructure issues (Water and Sanitation, Telecom, etc...)
- Pollution issues
- Pesticides
- Solid waste management
- Stray (wild) dogs
- Reptiles and poisonous snakes
- Lack of recreational areas
- Water supply issues
- Sanitation issues
- Road maintenance issues
- Poisonous ornamental trees and bushes
- Safety
- Water courses
- etc...
- We've got some PICTURES







Involved actors and stakeholders

- Municipality of Irbid
- Water authority of Jordan
- Ministry of municipal and rural affairs
- Scientific and university community
- NGOs
- Public at large

OBSTACLES?

1. Coordinated planning
2. Cooperation of responsible actors
3. Public awareness
4. Funding

6. Concrete Actions

1. Setup already existing between Municipality and JUST university
2. Appreciation of Municipality and willingness to add to GIZ/CC funding to make the project idea a reality

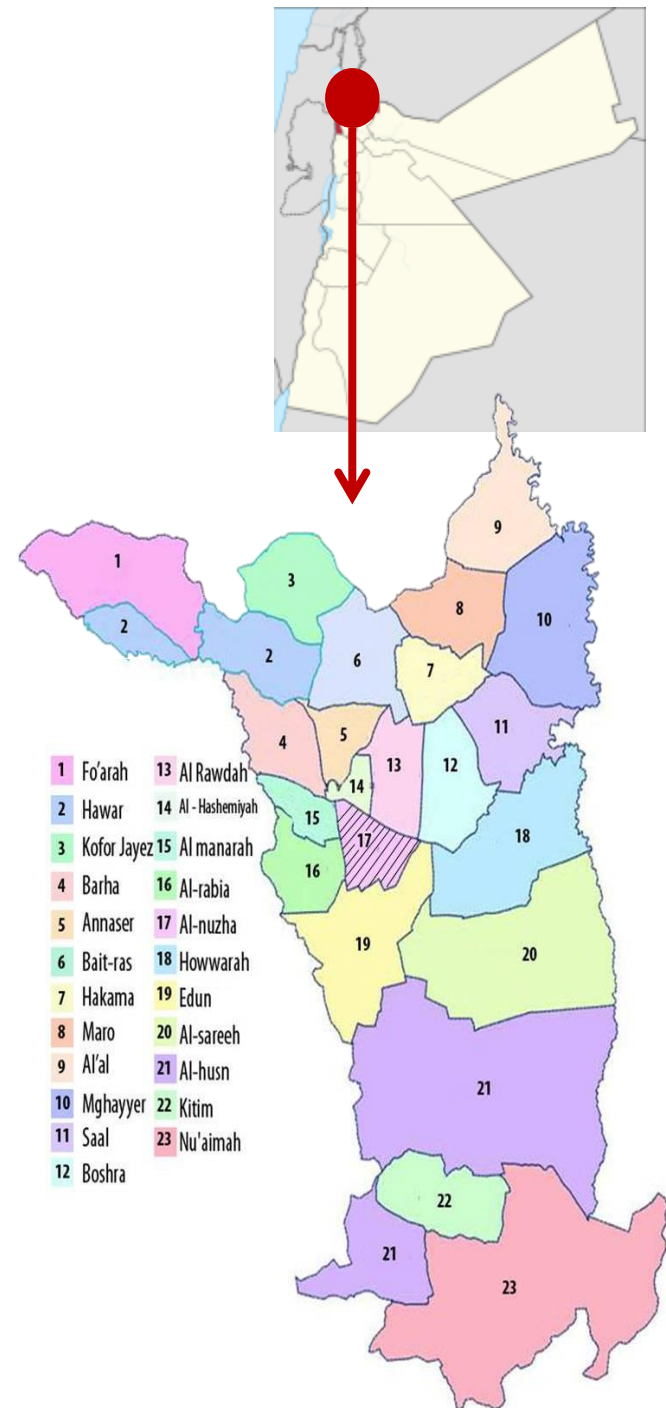
General information

Greater Irbid Municipality (GIM)

GIM is composed
of 23 Districts

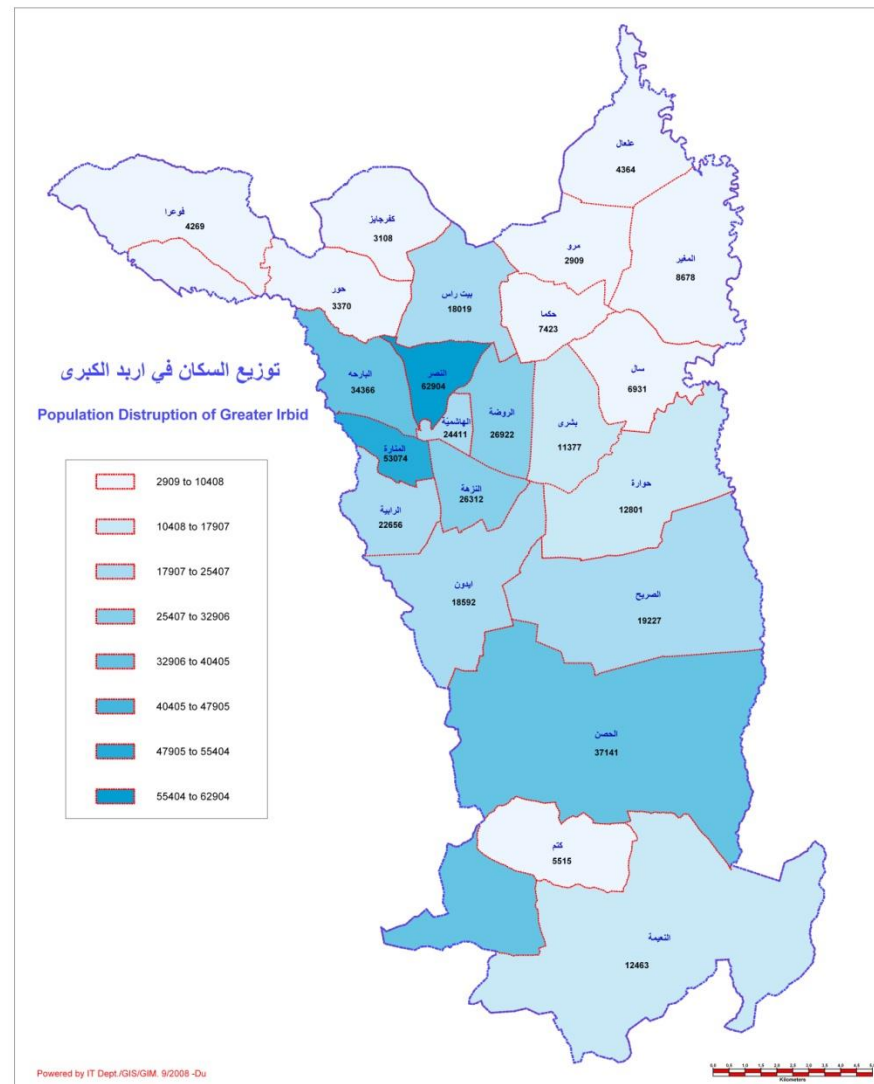
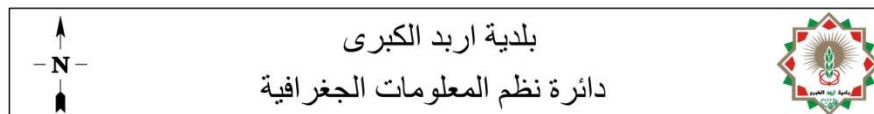
The total area of
GIM is about 410
km²

Population:
~ 600,000



area M2	pop2009	pop2004	المنطقة	District
6595248	25979	22656	الرايبة	Rabeiah
5446937	30172	26312	النزهة	Nuzhah
3577998	60857	53074	المنارة	Manarah
6915305	30870	26922	الروضة	Rawdah
1892127	27991	24411	الهاشمية	Hashemiyyeh
7867166	39405	34366	البارحة	Barhah
4585560	72127	62904	النصر	Annsar
15952193	21809	18586	ايدون	Aidoon
11356292	5002	4362	علعال	Al'al
10271683	20666	18023	بيت راس	Bait Ras
8859986	13045	11377	بشرى	Boshra
16040791	4914	4286	فوعرا	Fo'arah
6539791	8511	7423	حكما	Hakama
13020451	3863	2485	حور	Hawar
58519131	42859	20763	الحصن	Hoson
18008265	14623	12753	حوارة	Howwarah
9919638	6320	5512	كتم	Ketem
9281060	3574	3117	كفر جاييز	Kofor Jayez
8903718	3349	2921	مرو	Maro
16983114	9946	8674	المغير	Mghayyer
45483484	14265	12441	النعيمة	No'ayymeh
28313999	22027	19227	الصريح	Sarieh
9590174	7961	6943	سال	Saal

في

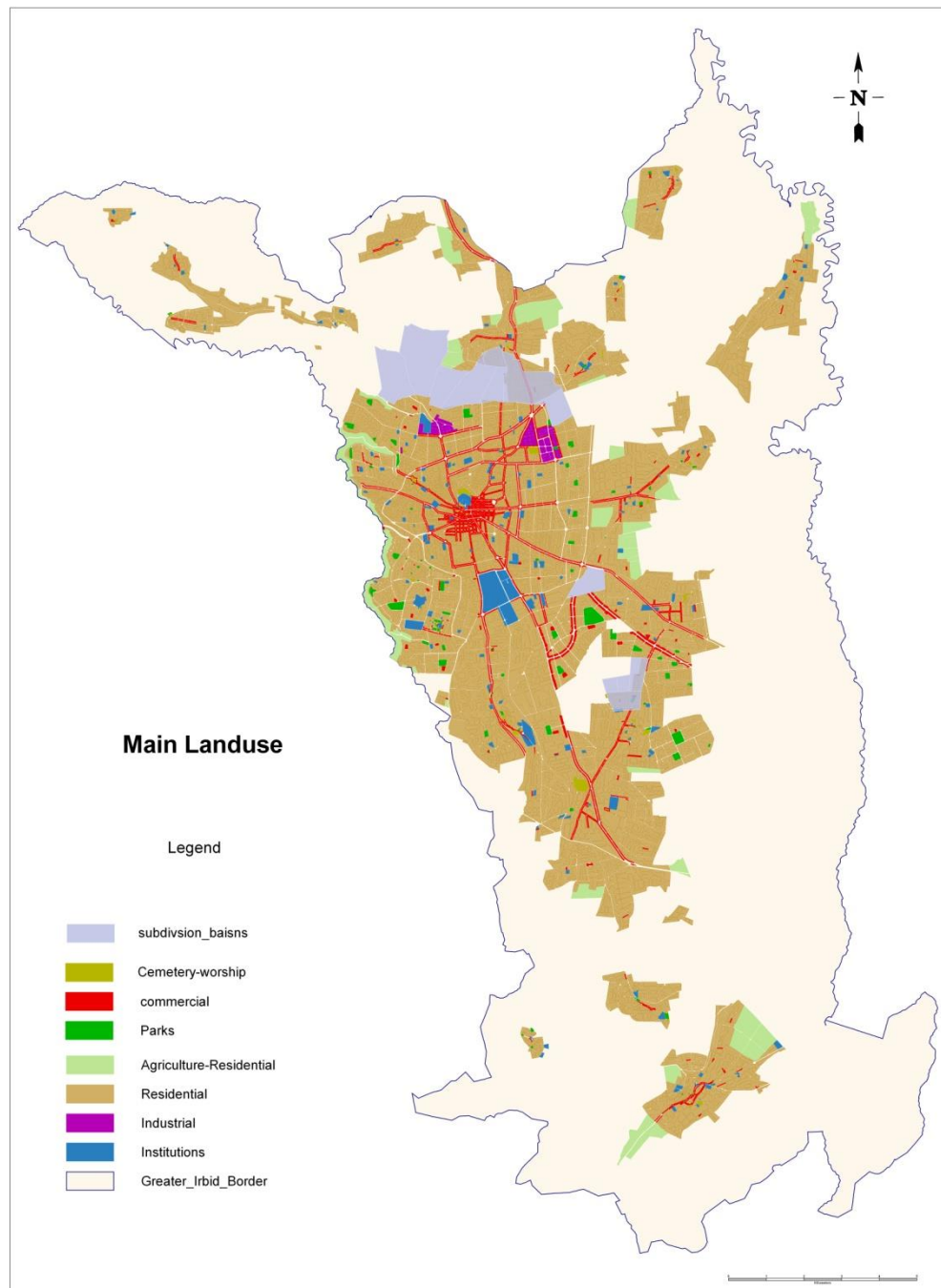




Main land-use

Residential	73759.01	67%
Agricultural_Residential	6863.95	6%
Commercial	3538.72	3%
Parks	1046.60	1%
Institutions	2965.57	3%
Industrial	3538.72	1%
Streets	20465.89	19%

109665.0737
donums





SOLUTION

CREATE A RECREATIONAL SPACE

