

Municipal know-how
for host communities
in the Middle East
PROGRAMME

Connective Cities and the Middle East programme

Connective Cities Project Workshop

Krefeld, 4 September 2018

Wencke Müller and Alexander
Wagner

An initiative of

**ENGAGEMENT
GLOBAL**
Service für Entwicklungsinitiativen



On behalf of



Federal Ministry
for Economic Cooperation
and Development

with its

SERVICE AGENCY
COMMUNITIES IN ONE WORLD

in cooperation with

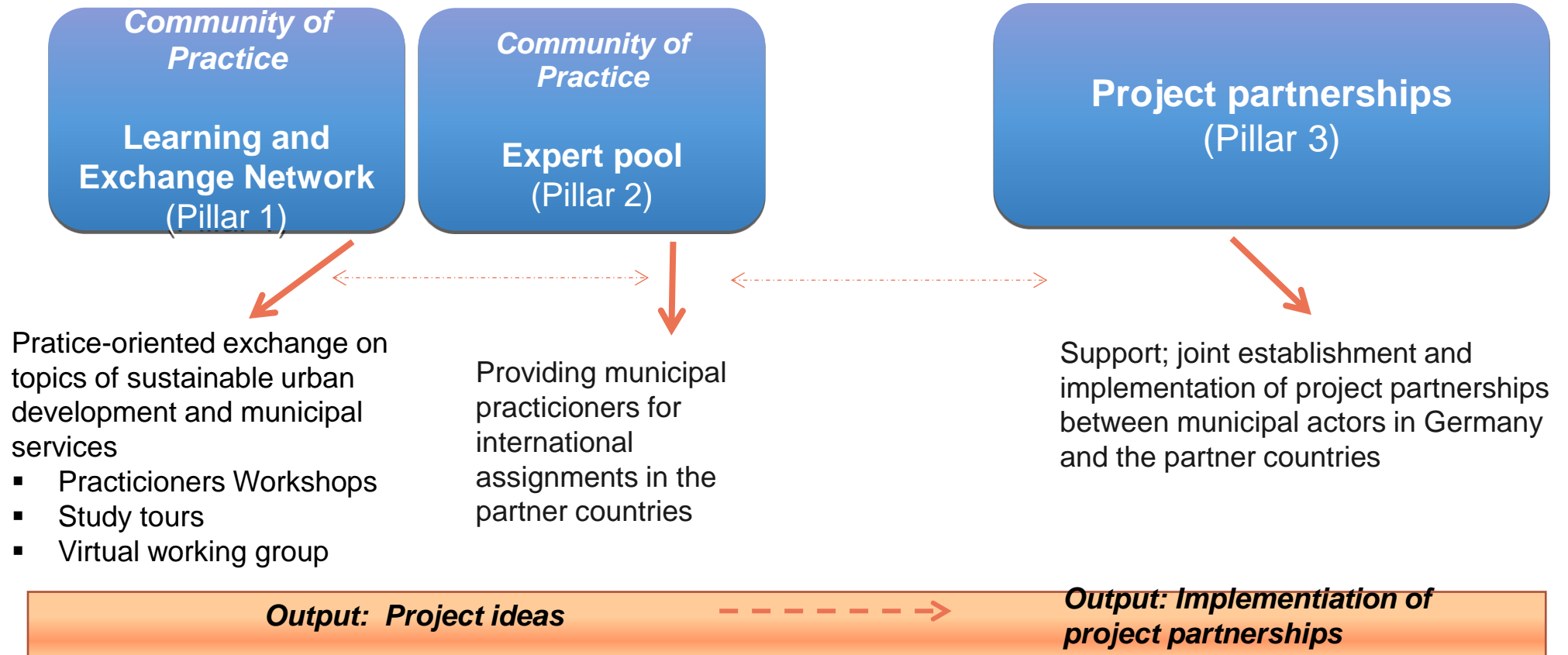


The programme

- **Background:** Civil war in Syria; burden and challenges of host communities in Lebanon, Jordan, Turkey
- **Objective:** To promote cooperative partnerships between the host communities in Jordan, Lebanon and Turkey on the one hand and German municipalities on the other. The focus is on professional dialogue and constructive cooperation b7w the partner municipalites for the joint development of local solutions.
- Programme has been launched by the BMZ in 2016; pilot phase until end of 2018. Second phase 2019-2021

Municipal know-how
for host communities
in the Middle East
PROGRAMME

Municipalities / Municipal enterprises



Pillar 1 and 2: Community of practice - Expert exchange



Objectives



To facilitate **networking** between urban actors from politics, administration, business, science and civil society

To support a systematic and application-oriented **exchange** of experience on good practices and through peer-to-peer-consultations



To support the development of innovative ideas for **urban projects**

Methodological approach



- **Presentation of Good Practices**
- **Peer-to-Peer Advising on concrete challenges**
- **Development of ideas for urban development projects**
- **Action planning and advice on project financing**
- **Implementation by the partnering cities**


Previous activities



- Dialogue event in Amman on **Towards resilient and livable urban district development**, November 2017
- Dialogue event in Amman on **Developing Strategies for Resilient and Liveable Urban District Development**, April 2018

Pillar 1 and 2: Community of practice - Virtual exchange





>> global campus 21®

HomeMy CoursesMy CommunitiesMy MessagesMy Profile?G+

> Home

Networking

Documents


Members

Events

Integrated Solid Waste Management


Welcome to your working group!

In succession to the Connective Cities Practitioners' Workshop on Integrated Solid Waste Management (14-17 April 2015 in Kinondoni, Tanzania) this Working Group aims at supporting you to continue working on your formulated projects and action plans.




Integrated Solid Waste Management

News



Introduction to the functions of the Community of Practice ...
The Working Group offers a number of interactive functions: Wall – Overview on recent activities in ...
14.08.2016



Introduction to Working Group Functions
The Working Group offers a number of interactive functions: Wall – Overview on recent activities in ...
25.09.2016

More...

Links

[UNEP - International Environmental ...](#)

[ISWA](#)

[CReED - Center for Research, Education ...](#)

[German RETech Partnership](#)

[SWEEP-net](#)

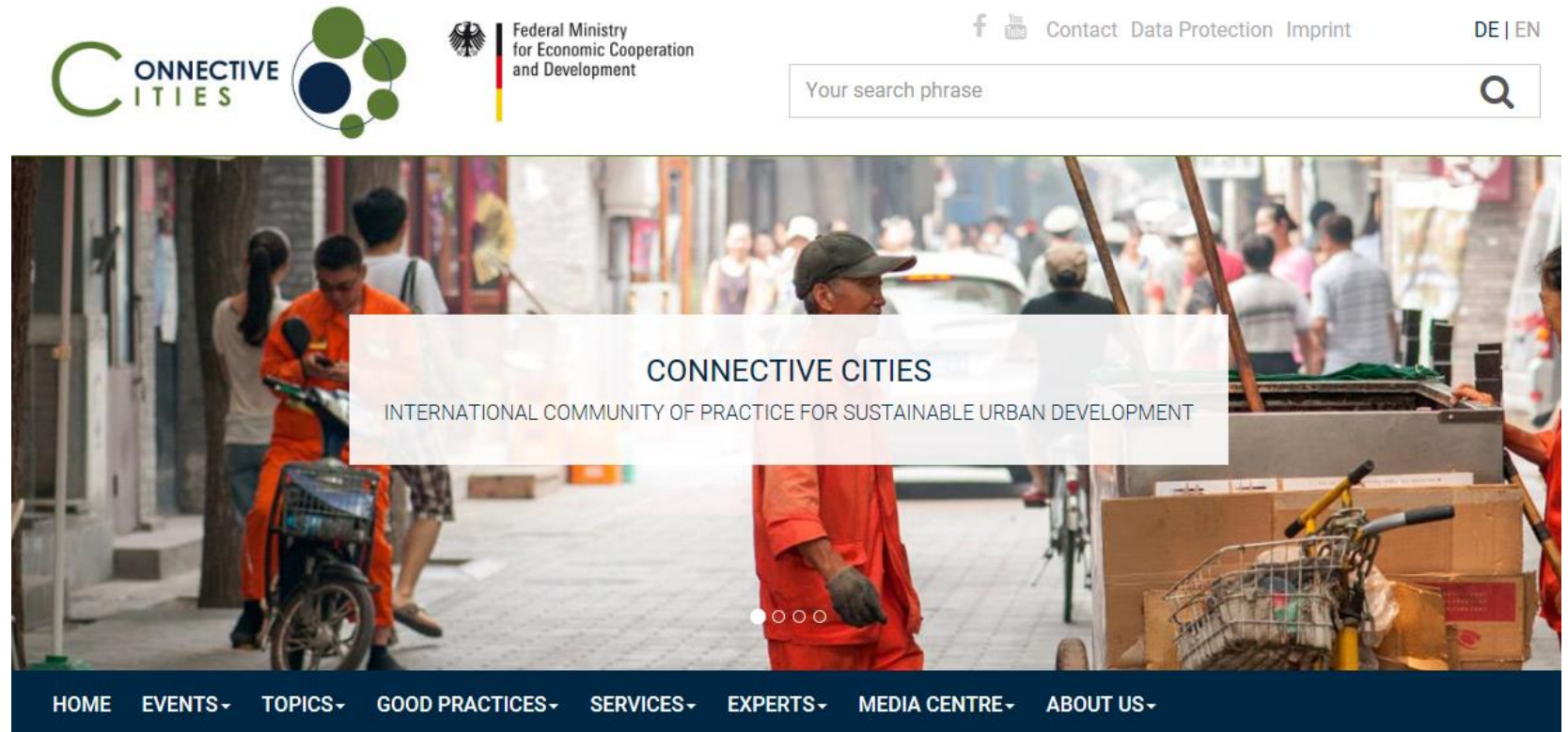
[Global Partnership on Waste Management ...](#)

[Municipal Solid Waste Knowledge Pla...](#)

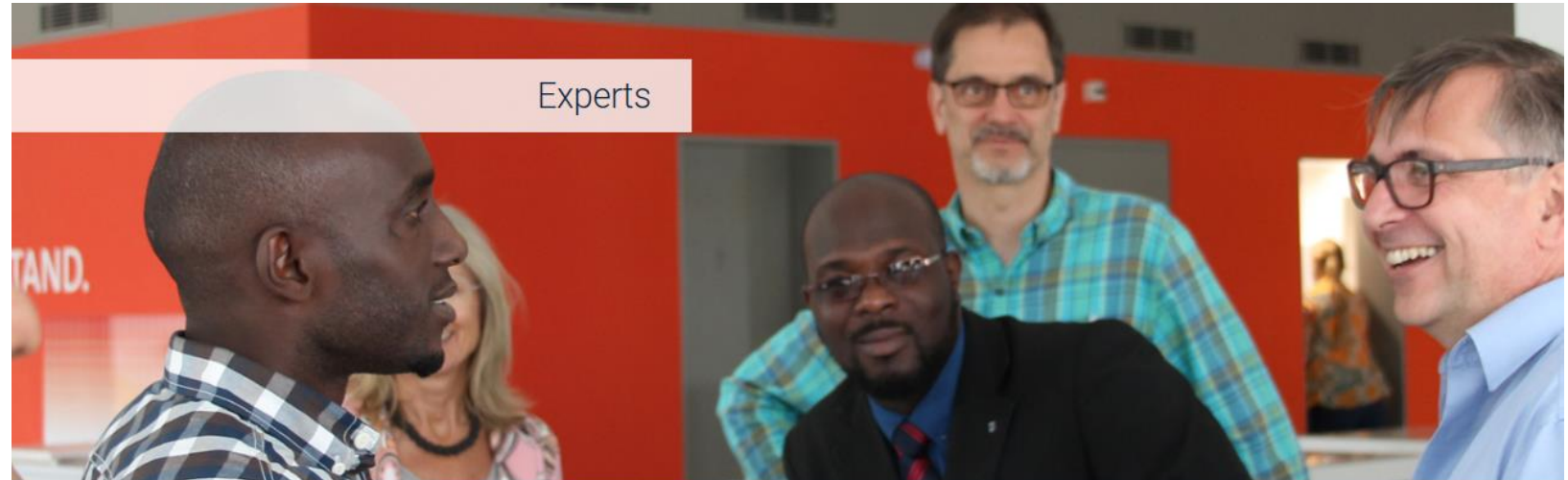
[Connective Cities Website](#)

More...

Pillar 1 and 2: Community of practice - Webportal



Pillar 1 and 2: Community of practice - Expert pool



Our experts



Find municipal experts for your projects!

Expertise wanted!



International municipal experts wanted!

Expert registration



Register yourself as a municipal expert of sustainable urban development!

Experts experiences



Experts report about their missions.

Pillar 1 and 2: Community of practice

- Good practices



Integrated Financial
Management for Wastewater
Disposal

09/04/2018

It is the oldest public water supply
utility in continental Europe: today's



A City in Digital Transformation
– How Bremen is Reclaiming
Public Space through Car
Sharing

28/03/2018

Everyone who travels by car shares



SafetiPin Mapping Tool in
Bogotá

18/01/2018

The organization ALS SafetiPin
created an application for smart
cell phones that allows

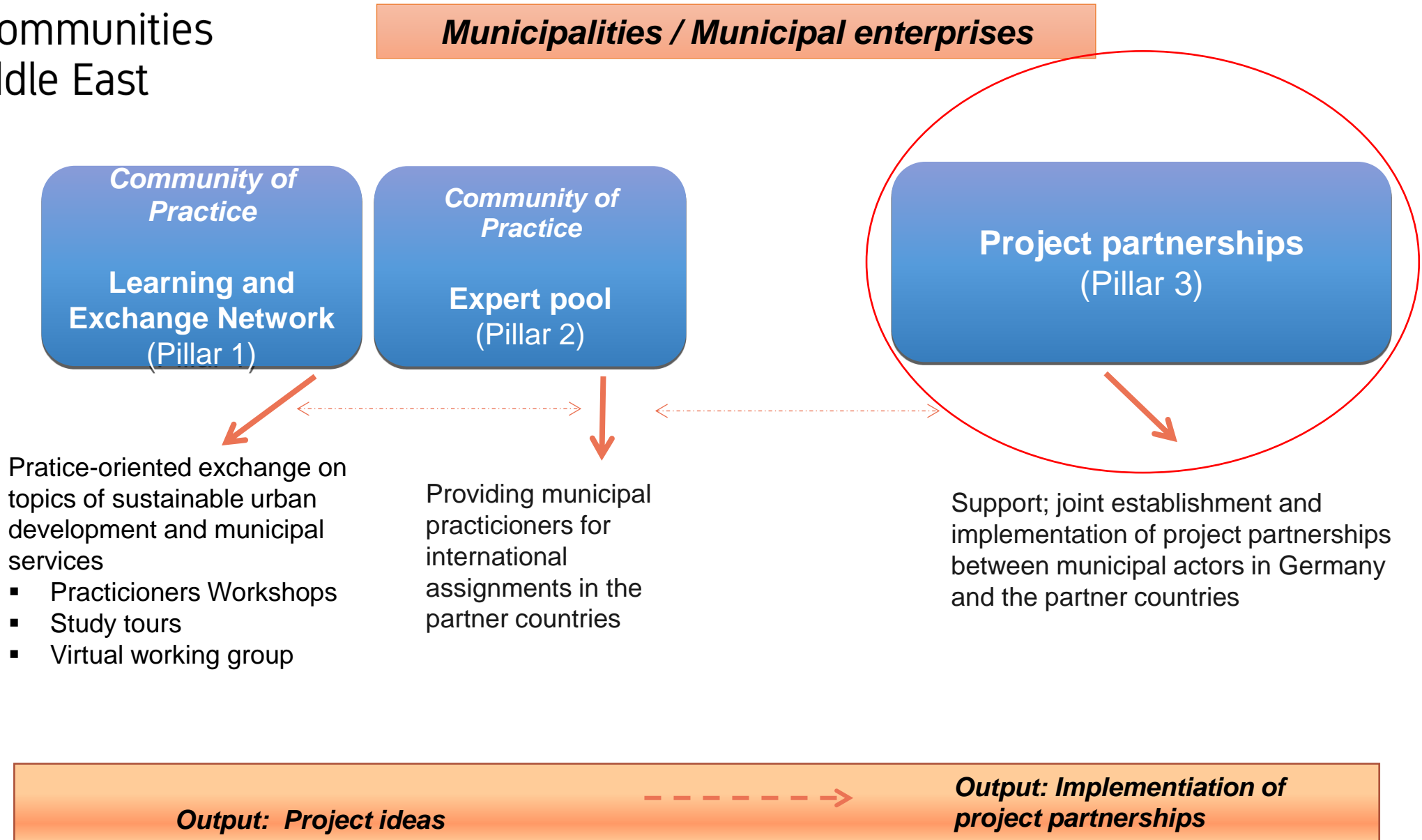


Revitalising a Steel Production
Site

10/01/2018

In the Ruhr region, the City of
Dortmund is responding to the
challenges of industrial structural

Municipal know-how
for host communities
in the Middle East
PROGRAMME



Pillar 3: Project partnerships - Offers and tools

Matching of partner municipalities

Advise and Information, including study tours

Intercultural **qualification**

Support in the identification process of **thematic areas** for joint projects and during project implementation

Networking

Financial support for the initiation and implementation of project partnerships (“Quick Starter Packages”)

Municipal know-how
for host communities
in the Middle East
PROGRAMME

**THANK YOU FOR
YOUR ATTENTION!**

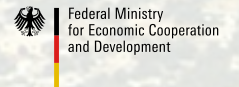
QUESTIONS?

An initiative of

**ENGAGEMENT
GLOBAL**
Service für Entwicklungsinitiativen



On behalf of



with its

SERVICE AGENCY
COMMUNITIES IN ONE WORLD

in cooperation with



Municipal know-how
for host communities
in the Middle East
PROGRAMME

Overview of financial support mechanisms

Connective Cities Project Workshop

Krefeld, 5 September 2018

Wencke Müller

An initiative of

**ENGAGEMENT
GLOBAL**
Service für Entwicklungsinitiativen



On behalf of



Federal Ministry
for Economic Cooperation
and Development

with its

SERVICE AGENCY
COMMUNITIES IN ONE WORLD

in cooperation with



Project partnerships

-Financial support for project implemen

Middle East Starter Package I

Focus:
Building partnerships, initiation
and project planning

Objectives:

- To encourage the commitment of German municipalities to development with host communities of Syrian refugees in the Middle East
- To strengthen host municipalities by exchange of know-how with German partners

Middle East Starter Package II

Focus:
Technical project
implementation

Project partnerships

-Middle East Starter Package I: Formal guide

Who can submit applications?

- German municipal administrations and companies, municipal policy bodies and municipal associations and district administrations

When can projects be requested?

- on an ongoing basis
- The maximum term is 12 months.
- The measures must be implemented throughout the year.

Themes:

- concerning municipal development policy

Size of the grant:

- between 10,000 and 50,000 Euros (full financing)



Project partnerships

-Middle East Starter Package I:

Which measures are eligible for grants?

Fact-finding visits

Meeting and
delegation visits

Feasibility studies
or needs analyses

Project planning
workshops

Qualification
measures

Municipal
information work in
Germany

Short-term expert
consulting services

Expert seminars

Guest visits/
internships in
partner municipality

Project partnerships

-Middle East Starter Package II

Who can submit applications?

- German municipal administrations and companies, municipal policy bodies and municipal associations and district administrations

When can projects be requested?

- on an ongoing basis
- The maximum term is 36 months

Size of the grant:

- between 50,000 and 250,000 Euros (full financing)

Focus: Technical implementation of partnership projects



The Online Portal

<https://initiative-middle-east.com/ar/>

Deutsch | استشارة
التواصل

الرئيسية | المبادرة | بيانات أساسية | عروض | المشاريع | المكتبة الإعلامية

Municipal know-how
for host communities
in the Middle East
PROGRAMME



مجمع الخبراء

في مجمع خبرائنا الذي يضم أكثر من 80 خبيراً بشؤون البلديات نجدون الأشخاص المناسبين لتبادل الأفكار الاختصاصية.

منتديات الحوار

استفيدوا من فعالياتنا للعمل على إيجاد حلول محلية بمعية خبراء آخرين بشؤون البلديات.

شاركوا

هل تريدون كبلدية أو جمعية أن تلتزموا بدعم بلدية في الشرق الأوسط أو من أجلها؟ نحن نطلعكم على كيفية القيام بذلك وعلى المواقع الممكنة.

Project partnerships

- Project implementation in Jordan

Local/political partner (MoU):

- Ministry of Municipals Affairs (MoMA)
- Ministry of Planning & International Cooperation (MoPIC)

Cooperation partner:

- Deutsche Gesellschaft für Internationale Zusammenarbeit (GIZ)

Project Coordination Desk based in Amman:

- Local focal point of the project: Mohammad Ababneh

German-Jordanian Municipal Partnerships

- KommunalService Jena – Deir Alla
- AVG Köln – Wassatiya
- AW Rendburg-Eckernförde (Borgstedt) - Kerak
- München – Gharb Irbid
- Burgenlandkreis – Bani Kinana
- Donauwörth – Jerash (initiation process)
- Amman – Dresden (initiation process)

Municipal know-how
for host communities
in the Middle East
PROGRAMME

THANK YOU FOR YOUR ATTENTION!

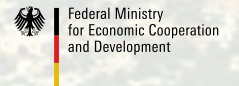
QUESTIONS?

An initiative of

**ENGAGEMENT
GLOBAL**
Service für Entwicklungsinitiativen



On behalf of



with its

SERVICE AGENCY
COMMUNITIES IN ONE WORLD

in cooperation with

