

Development of a Sustainable Urban Mobility Plan for Dresden

4th Connective Cities Asian Dialogue Event
– Practitioners' Workshop

27 – 29 September 2016, Bangkok, Thailand

Kerstin Burggraf
kburggraf@dresden.de

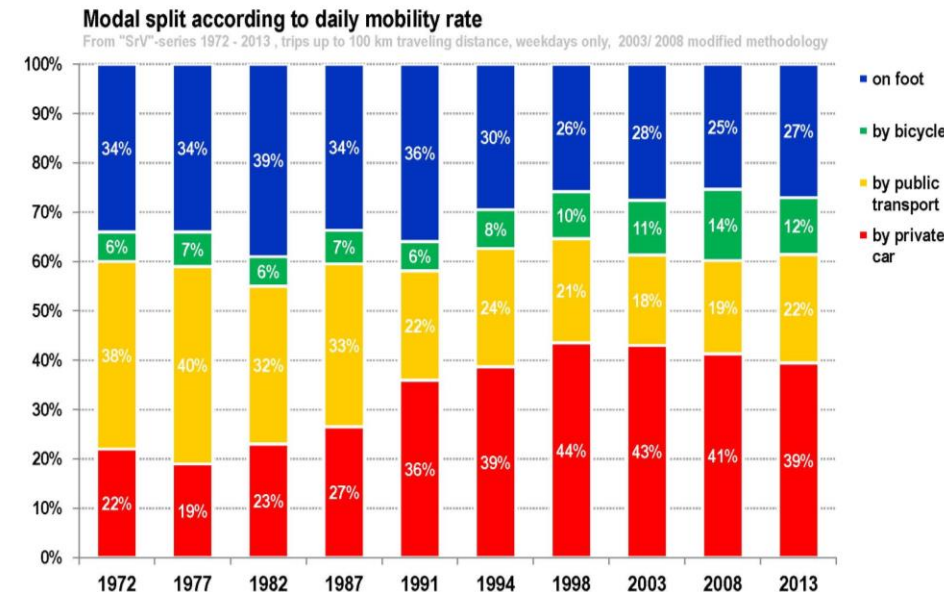
Germany
City of Dresden

Urban planning office
Department of Transport Development Planning
www.dresden.de/verkehrsplanung



1. Starting point: What was the main challenge, issue, problem to be addressed by the practice?

- air quality/climate change, traffic noise, accessibility
- European and national legislation
- growing urban population and change of mobility behaviour
- maintenance and financing of infrastructure
- new forms of cooperation and participation for public acceptance
- transformation from infrastructure planning to SUMP

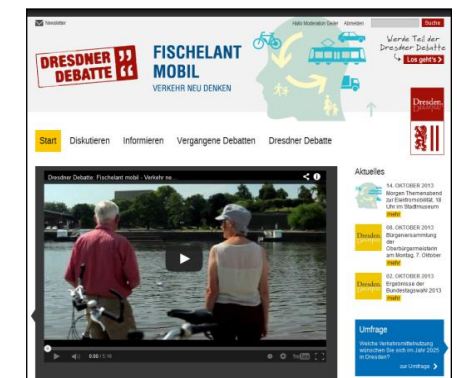
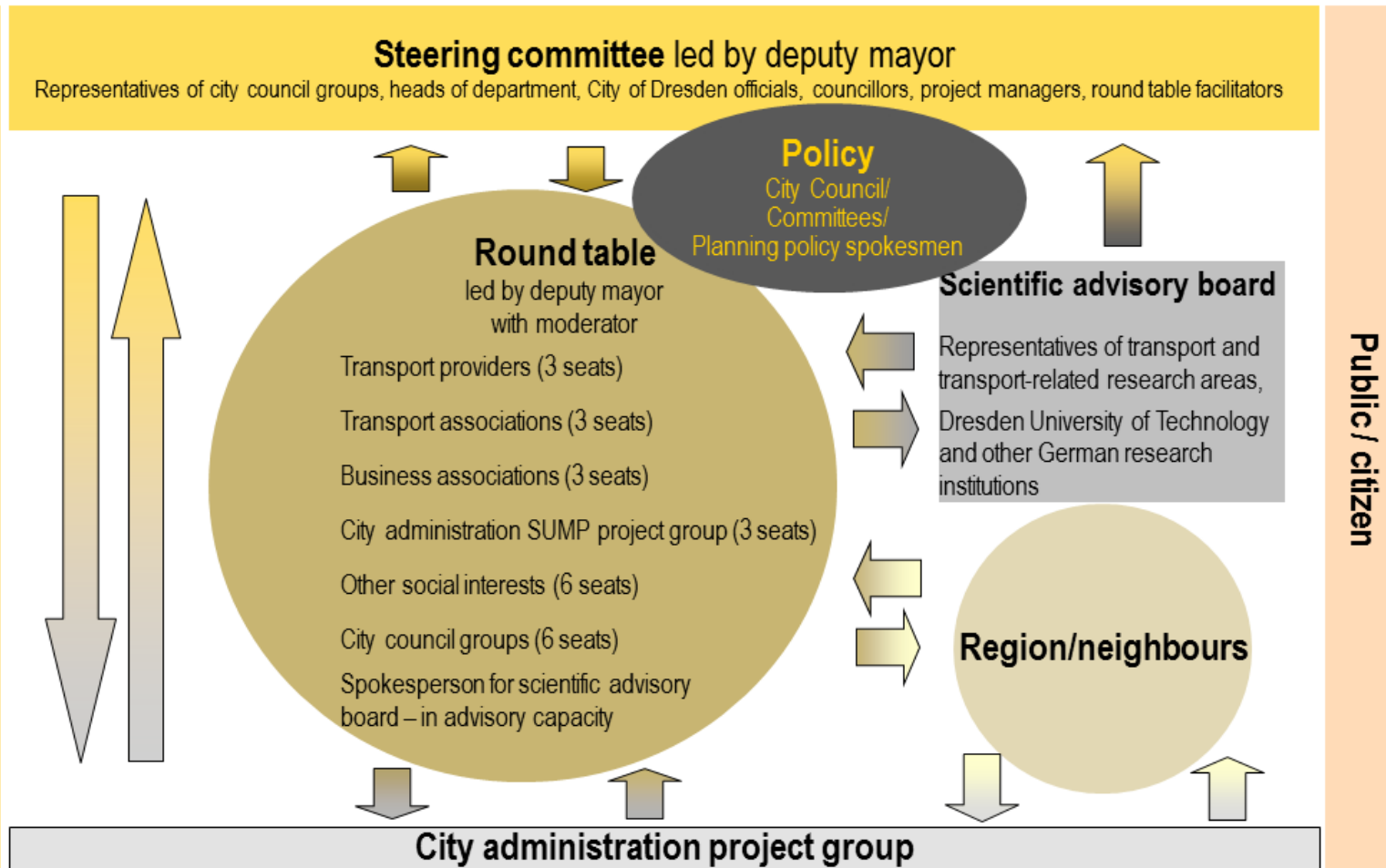


→ Improve mobility and quality of live

SUMP = strategic integrated plan to meet the mobility needs of people and economy in Dresden and the region for the next decades

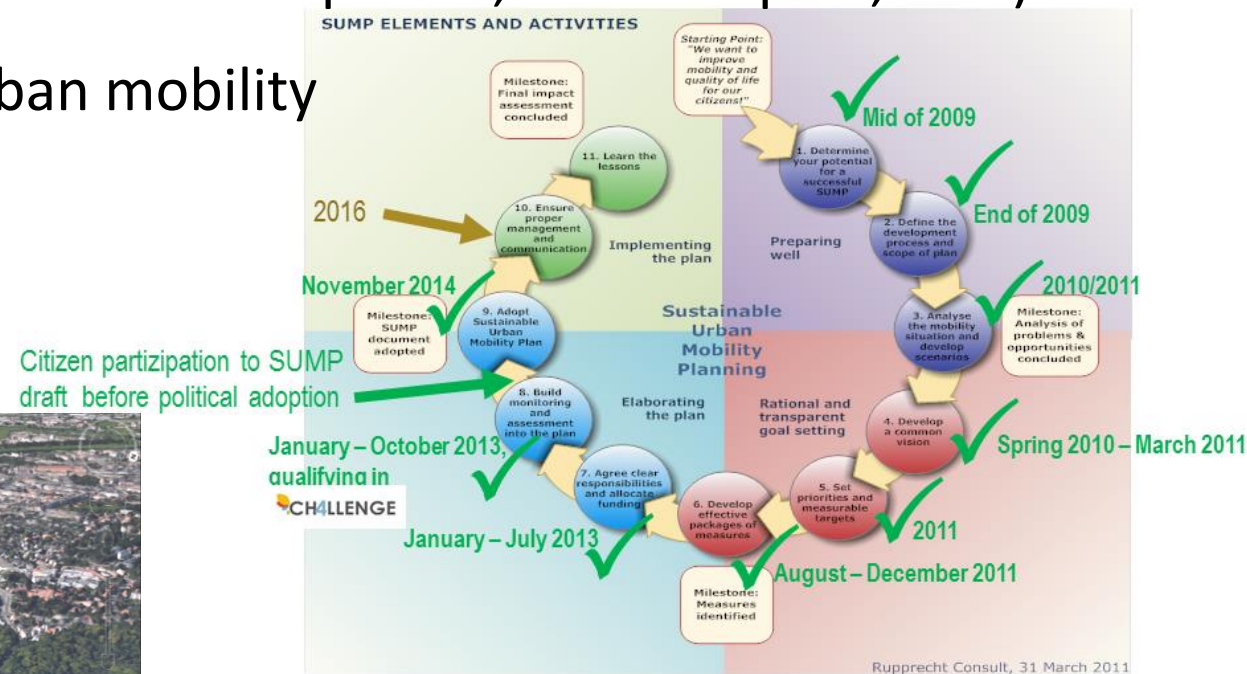
2. Institutional setting:

- political decision to develop a SUMP
- National recommendations and European guidelines for SUMP



3. Approach: Which methods, tools or instruments have been developed and were applied to address the challenge?

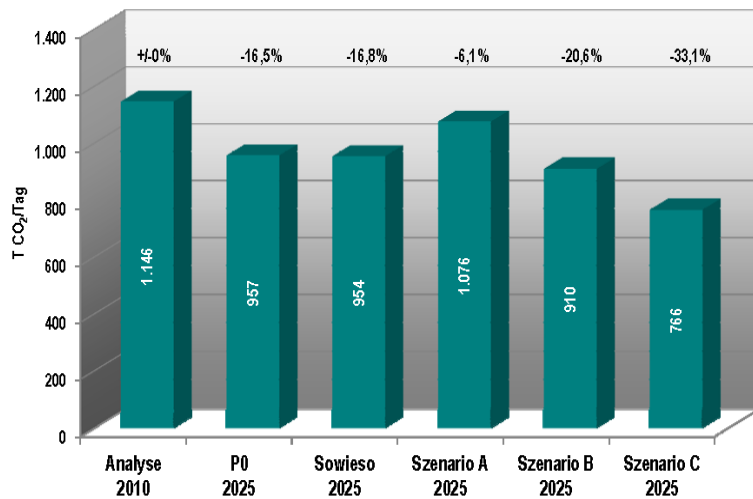
- Analysis, Objectives, Scenario technique, Measure selection, Mobility Strategy 2025plus, Action Plan 2025, Multi-modal traffic demand modelling, Monitoring and Evaluation
- broad participation, transparent planning process
- integrated planning (e. g. urban development, clean air plan, etc.)
- strategy for sustainable urban mobility



4. Outputs:

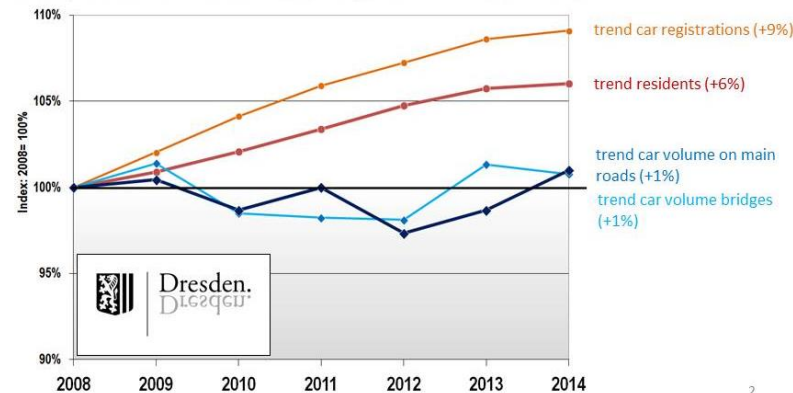
- Mobility Strategy for decades
- Action Plan with 163 measures for sustainable future
- Evaluation of planning process
- Monitoring and Evaluation of measure impacts, continuously every 3 years
= control of success (SUMP as a living document)

Predicting CO₂ emissions in Dresden



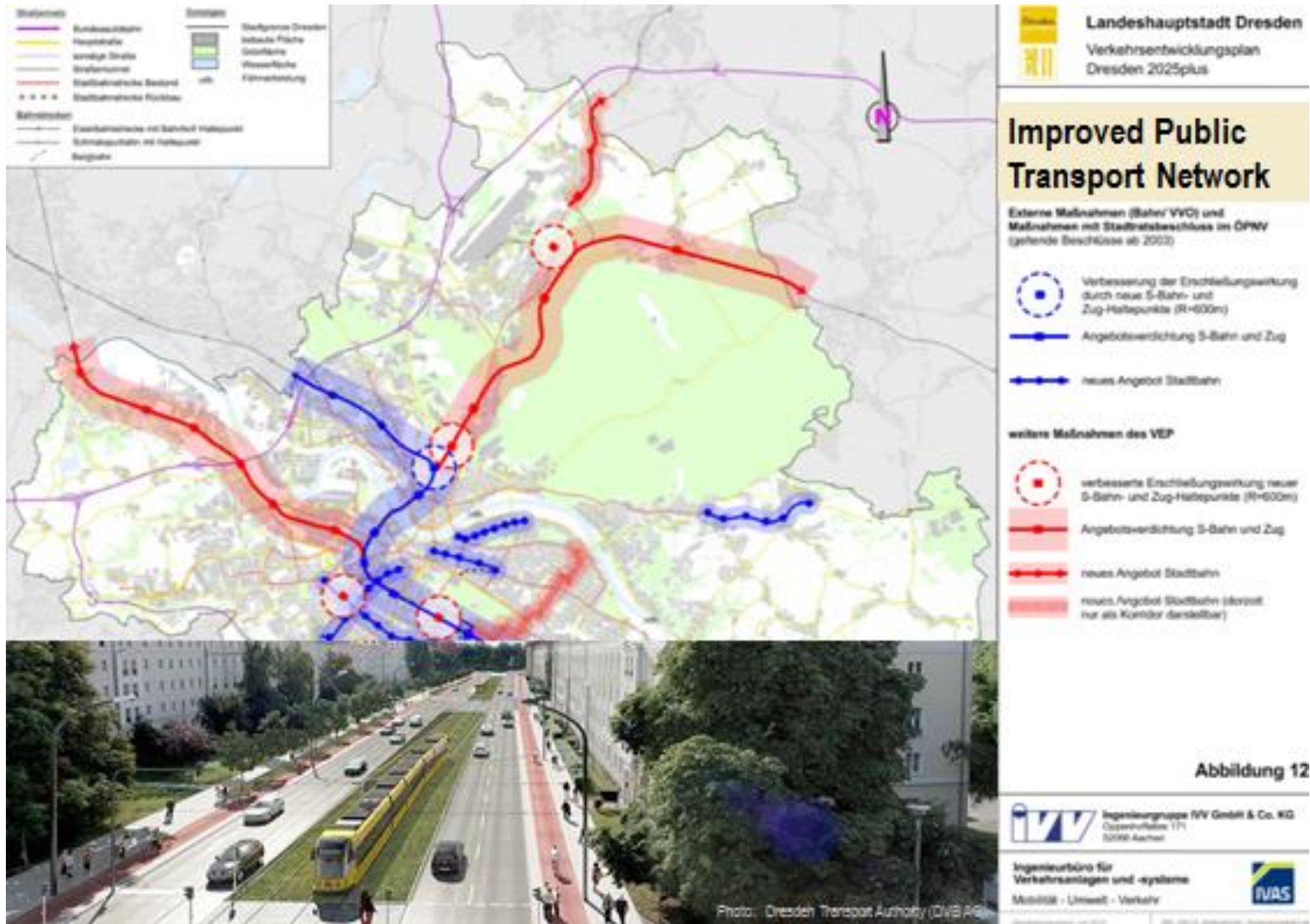
Grafik 22: Entwicklung der CO₂-Emissionen aus Kfz-Verkehr in Dresden

Trends of car volumes on main roads and bridges compared to structural data (year 2008 to 2014)



5. Lessons:

- Integrated planning is challenging and needs time (ca. 3 – 5 years)
- Transparency, clear targets and strategies are necessary
- scenario technique and assessment of impacts for authoritative forecast
- Mix of measures incl. soft measures
- External experts are helpful but involvement of administration and decision makers is more important
- Consensus oriented processes need the involvement of politicians and leading administrators
- Cooperation and participation need management
- Public relations is a continuous task
- SUMP is a continuous process: quality management by evaluation
- SUMP implementation is a bigger challenge than SUM-planning



6. Transfer:

- Legal regulation, guidelines/recommendations
 - www.german-sustainable-mobility.de/recommendations-for-mobility-master-planning-published/
 - www.eltis.org
- Plan the process (steps, approach/methodology, participation/involvement, planning culture and frameworks, ...)

