

Title:

XiDi streetscape design and environmental quality improvement of Pearl River in Guangzhou,China.

01



1900: Tracing the historical source

One of the cradles of the maritime silk road

Area(km²) 7434

Population(ten thousand) 1275

GDP (hundred million dollars) 2720

Guangzhou

The only continuous external port city in China

Old city

02



New district



1920: Business prosperous

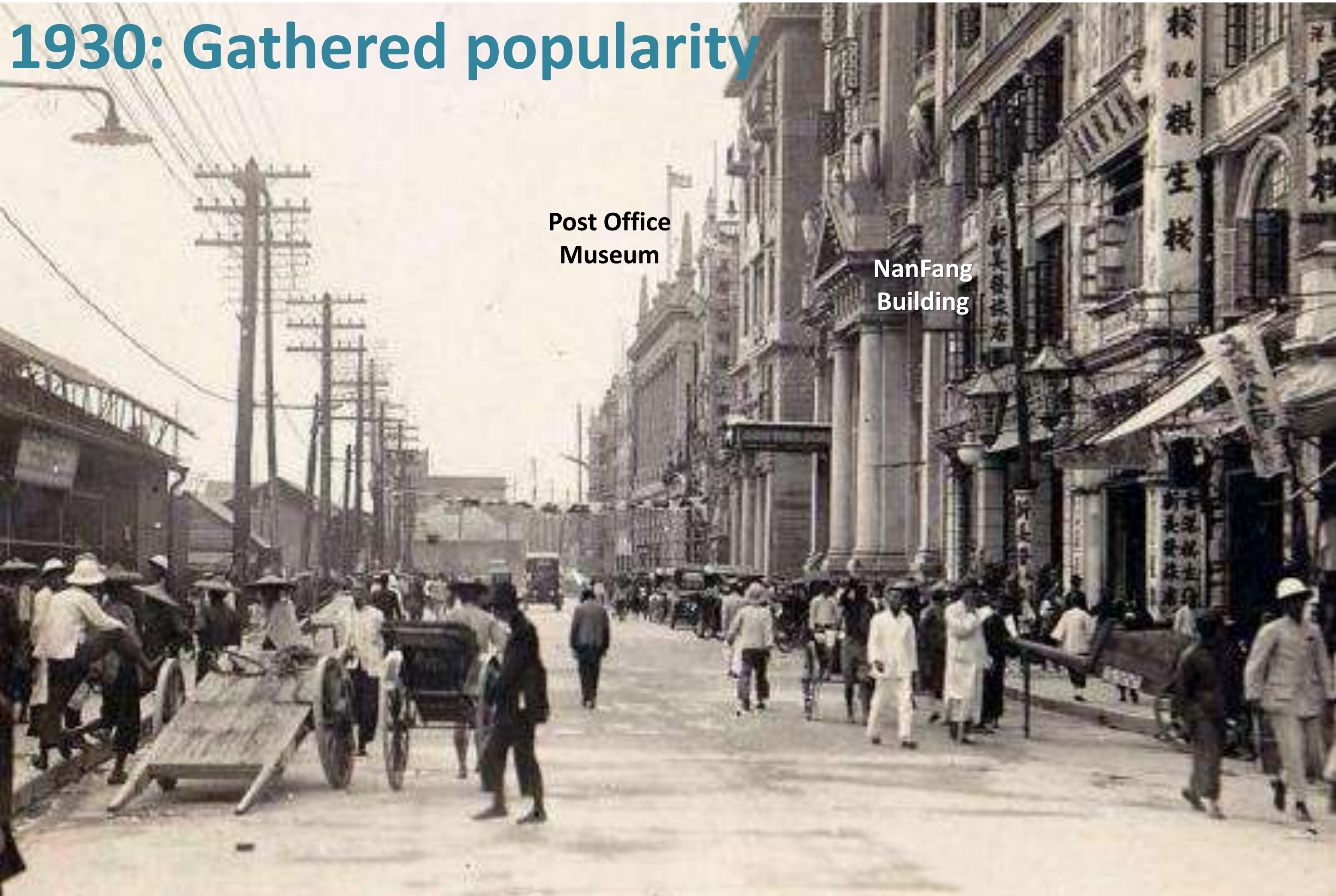
03

TaYing Tower Custom House Post Office Museum XiDi Landing NanFang Building



Once thriving

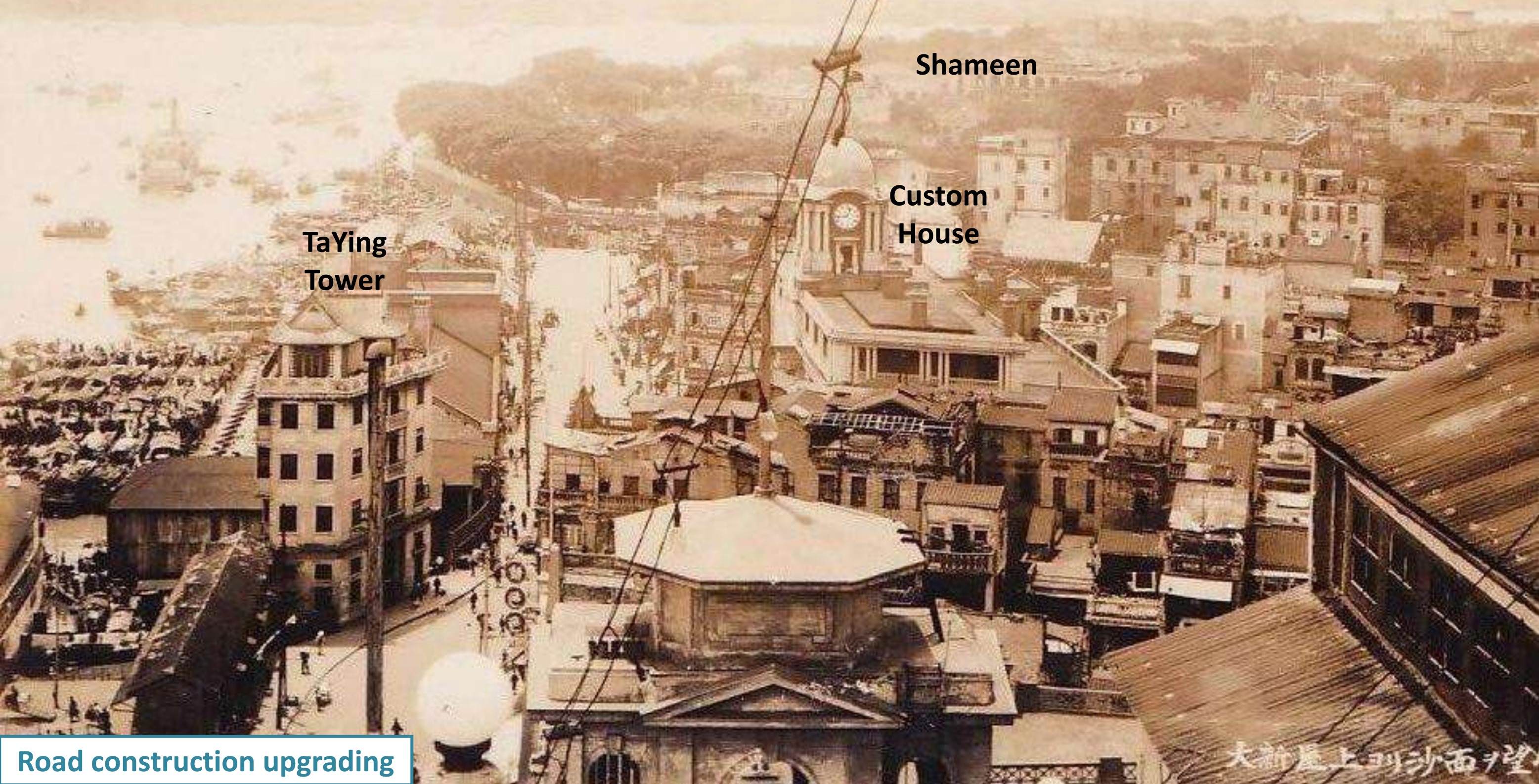
1930: Gathered popularity



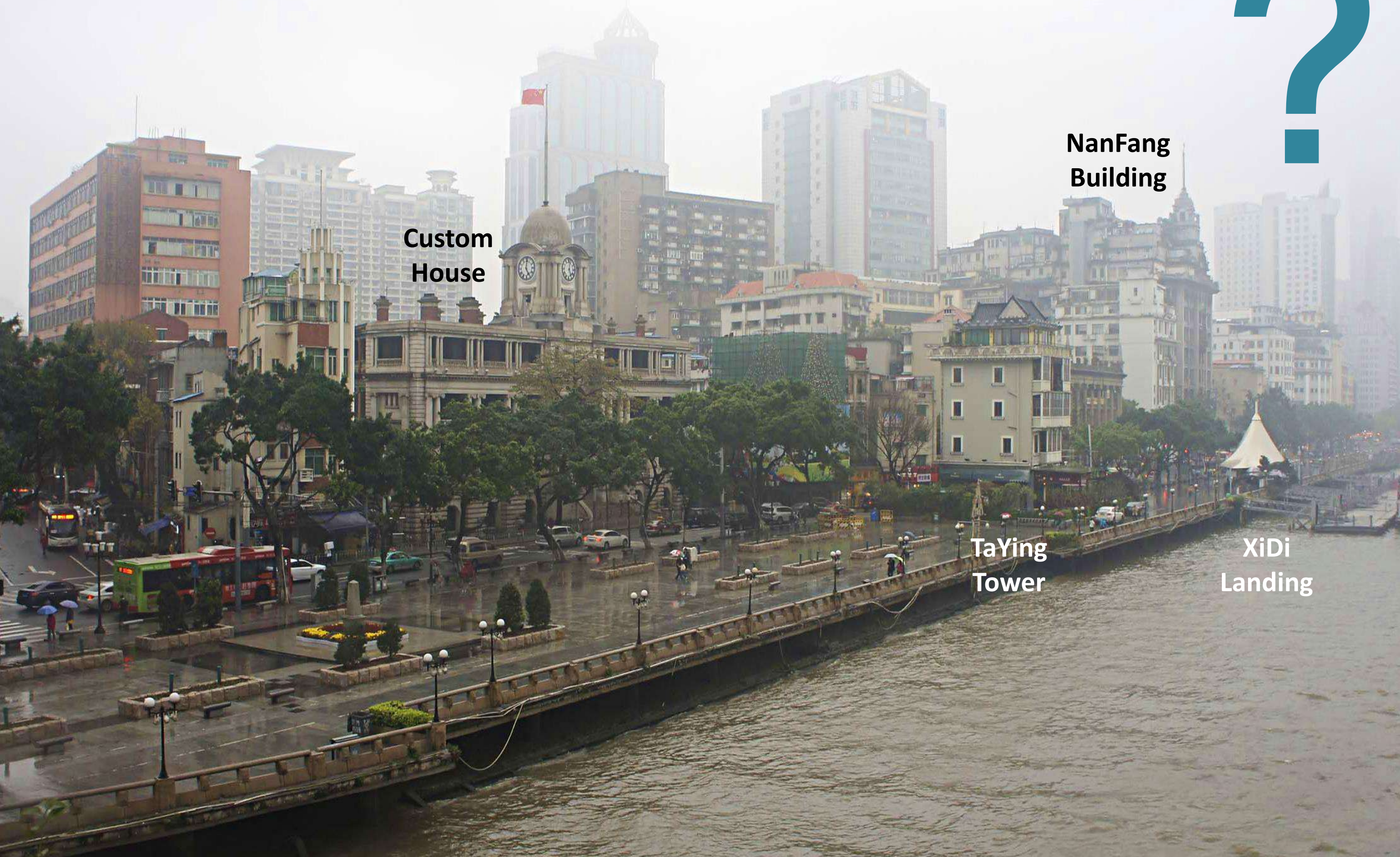
The sidewalk of the street shop was built

1960 Rapid urban construction

04



2016 How to revive prosperity



Secondhand goods wholesale market and express cargo unloading point



Connected walking system



Concern: Contradiction between man and car

06



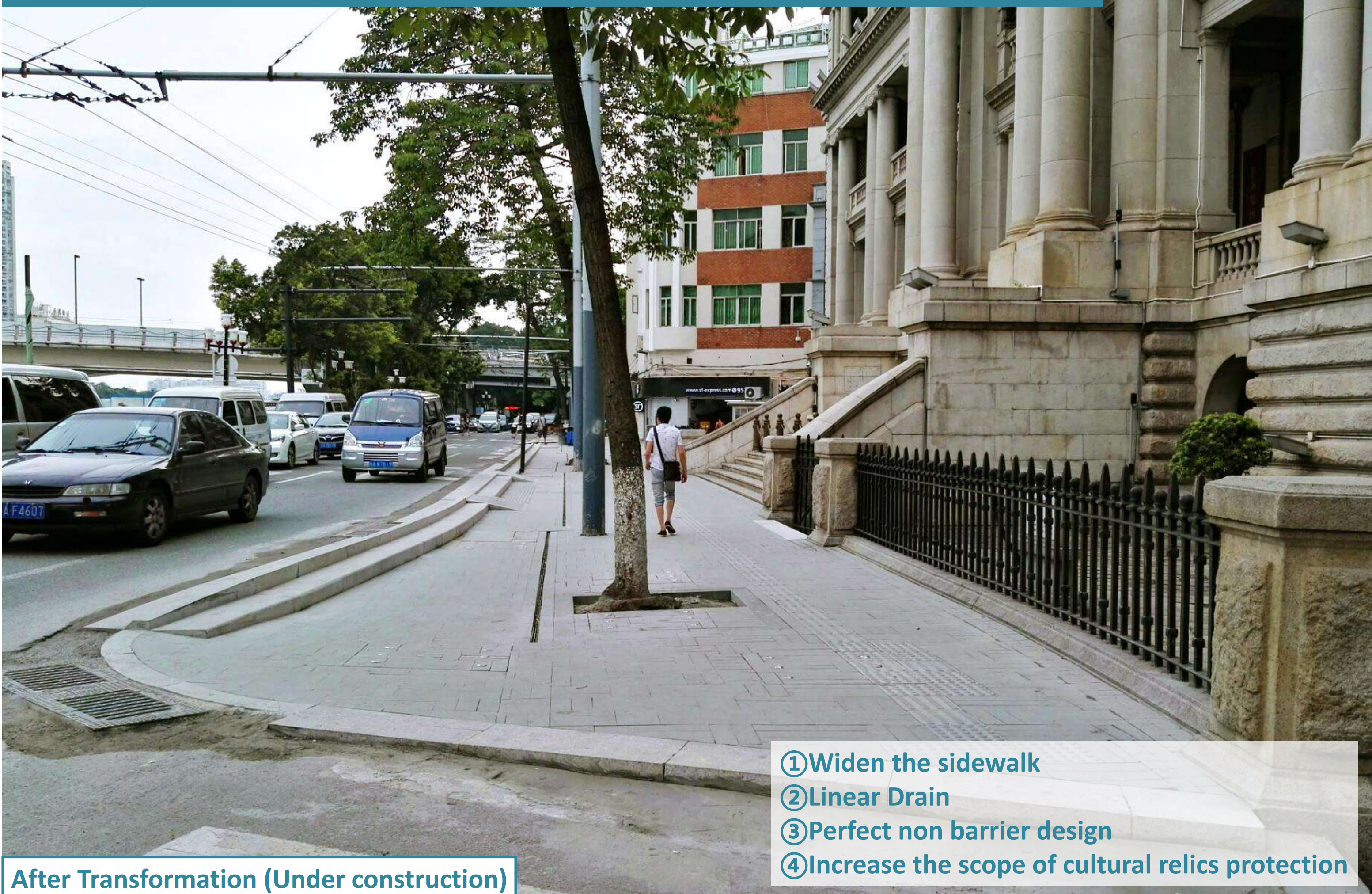
Barrier free access across the street



Concern: Contradiction between rapid development and historical inheritance

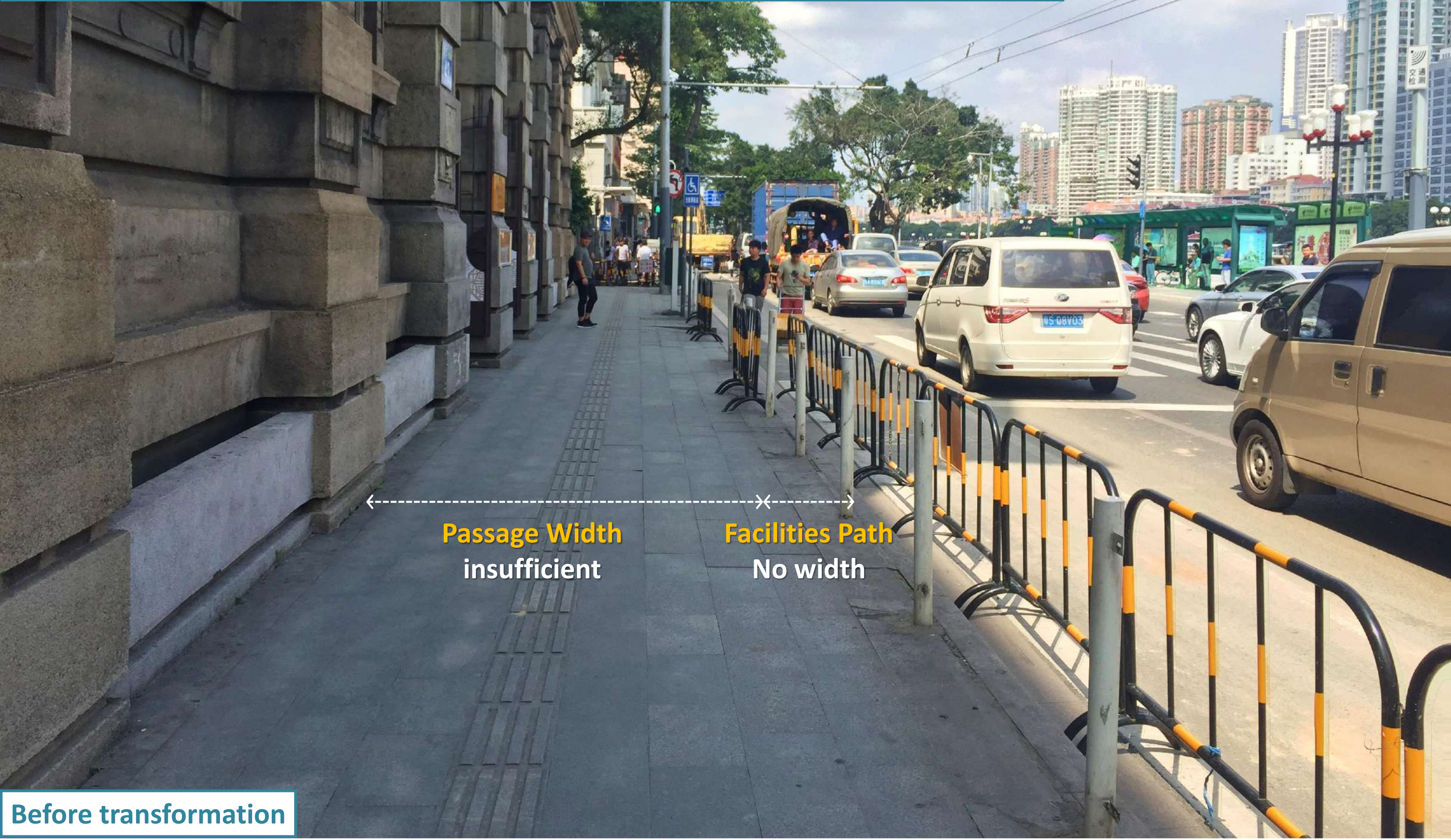


Broaden the scope of cultural relics protection



Concern: Contradiction between rapid development and historical inheritance

08



Concern: Contradiction between rough management and vulnerable groups



Connected cycle track



Concern: Contradiction between rough management and vulnerable groups



Barrier-free waterfront platform



Method: Public participation in

11

与居民共同商量步行方案



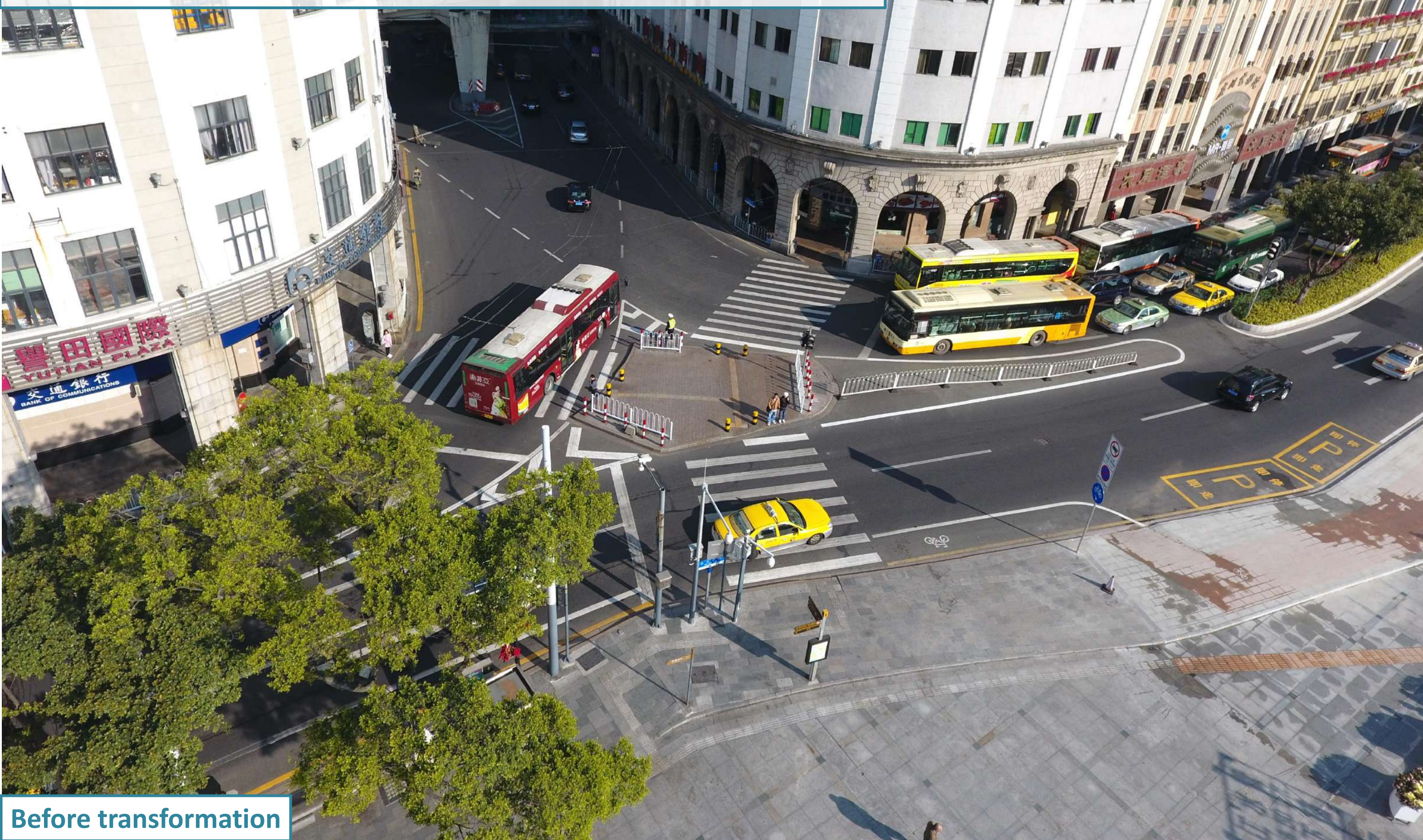
Realize the small turning radius



Method: Public participation in

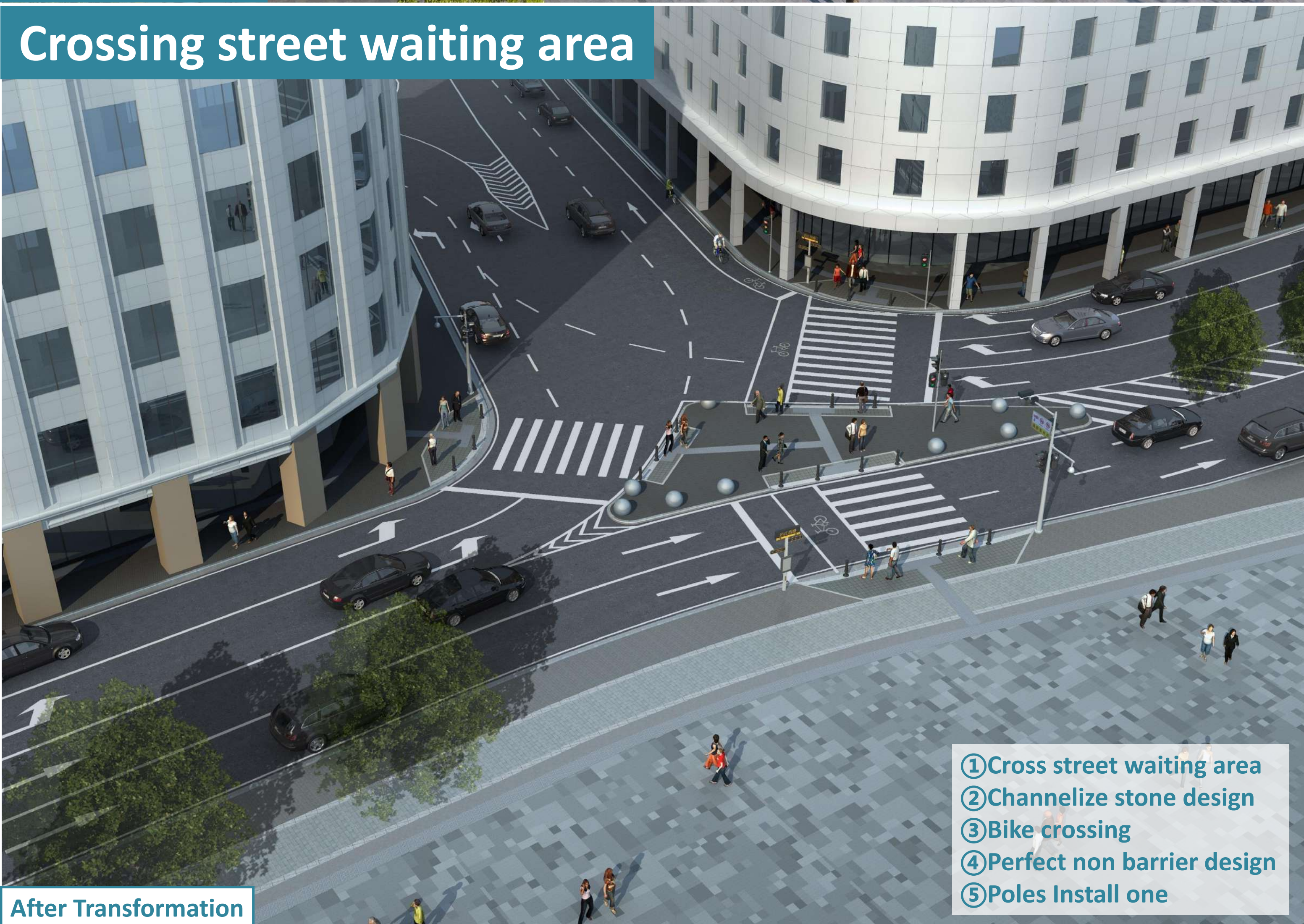
Discuss the traffic plan with the traffic police

12



Before transformation

Crossing street waiting area



After Transformation

- ① Cross street waiting area
- ② Channelize stone design
- ③ Bike crossing
- ④ Perfect non barrier design
- ⑤ Poles Install one

Method: Democratic decision-making

13

Multiple departments negotiated the migration of trees

The big tree
Block the view
of cultural relics

The big tree
Daily maintenance
management difficulty

Open Plaza
Lack of theme and popularity

Before transformation

The migration of trees

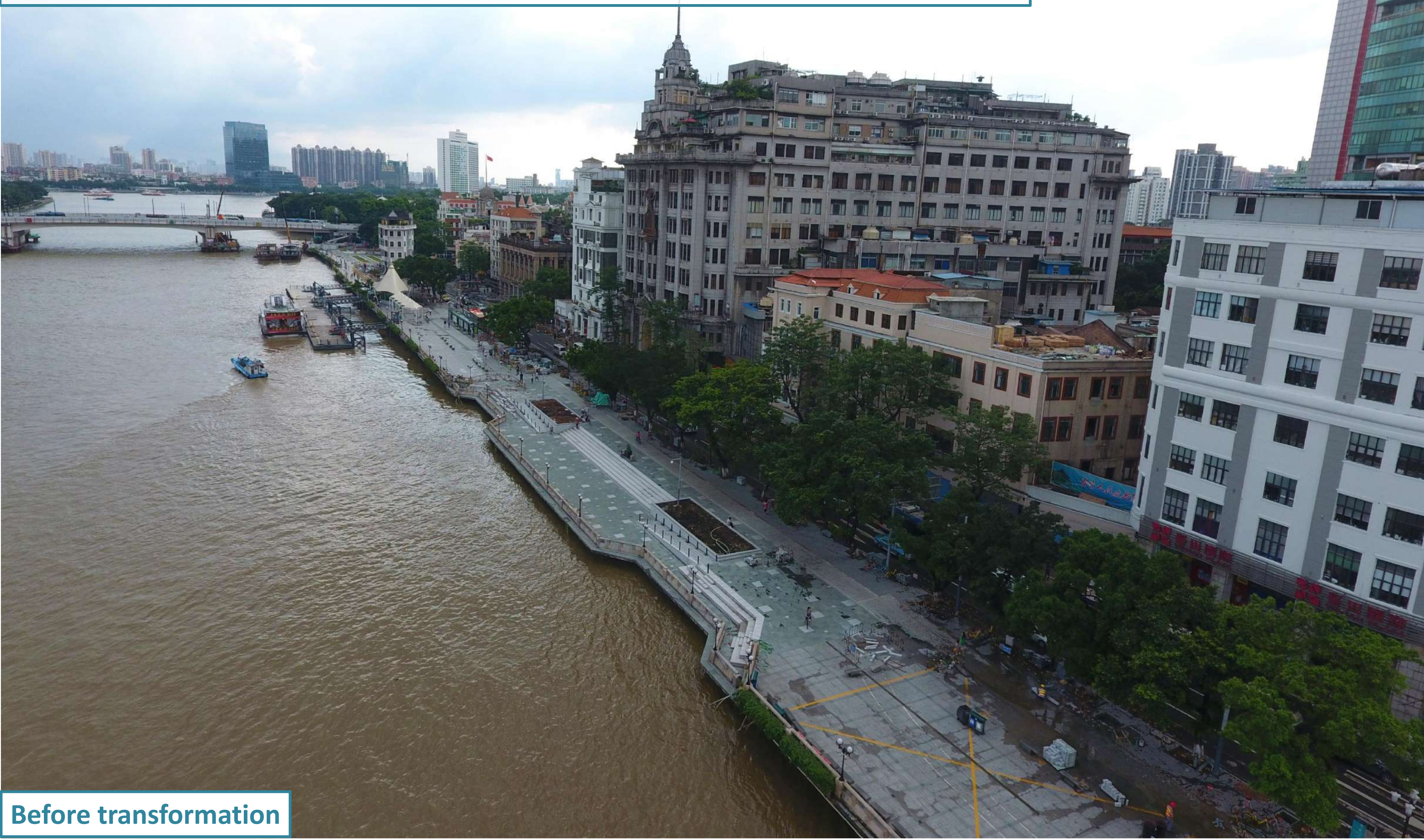
After Transformation

- ① Adjust measures to local conditions
- ② Restoring historical scene
- ③ Gathered popularity

Method: Democratic decision-making

Consultation with the construction owner

14



Before transformation

Restoration of the original style of cultural relics



After Transformation

Method: Government support

Coordinate the implementation of all departments

15

Bus terminal

Make sure the two buses are side by side

The fire department

Make sure fire engines pass



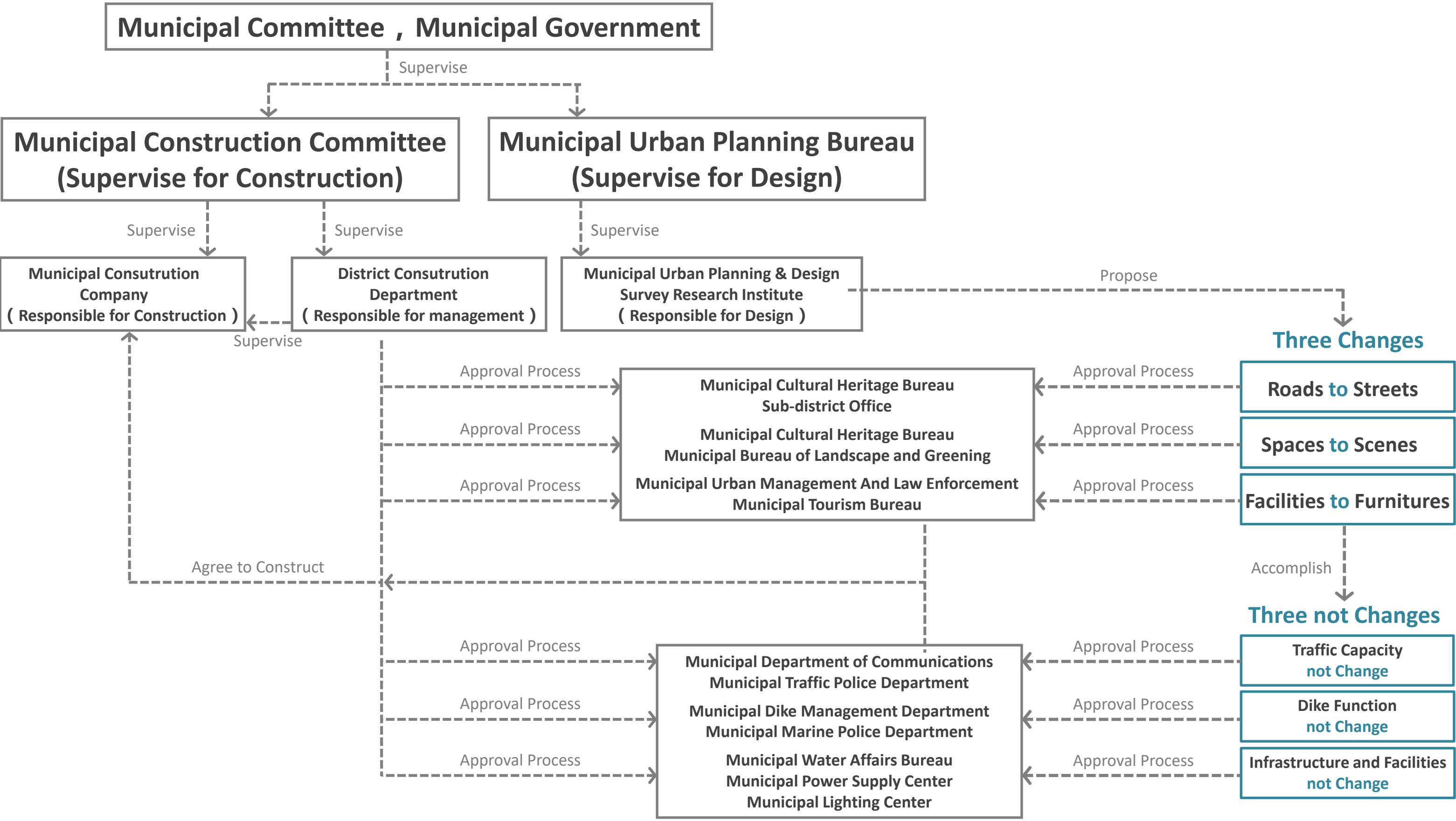
Before transformation

Manage the streets in a comprehensive manner



After Transformation

- ① Small turning radius
- ② Widen sidewalk
- ③ Add fences
- ④ Temporary parking space



XiDi 10 Provisions

Required	Recommendation
1. Full Site Survey	6. Construction Reverse Design
2. Professional Design Platform	7. Structural Reverse Master Plan
3. Professional Judging Team	8. Special Reverse Standard
4. Organization Management	9. Spot on Surveillance Team
5. Construction Management	10. Pick Construction Team