

Integrated climate adaptation concept for the City of Hagen - reflecting partnership and financing -

Environmental agency, City of Hagen

Fred Weber

head of the department for general environment planning

Joint project partner:



Regionalverband Ruhr



1. Starting Point

- current challenges: demographic change and climate change
- population decline offers space potentials that could be used to improve the climate comfort
- need of approaches for climate adaptation in the spatial overall planning
- need of new financing strategies
- need of internal interdisciplinary network and external cooperation between competent authorities (e.g. science and regional institutions)



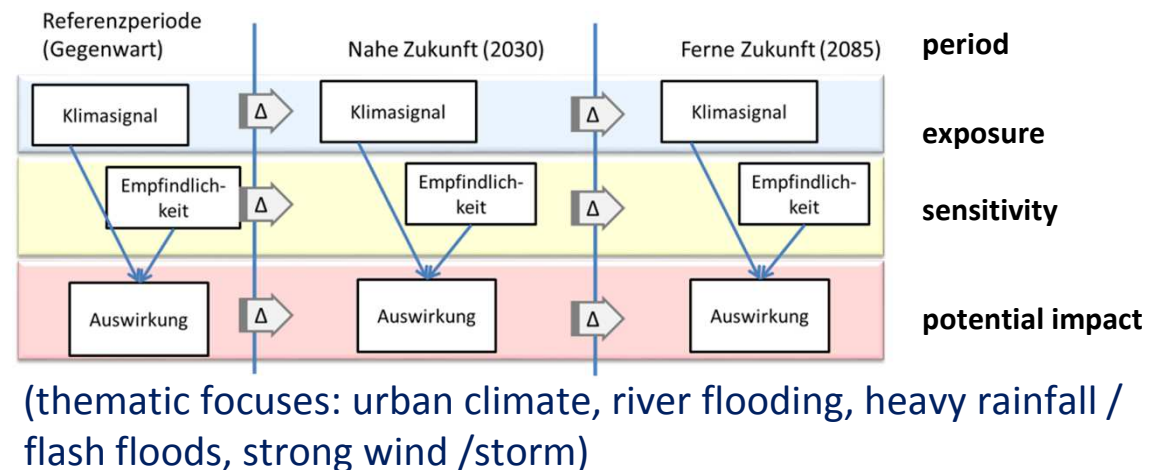
2. Institutional Setting

- German Strategy for Adaptation to Climate Change (DAS):
- funding priority: municipal lighthouse projects and development of local and regional partnerships
- built up an interdisciplinary team of 20 municipality experts
- analysis and strategy development with all the actors of the city administration, local politics and civil society
- e.g. local residents, civil society, fire department, Chamber of Industry and Commerce, energy suppliers, welfare organizations and many more



3. Approach

- 1st step:** - identifying and prioritizing the need for action
- development of a municipal overall strategy
- elaboration of a catalogue of measures and monitoring

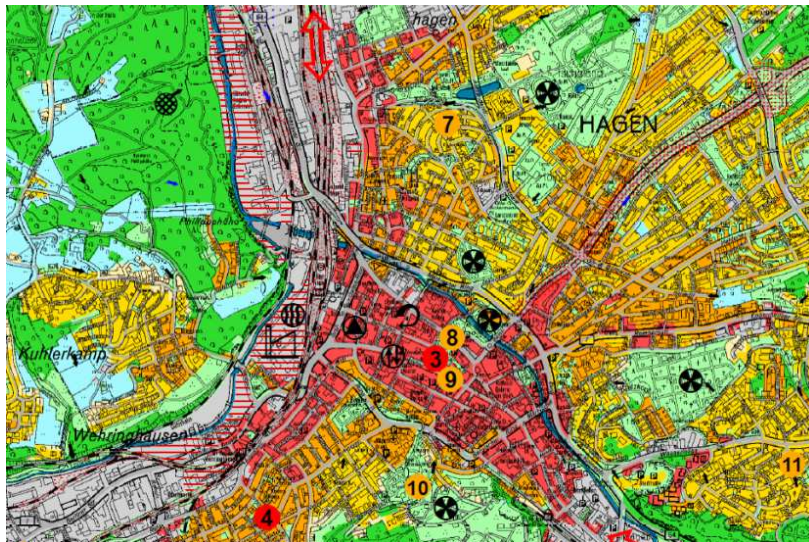


- 2nd step:** this conceptual approach is required for funding of measures in urban development and urban upgrading

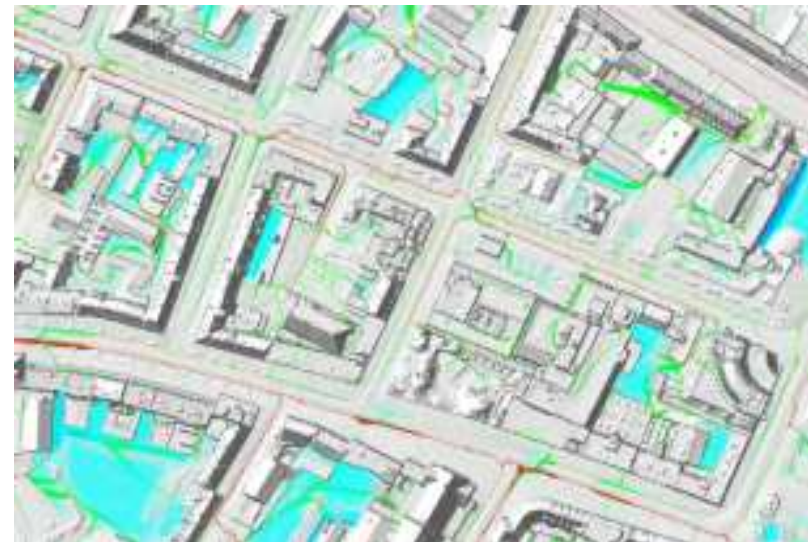
4. Outputs

- developing an integrated adaptation concept with concrete recommendations for the city development and building planning, open space development and flood protection

local climate analysis map



plan of flow paths and sinks



5. Lessons learned

- increasing concern due to the aging population - regardless how the climate signal will change in the future
- stakeholder groups, project managers in administration and politics have to be included at an early stage to take their interests into account
- influential skeptics in the administration should be included in order to avoid or overcome resistance
- well-structured and multidisciplinary project management is required for a successful implementation
- it is highly recommended to replace co-payment with municipal staff
- to establish climate adaptation it should be combined with municipal key tasks – here investment funds are very helpful

6. Transfer

- knowledge transfer into the civil society (downscaling)
- committee work / involve politics
- regional and national network-meetings
- mainstreaming "Integration in the administration" over the intercommunal network of The Regional Association Ruhr (RVR)
- municipal lighthouse project: transfer to other municipalities in the Ruhr area

