



# **Upgraded slum, Upgraded people: A case of Kariobangi South Slum in Nairobi Kenya**

**WORLD BANK FUNDED  
Kenya Informal Settlement  
Infrastructure Programme**

***BY JAMES NJOROGE***



# KCC VILLAGE



- Located in Kariobangi South Location in Embakasi constituency- Nairobi
- About 33acreas and was until allocation, public land;
- Population-approx. 100,000 household with about 10,000 households;
- 800 semi permanent and permanent structures most which have between 5&20 rooms of 10ft by 10ft in size;
- The houses are constructed with old sheets and timber.



# BEFORE UPGRADING



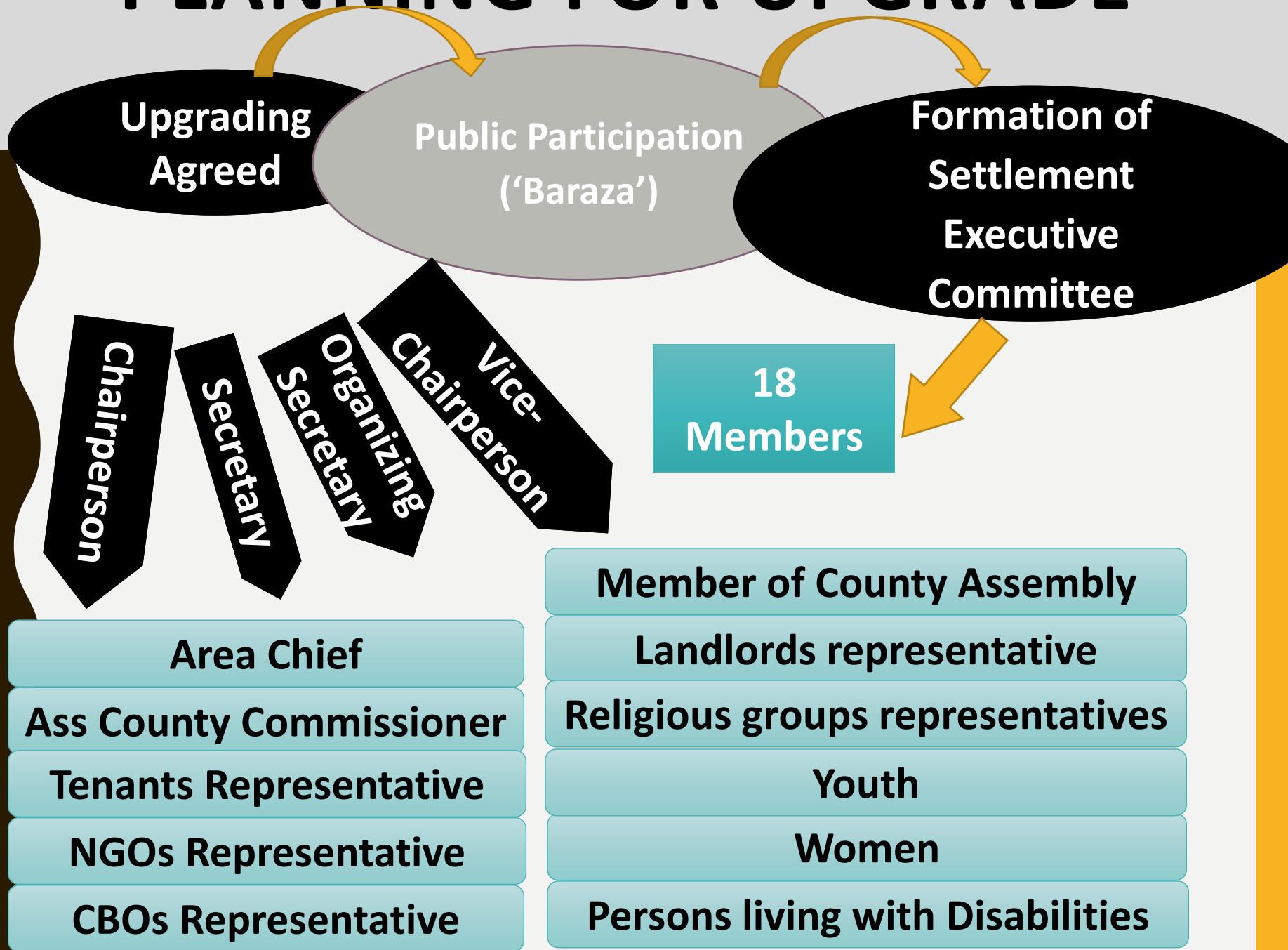
- ☐ The village uses pit latrines
- ☐ Drainage was poor and water was disposed in unmaintained terraces.
- ☐ There was no power connection.
- ☐ Poor Access roads
- ☐ Waste was disposed in any free available space.

# IDENTIFIED AREAS FOR UPGRADE



- ☐ **Water Provision;**
- ☐ **Electricity;**
- ☐ **Improvement of access roads;**
- ☐ **Sewerage and drainage system**

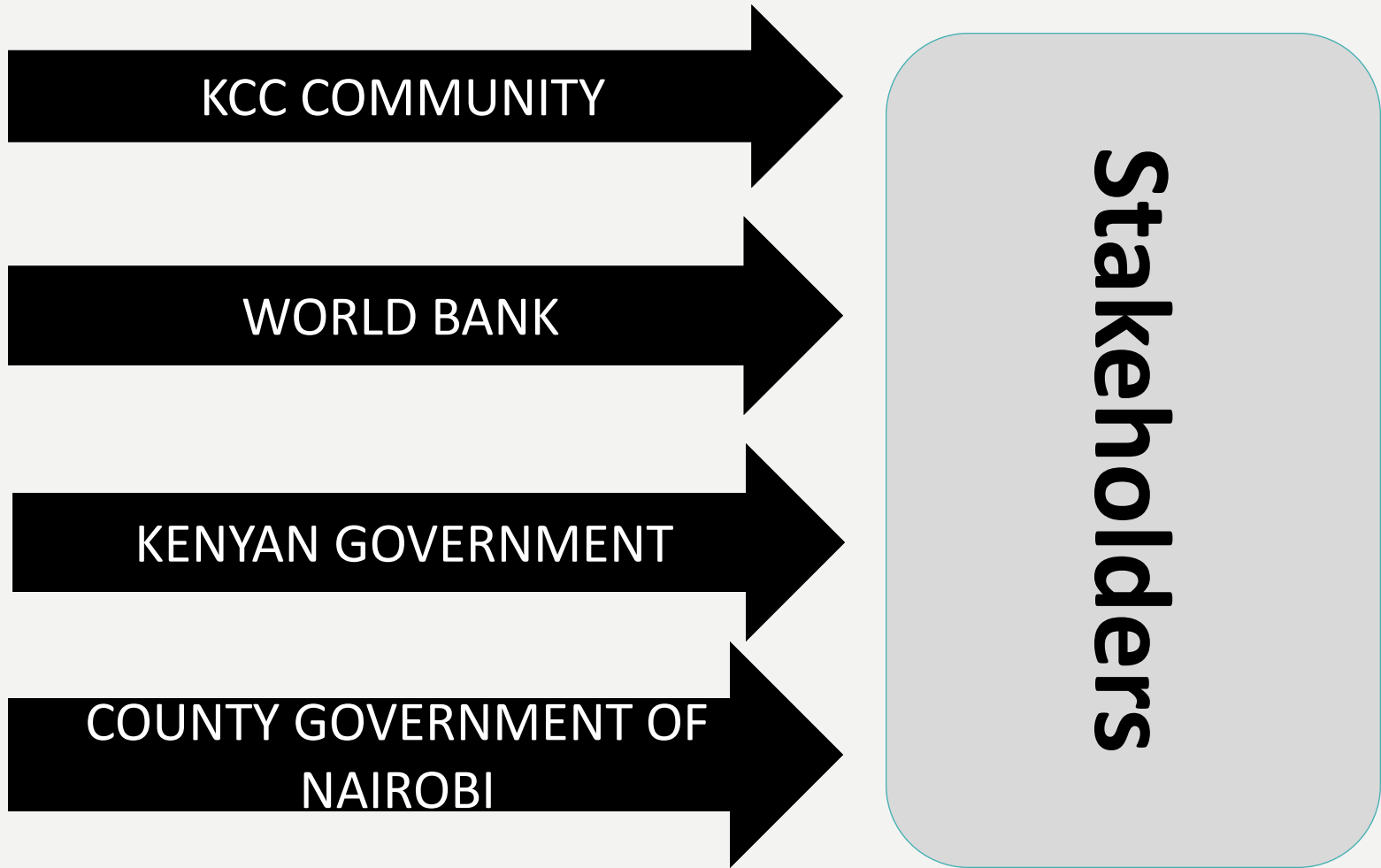
# PLANNING FOR UPGRADE





# UPGRADED KCC







# HAPPY KCC RESIDENTS



Thank  
you!