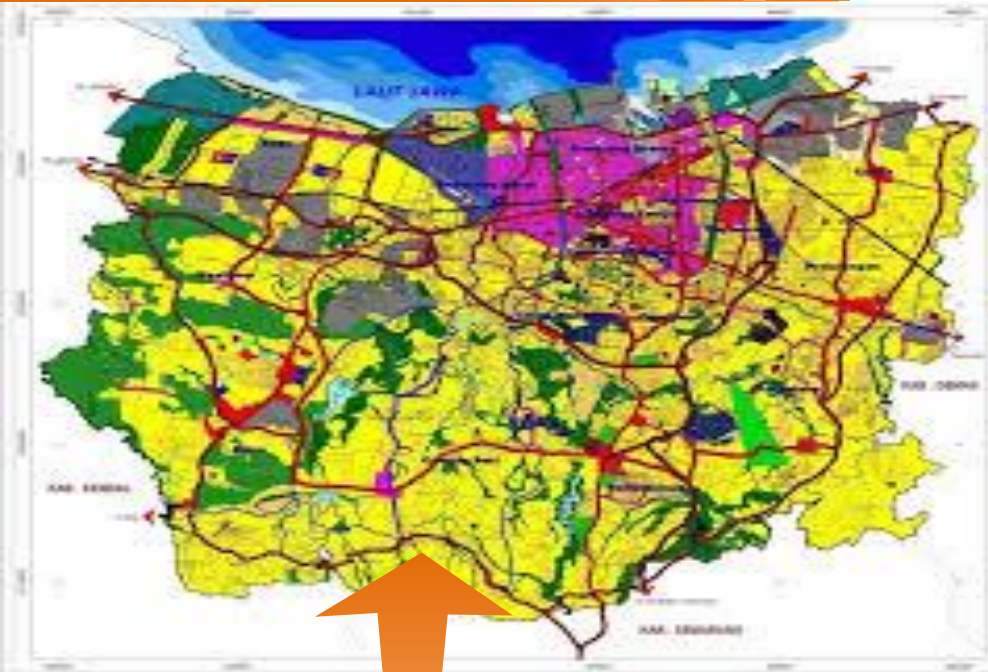




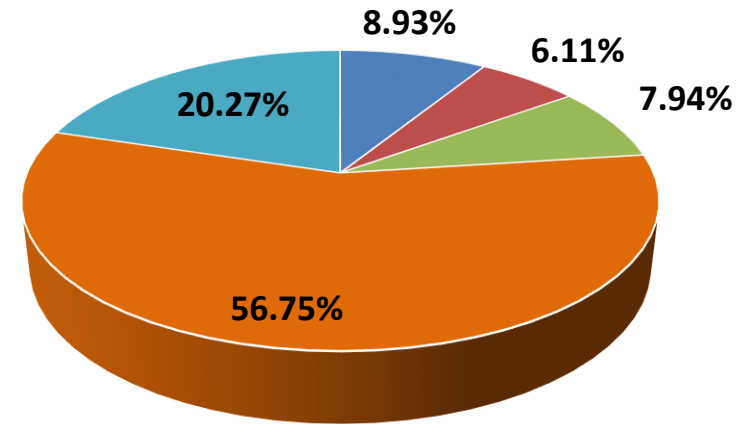
# Does Green Mobility Mean for Climate and Gender?

Prepared by : Purnomo Dwi Sasongko, Indonesia  
Cebu, 17 – 18 November 2015

# Main Issue



Contribution to GHG emission (%)



■ Settlement ■ Commercial ■ Industrial  
■ Transportation ■ Waste

- Transportation emits 57% of Semarang GHG emissions in 2012
- Current public transportation is not reliable, safe, and accessible for all citizen.
- Women who mostly rely on public transportation affect the most.
- How to establish attractive and reliable mass transportation system?



# Institutional Setting

## STAKEHOLDERS

## PHASE

## OUTPUT



Planning



Integrated Climate Change Strategy (Adaptation and mitigation) with gender assessment

Implementation



# Approach



Approach



Integrated Climate Action Approach



Method,  
Tools and  
Instrument

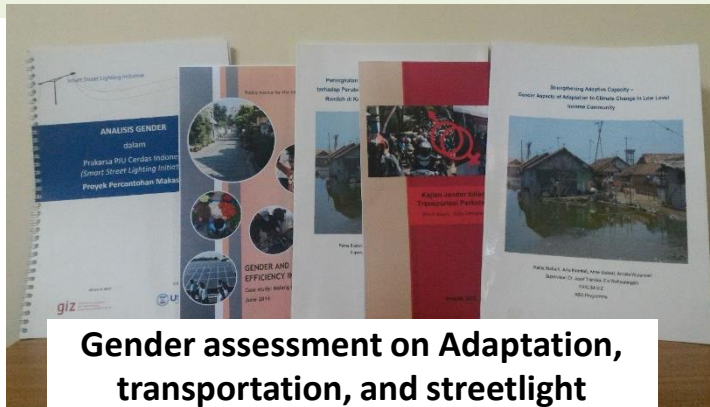


- Green House Gases Assessment
- Vulnerability and Risk Profile assessment
- Integrated Climate Change Strategy

Integrating gender sensitive  
to Action Plan

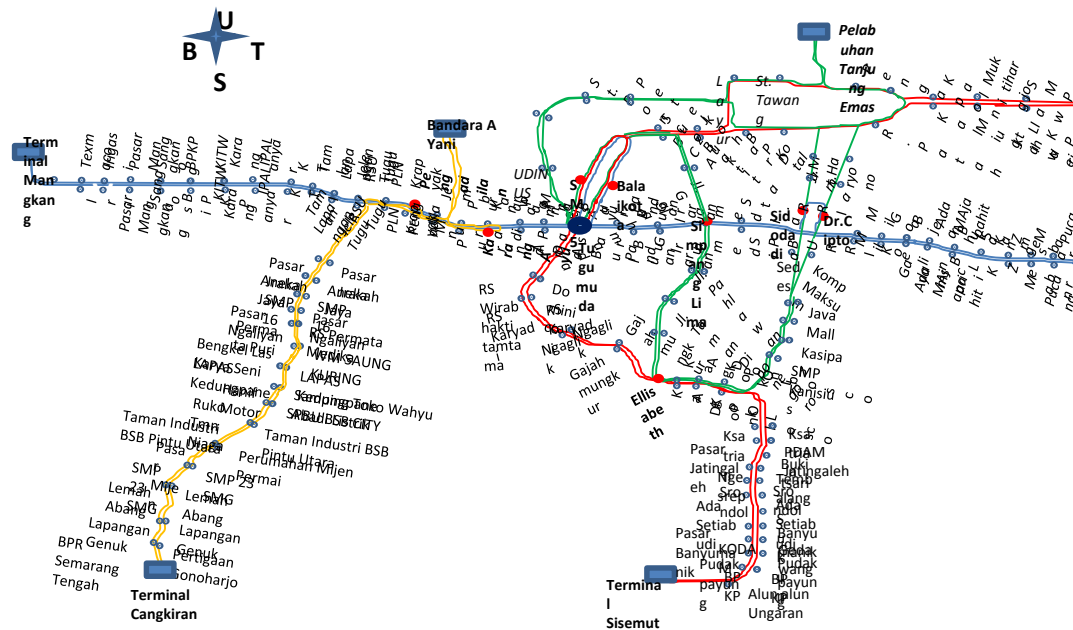


Gender Analysis



Gender assessment on Adaptation, transportation, and streetlight

# Outputs



- **FROM:** improper buses, no schedule, no shelter, dark bus stop, women feel insecure
- **TO:** comfortable buses with semi-BRT system, four corridors, with schedule, good shelters, bus stop in open area with good illumination, women feel secure.
- Women get better access for transportation, more people left private vehicle, save GHG emissions

Year	Bus (Unit)	Passengers	CO2e reduction (Ton)
2010	16	3,187,200	3,587.34
2011	16	3,187,200	3,587.34
2012	36	7,171,200	7,174.68
2013	41	8,167,200	8,203.10
2014	78	13,809,600	14,472.56
2015	78	13,809,600	14,472.56


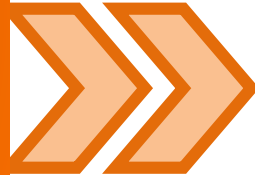
# Lessons

1. **Women have higher dependency to public transportation than men because their less access to private transportation moda.**
2. **Good sustainable urban mobility considers the need of the users (Women concern on illumination, safe driving, secure area of bus stop)**
3. **Mitigation with gender sensitivity gives multiple impacts both for climate and gender**
4. **Women are foster as green mobility promotor**







# Transfer




Find out key category of Green House Gas source to develop an effective mitigation action



Disincentive policies for private car such as parking fare and road pricing are considered to apply



Subsidy for competitive fare is needed to encourage people shifting their private moda to BRT



Involve Women for decision making and Do gender assessment to make sure climate action doesn't worse gender inequality

Thank you 😊

