

# Green Social District

Changing a car park in a public park, a playground and an urban-gardening area together with residents, initiatives and public administration



1999

2015



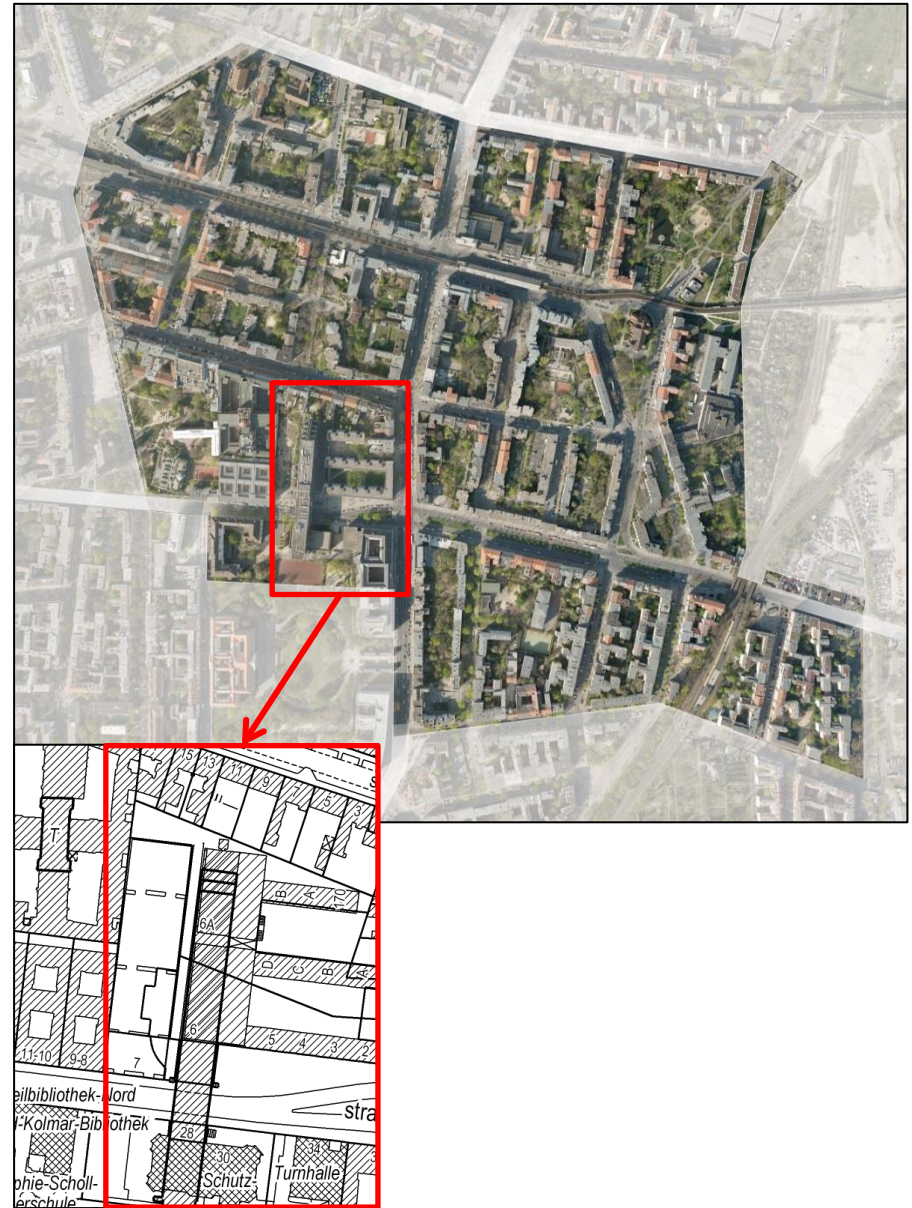
Corinna Lippert, coordinator

Neighbourhood Management Schoeneberg North  
City district Tempelhof-Schoeneberg of Berlin

## 1 Starting point

### Neighbourhood management area Schoeneberg North

- an inner city district of Berlin
- few public parks, outdoor sports facilities and green public spaces
- 17.733 people live in the area, 10% in “Pallasseum”, a large housing estate built in 1976 near Pallas Park
- 64 % residents with migration background
- 16,5% younger than 18 years
- 33 % depend on transfer income
- 8,4 % unemployed
- 1999, Pallas Park be a public parking area, shaped like a street canyon between “Pallasseum” housing estate and beginning of C20 tenements
- litter, vandalism and drug abuse notorious
- big challenge: creating a public park with neighbours' participation and social control





## Socially Integrative City

- Since 1999: area promoted by urban development program “Socially Integrative City”, cofunded by EU, Germany and the city of Berlin, an intervention program to support disadvantaged neighbourhoods
- A local Neighbourhood Management Team (NM) was set up: networking and participation of residents, local agents, housing associations, schools, local companies, social institutions and community centers
- Voluntary work of active residents essential, council of residents decides which projects are to be realized
- Spheres of activity: neighbourhood & integration, healthcare & violence prevention, children’s education & work with parents, local economy, image & identification and construction of public spaces, playgrounds and social institutions





-   Deutsche Umwelthilfe
- AUSZEICHNUNG**
- Im Rahmen des Projekts „Grünflächen in der Sozialen Stadt“  
der Deutschen Umwelthilfe e.V. erhält der
- Schöneberger Norden, Berlin**
- die Auszeichnung
- „Grün-Soziales Modellquartier 2016“**
- Der beteiligungsorientierte Quartiersansatz in der Entwicklung von Grün- und Freizeitanlagen erzeugt eine vitale und inklusive Nachbarschaft, schafft naturnahe Flächen zum Erhalt der städtischen Biodiversität, fördert Naturerfahrung und berücksichtigt gesundheitliche Aspekte.
- 
- Harald Kachub*  
Prof. Dr. Harald Kachub  
Kommunikation, Marketing, Nachhaltigkeit & K
- Das Projekt wurde gefördert von:
-   



### 3 Approach

#### Tools

- Planning workshops with adults, young people and children
- Planning workshops with Turkish and Kurdish women
- Participation project with neighbours to create a garden association
- Gardening workshops
- Multi-cultural festivities every year including art, culture, dance, music, poetry, theatre, food & drink (no alcohol!), art projects with children and teenagers
- A theatre project with Muslim, Jewish and Christian young people
- Herb gardening with trainee chefs
- Agreements between public & housing administration and garden association
- Public relations (website, public events, press)
- Public prevention council
- Awards for voluntary work

#### Participants

- Everyone welcome
- Specific groups like children, teenagers and mothers
- Turkish and Kurdish mothers
- Local social and educational institutions, e.g. a training school for chefs
- Coordinating committee – NM team



## 4 Outputs

### Benefits and results

- ✓ A public park with playgrounds and urban gardening spaces
- ✓ A groundwater well
- ✓ An association doing gardening work in the park and exerting social control
- ✓ Contracts with public and housing administration
- ✓ Festivities every year

- 
- Growing identification, more satisfaction with living in the area and greater social control
  - Stable, active neighbourhood
  - Sustainability of the project

### Remaining tasks

#### intensified cross-cultural communication and understanding

- between German and Turkish or Arabian neighbours
- between young and old people
- between women and men



## What are the main lessons learnt ?

- Capital investment needed to build and maintain parks, meeting points and employ skilled staff
- Neighbours need to be motivated to do voluntary work and take on responsibility for their environment.
- Networking with partners essential
- Cooperation of administrative departments required
- Best practice projects encourage imitation effects.

## Open questions ?

- What will happen if administration retreats – no more money, no more personnel resources?
- Who will do trouble-shooting resulting from conflicting interests between
  - people of different cultures
  - refugees and residents
  - people of different ages
  - women and men





## Creating structures

- Cooperation of different departments, e.g. youth department, landscaping and urban development departments
- Cooperation of local departments, NGOs, different social institutions and other partners
- Finding persons or groups taking responsibility



## How to transfer this practice to another place?



- Explore challenges and problems
- Identify funding opportunities
- Activate and mobilise neighbours and partners
- Come together – meet with everyone – form small groups according to different needs and conditions (religion, age, gender, origin)
- Talk about voluntary work and appreciate it



## 7 Who is who

### Participant institutions

- NM-Team:  
AG SPAS e.V.; [QM@AG-SPAS.de](mailto:QM@AG-SPAS.de)
- Gardeners institution:  
netzwerk stadtraum kultur e.V.;  
[stadtraumkultur@googlemail.com](mailto:stadtraumkultur@googlemail.com)
- Gardeners institution:  
PallasGärten e.V.; [pallasgaerten@gmx.de](mailto:pallasgaerten@gmx.de)
- Housing Association: Pallasseum Wohnbauten KG;  
[www.pallasseum.de](http://www.pallasseum.de)
- Urban development department:  
Bezirksamt Tempelhof-Schöneberg  
Abt. Stadtentwicklung und Bauen  
Quartiersmanagement  
[corinna.lippert@ba-ts.berlin.de](mailto:corinna.lippert@ba-ts.berlin.de)

### Photographer

- Susanne Wolkenhauer;
- Felix Zimmermann
- Gabriele Springfeld
- Alexander Meyer, AG SPAS e.V.
- [www.schoeneberger-norden.de](http://www.schoeneberger-norden.de)