

Building Community Leadership Capacity for Disaster Risk Reduction

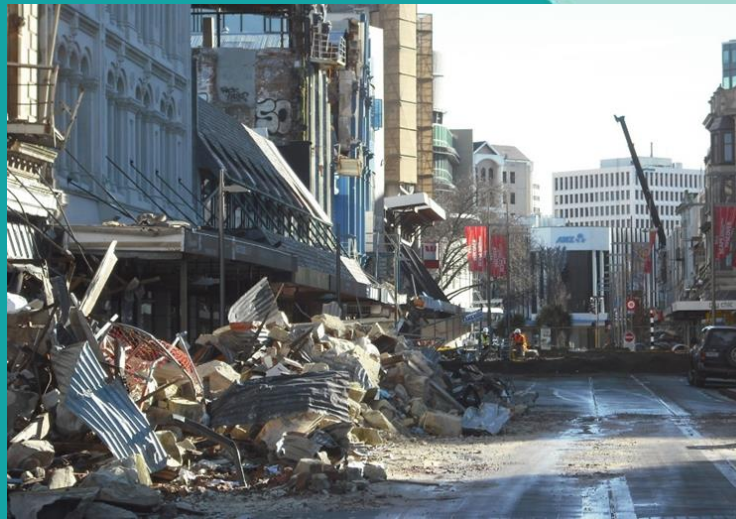


Councillor Sara Templeton

Christchurch City Council

Challenge 1:

Community and Council Partnerships

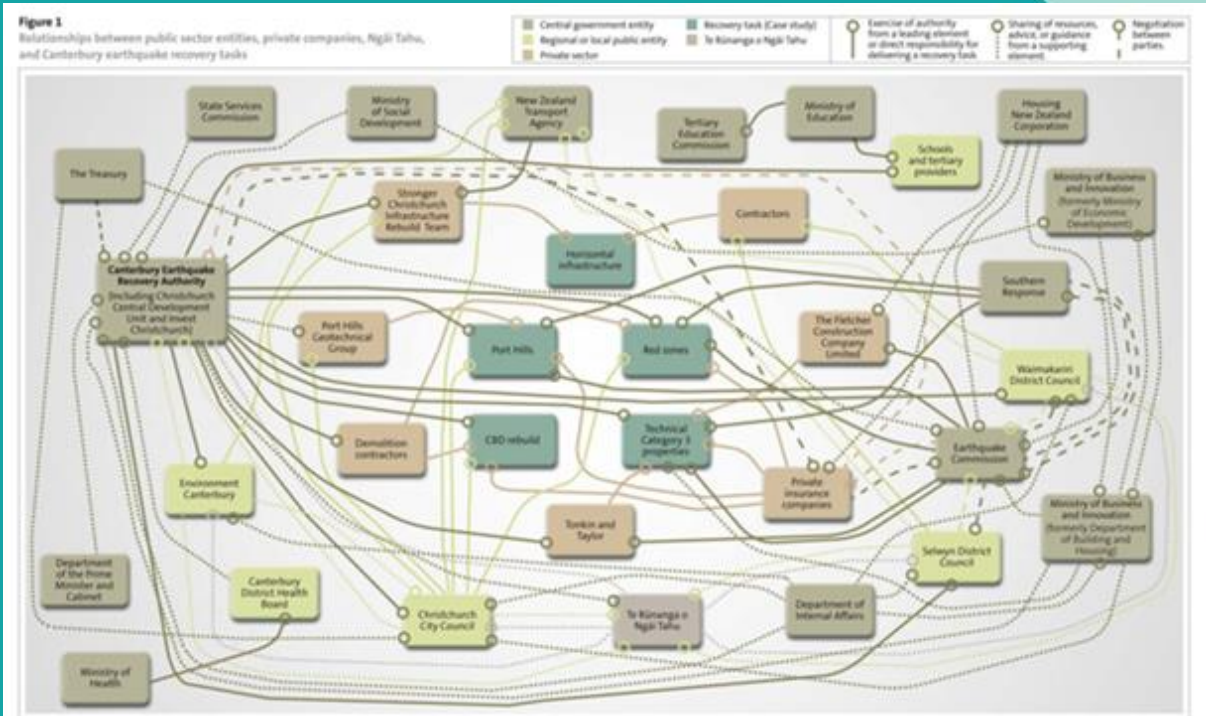


Challenge 2:

Community Leadership capacity and burnout



Institutional Setting



Christchurch Civil Defence Structure

NATIONAL - Ministry

The National CDEM Plan 2015
Civil Defence Emergency Management Act 2002

Ministry of Civil Defence &
Emergency Management

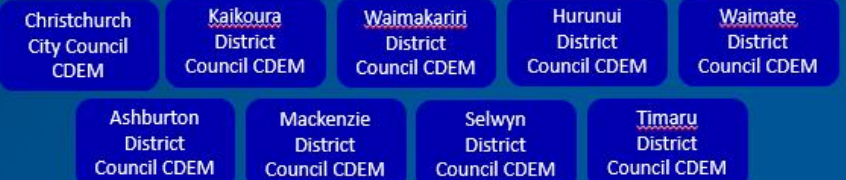
REGIONAL - ECAN

The Canterbury CDEM Group Plan

Canterbury CDEM Group
Emergency Management
Office

LOCAL - Council

Christchurch CDEM
Arrangements

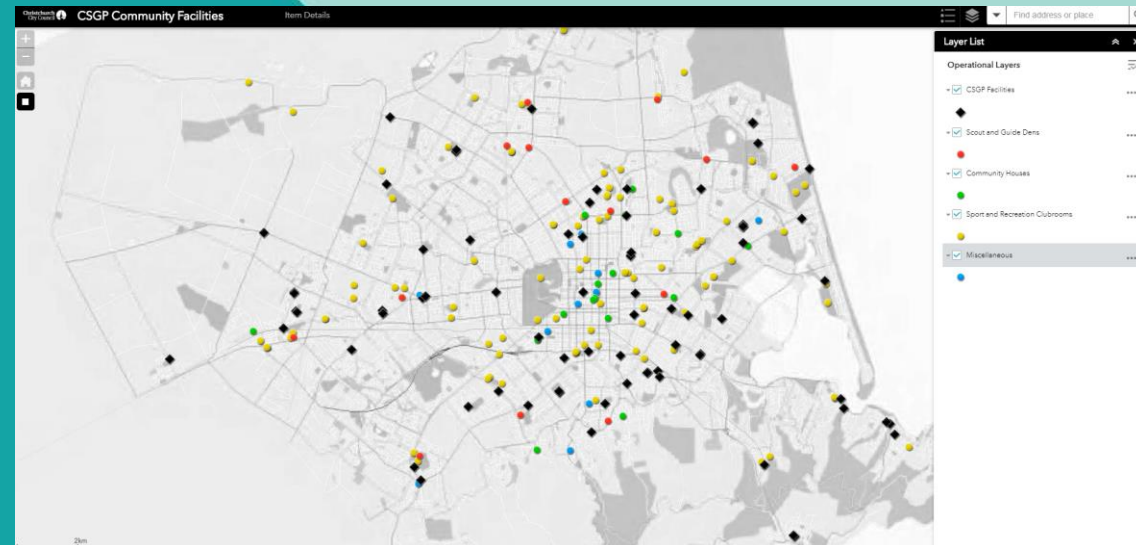


National Civil Defence structure

Agencies operating in post-earthquake
Christchurch

Christchurch City Council

- Community facilities network
- Community Boards
- Community Governance teams
- Strengthening Communities Funding



Community Resilience Plans

- Existing community groups
- Ability and freedom to design their own plans
- Enabled by community governance teams
- Linked to Civil defence at a local level



B.E.R.P.

Belfast Emergency Response Plan

BELFAST EMERGENCY RESPONSE PLAN

Administered by:

- Belfast Community Network
- Belfast Bowling Club
- Belfast Rugby Club (Venue 1)
- Belfast Primary School (Venue 2)
- Northwood Residents' Association
- Belfast Residents' Association
- Belfast Bowling Club
- Rotary Club of Belfast Kaiapoi
- Belfast Medical Centre
- Belfast Pharmacy
- Belfast Salvation Army
- Christchurch City Council



Community Resilience Plans

Outcomes include:

- Multiple community resilience plans
- Stronger relationships
- Ongoing support from community governance teams (who meet 6monthly)
- All of this still in infancy – need to evaluate and make sustainable



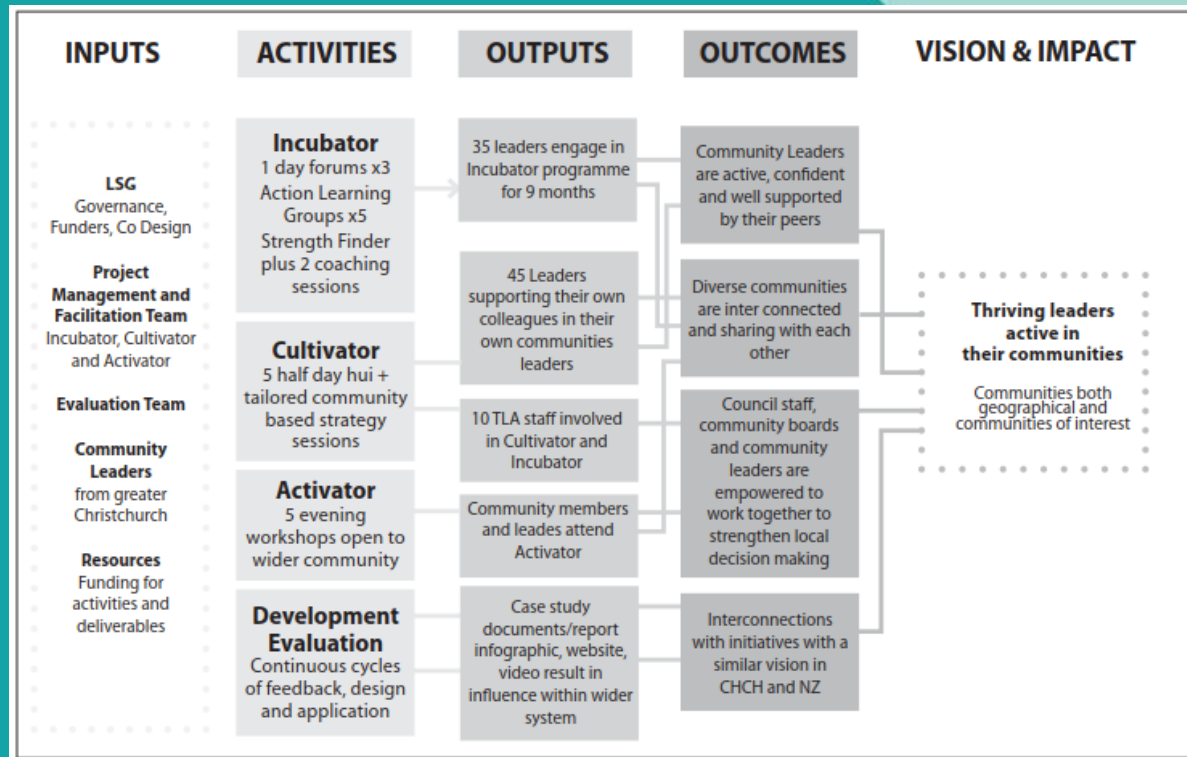
LinC programme: Leaders in Communities

The key principle: People thrive in communities, which thrive with leadership, who thrive with support.

A multi-stakeholder governance group in charge of: Designing, funding, resourcing, delivering and evaluating projects and programmes



LinC Outcomes





Ministry of Fun Waterslide

To connect the community with an afternoon waterslide event at the local park for several hours with 2 x 30m long waterslides. Run 5 - 6 times each summer.




HEATHCOTE CHRISTCHURCH NEW ZEALAND


Core Group > Participants
5 - 1000+


Start
2013


Timeframe
SUMMER


Support
\$800

Leaders Involved



Callum Templeton

Key Success Factors

- 1 Personal Contact with core helpers.
- 2 Using community networks to promote.
- 3 Promoting whole family involvement.
- 4 Proactive contact with potentially affected neighbours.

Learnings



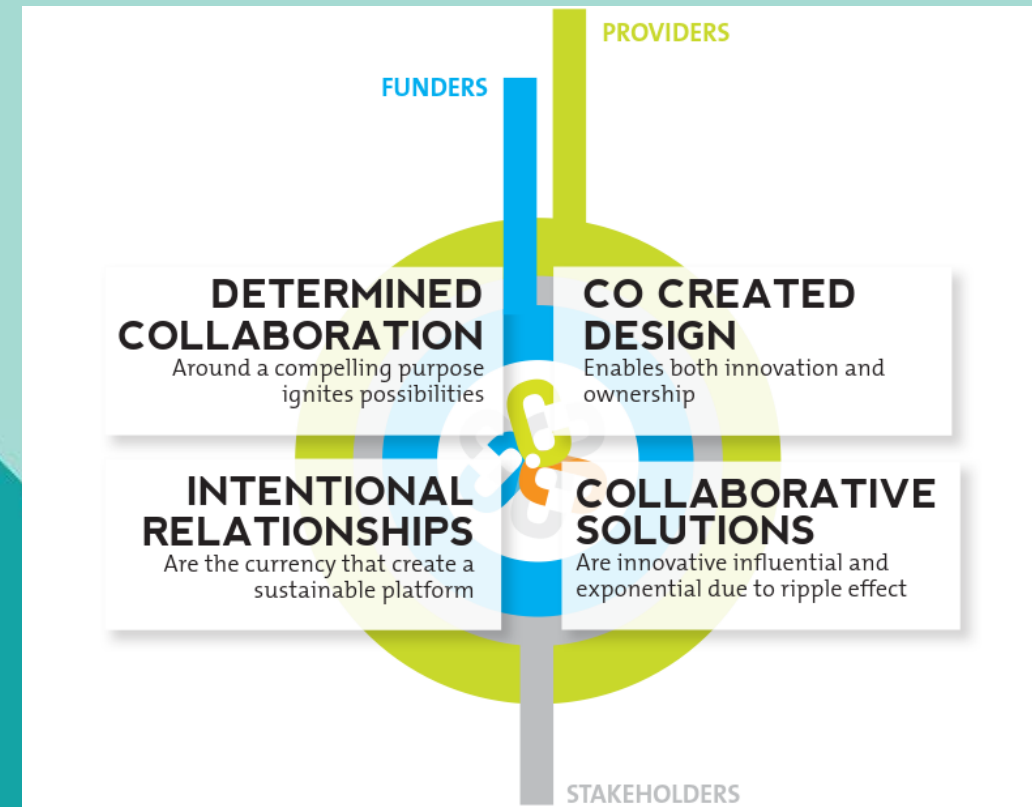
- 1 Make volunteers top priority
- 2 Be flexible as the weather doesn't always play ball.
- 3 Personal contact will help a project happen rather than an email or text.
- 4 Take a risk.
- 5 Start small and adapt as you go. It doesn't have to be perfect, just fun.

Learning the Lessons

- Catalyst or ignition point
- Co-designed approach
- Solutions and ownership
- Compromise driven by shared purpose
- Evaluation and responsiveness

“ We were all in the room for the same reason, putting political agendas aside and not needing to put our own stamp on the world...”

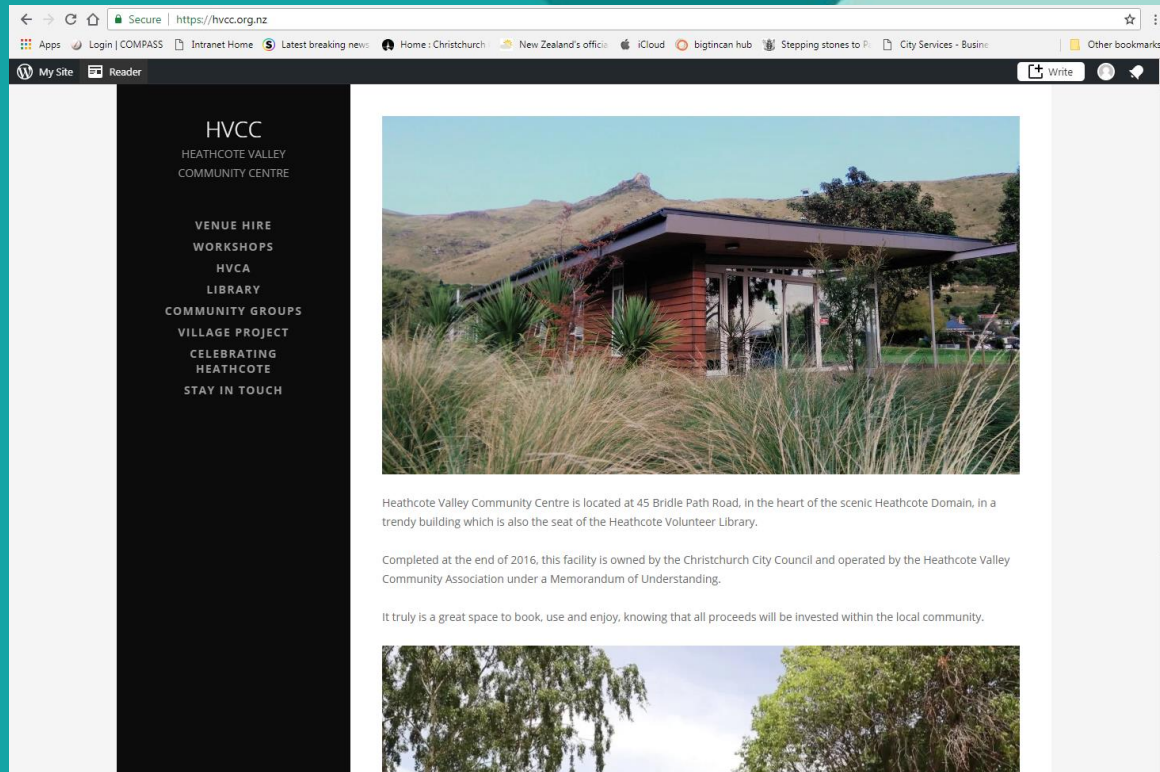
LSG



Getting Started

- Stocktake of the current situation – who, what, where?
- Continue building relationships and trust
- Allow for time and resources
- Good process leads to more effective and enduring outcomes





- Useful links:

www.lincproject.org.nz

www.ccc.govt.nz

www.hvcc.org.nz

www.100resilientcities.org/strategies/greater-christchurch/

Thank you