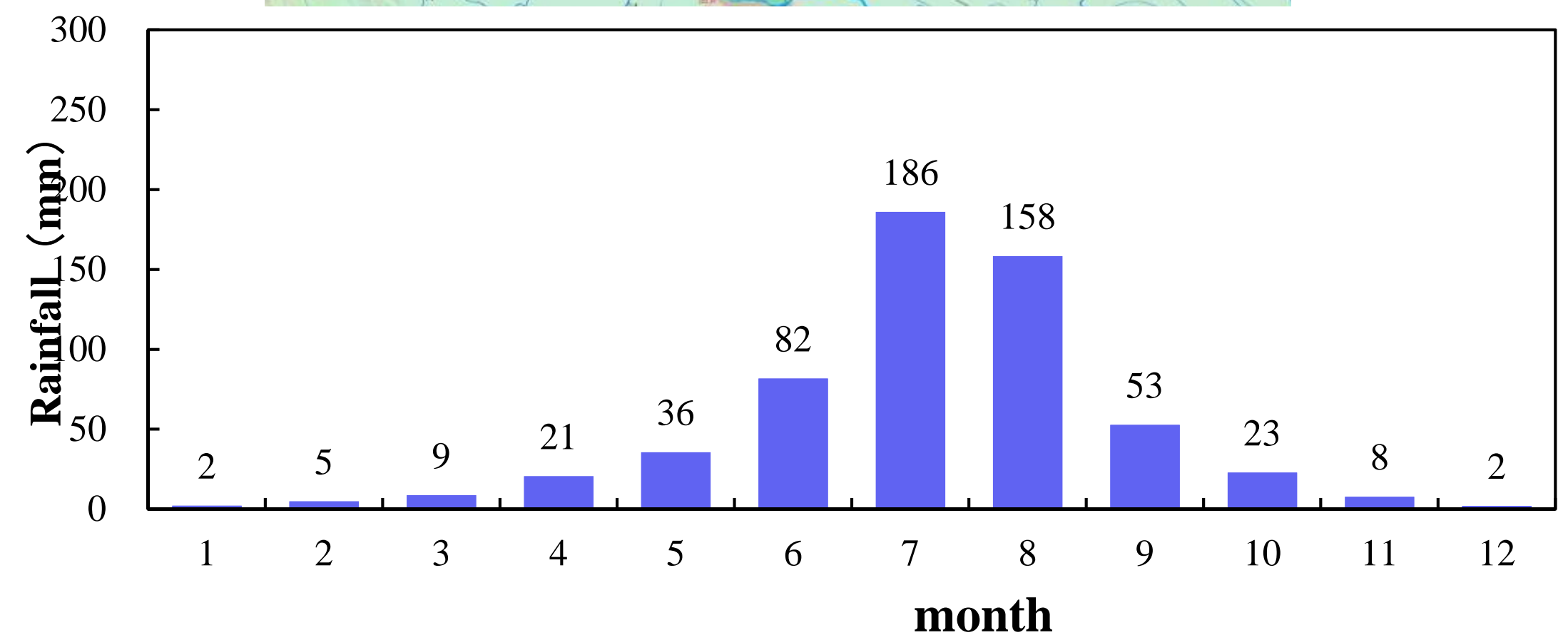
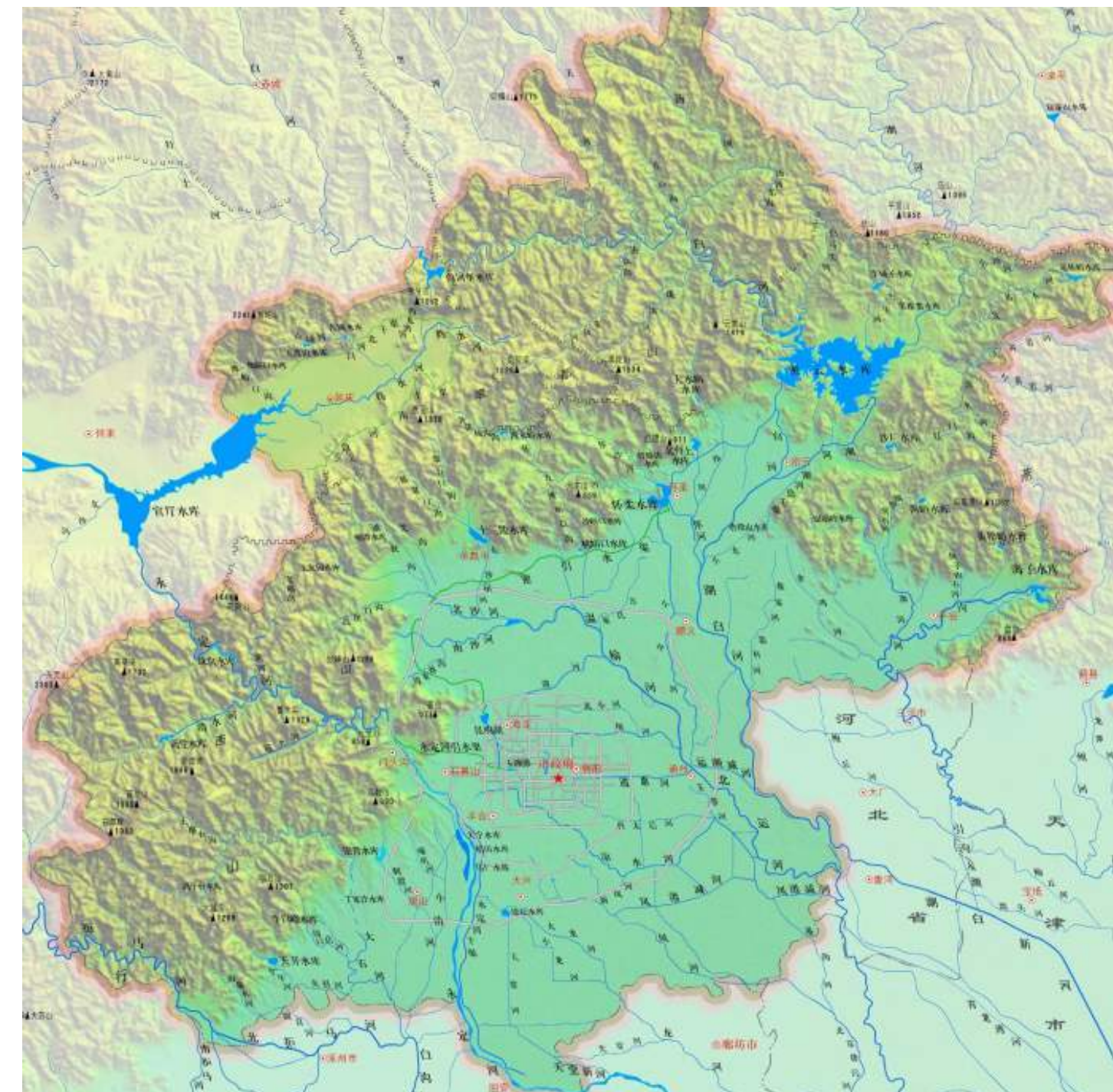


# Flood Characteristics In Beijing

## Rivers in Hai River Basin



## Map of Beijing

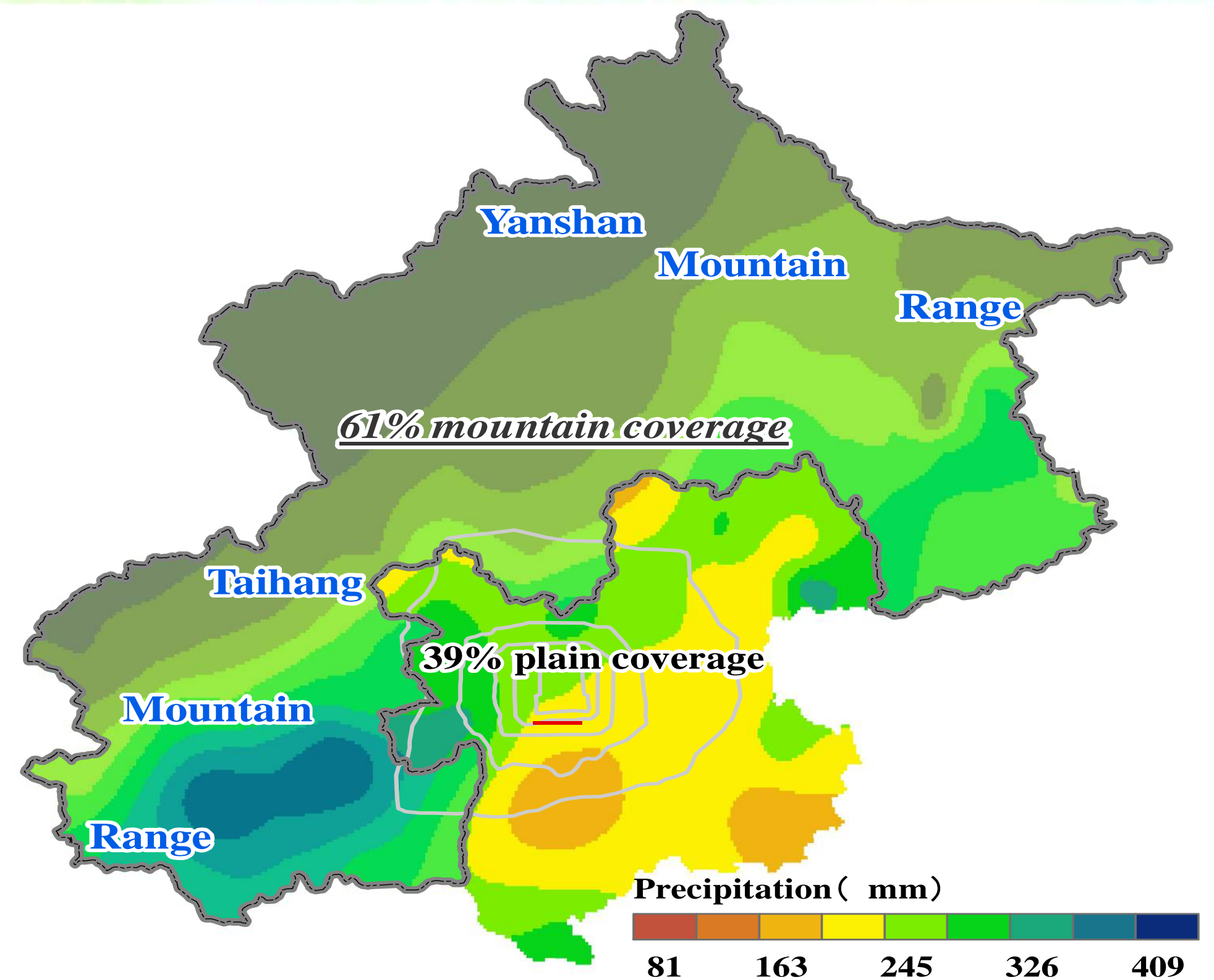


## Annual precipitation in Beijing



# Flood Risk

1. Basin floods
2. Urban cloudburst
3. Water logging



**Rainfall  
Distribution  
on July 21, 2012**







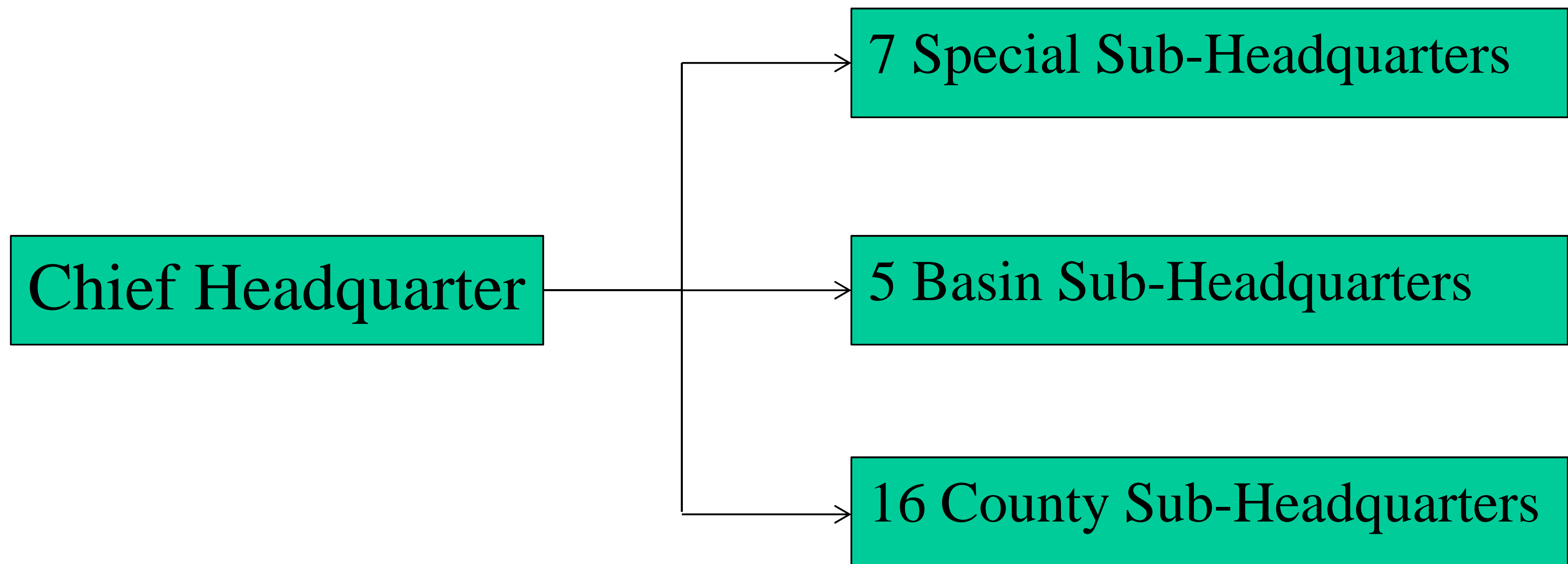
# Floodwater Retention

1. Storage capacity of 7 million m<sup>3</sup>, harvesting floods covering 27km<sup>2</sup>
2. Improving ecological landscape, adding new water surface area 10ha, green area 51ha.



# Lessons

1. The flood infrastructures lag far behind modernization
2. Need to improve the mechanism of emergency management and implementation of emergency predetermined plans



# Ongoing & Planning Works

