



ENVIRONMENTAL PROTECTION AND CONTROL DEPARTMENT

Difficulties, issues or problems encountered during implementation

- **Messy and insufficient legal regulations**
- **Insufficient number of employees**
- **Priorities of decision-makers**
- **Lack of coordination between stakeholders**
- **Difficulties experienced due to lack of similar projects in the past, which led to difficulties with obtaining permits and monitoring processes**
- **Conflicts between parties when creating a common language and interpreting the legislation**
- **This and similar issues caused to delays in the implementation of the project**

Framework Conditions of the Project



With a holistic waste management mentality and considering all implementations on the international level, we created our project to set a country-wide example with a feasible project.

We shaped our project by thoroughly examining the applicable law and contacting practitioners and academics. We contributed to improvement of limping aspects of the legislation through our studies.

During the selection of the project location, we conducted holistic studies in the project site regarding cadastre, planning, ownership status, institutional opinions, location selection of planned units, transportation, and infrastructure.

Based on our previous experience, we named our project by an integrated and new assessment of all processes within the scope of our waste management.

All these efforts resulted in implementations which are not mentioned, but desired and admired by the public. Thus, we contributed to the protection of the air quality and the environment.

Approach



We overcame difficulties which we encountered in the implementation stage through strong organizational and personal communication and comprehensive, convincing information meetings.

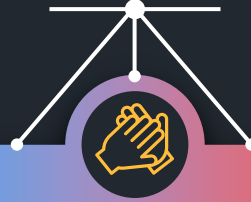
During the implementation, we solved all problems by tirelessly working on the layout plan and holding meetings within the framework of the project with all technical experts (Urban Planners, Architects, Environmental, Civil, Geodesy, Geophysics, Geology, Energy, Mechanical, Electrical, Electronics, and Agricultural Engineers).

Less
ons

While working on the project, we witnessed the importance of accurately identifying knowledgeable and experienced institutions, organizations, and practitioners and the necessity of learning from their knowledge and experiences.

Trans fer

Common aspects should be identified and diligently assessed so that our project can be applied in other regions as well. Participants of other projects can use our knowledge and experience in order to prevent loss of time.



THANK YOU

Alican BOZKURT
Head of Environmental
Protection and Control
Department