

# Catastrophe at the Edge – Challenges for delivering Sustainability Outcomes in a Sprawling Region

(Case Study of Malang, East Java)

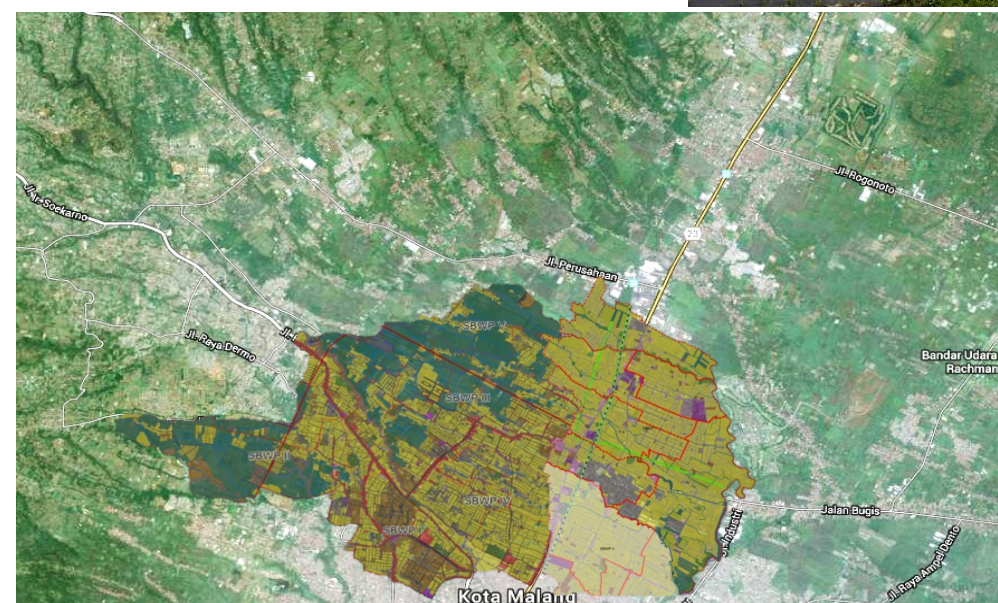
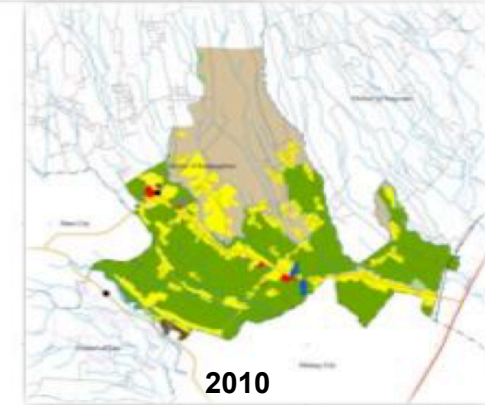
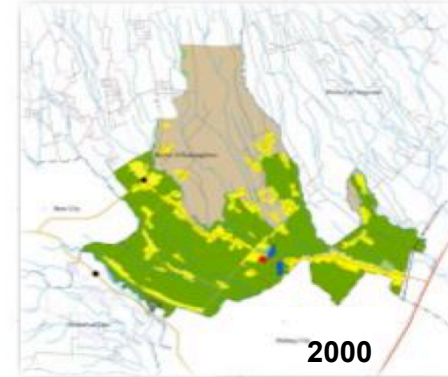
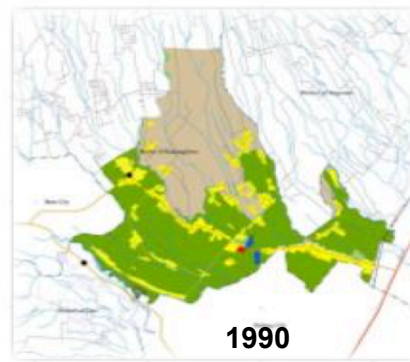


Dimas Wisnu Adrianto

Laboratory of Regional Development and Public  
Policy Studies

**The Department of Urban and Regional  
Planning, UNIVERSITAS BRAWIJAYA**

*d.adrianto@ub.ac.id*



- 14.6% of the region's production of paddy
- Main income for 69.42% households
- Residential growth at the edge between 2000-2010 reached 4.51% per annum



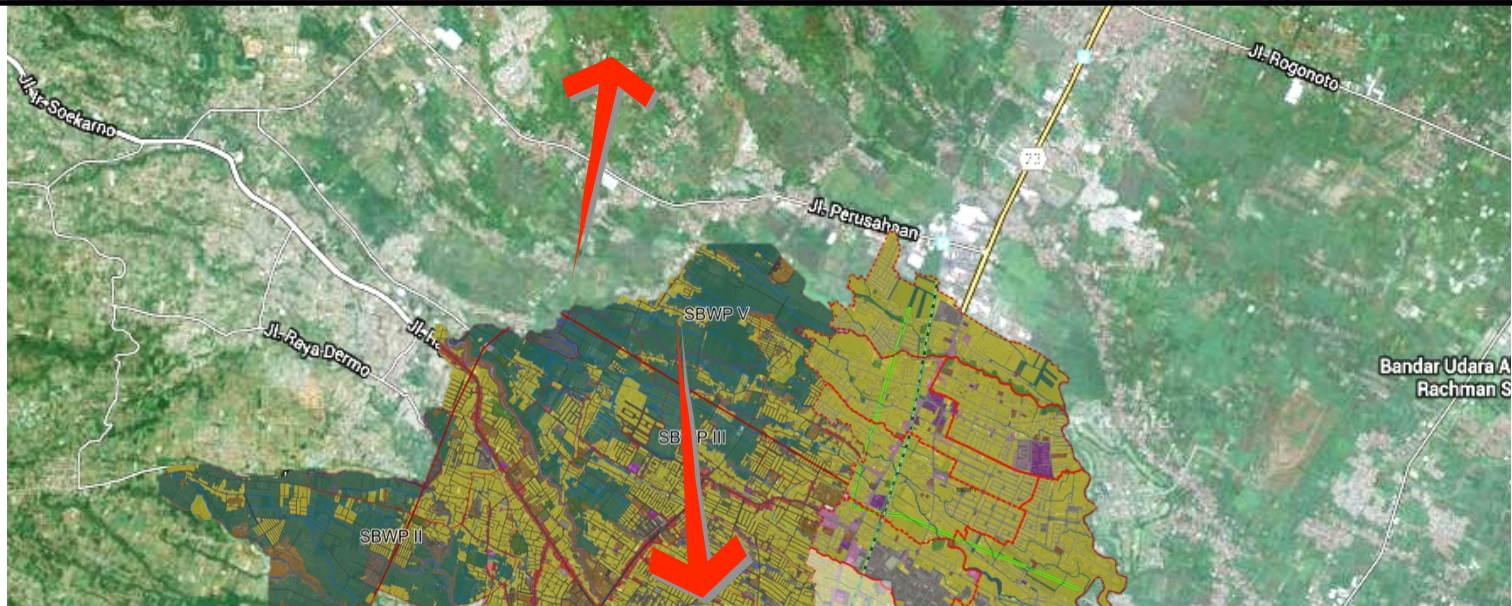
# Policy Conflict

## The Malang Regency Spatial Plan 2010-2030:

The need to preserve prominent life support systems and avoid the loss of prime agricultural parcels

## The Karangploso Sub-district Spatial Plan 2010-2030:

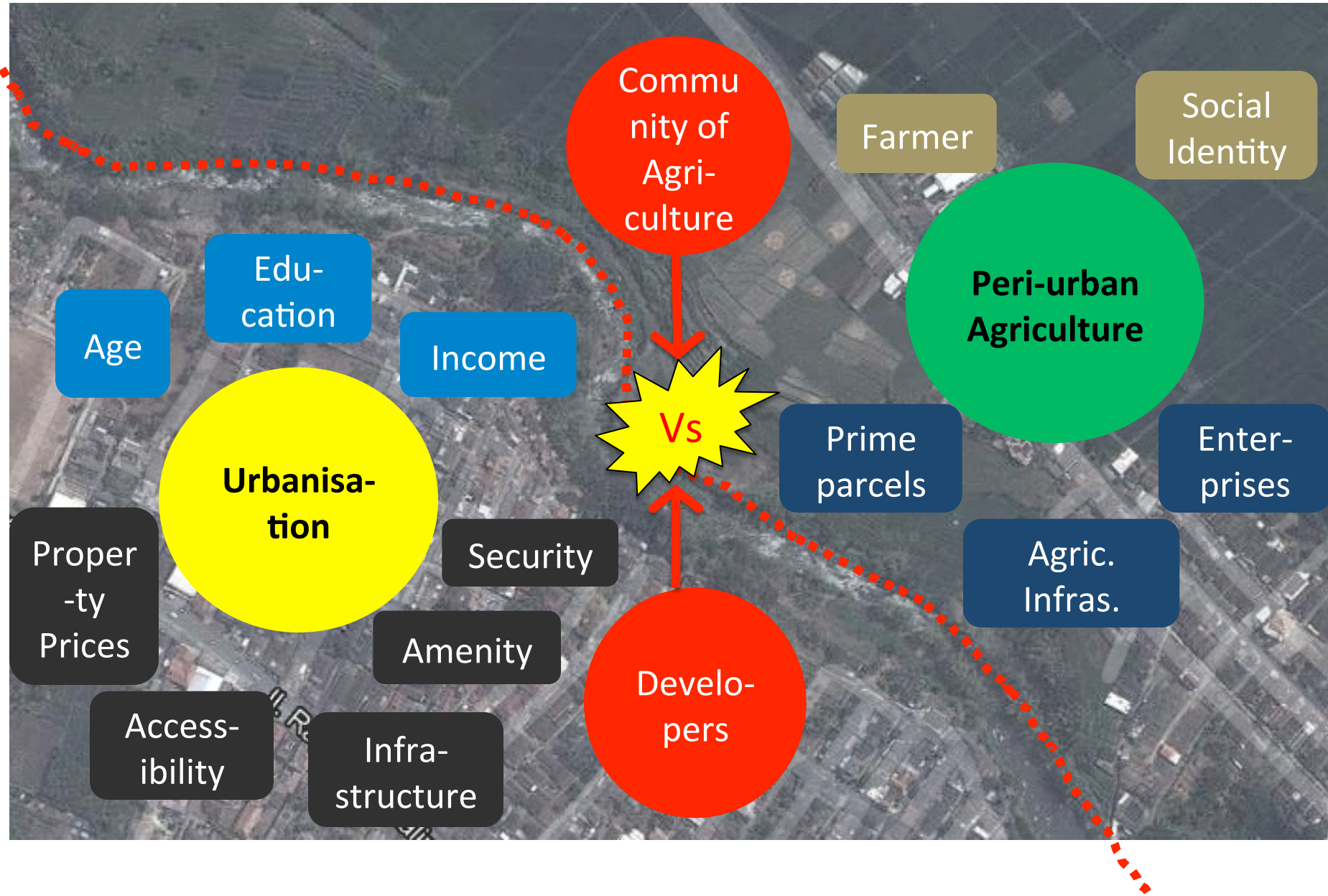
Spatial recommendation: Suburban housing, industrial estates



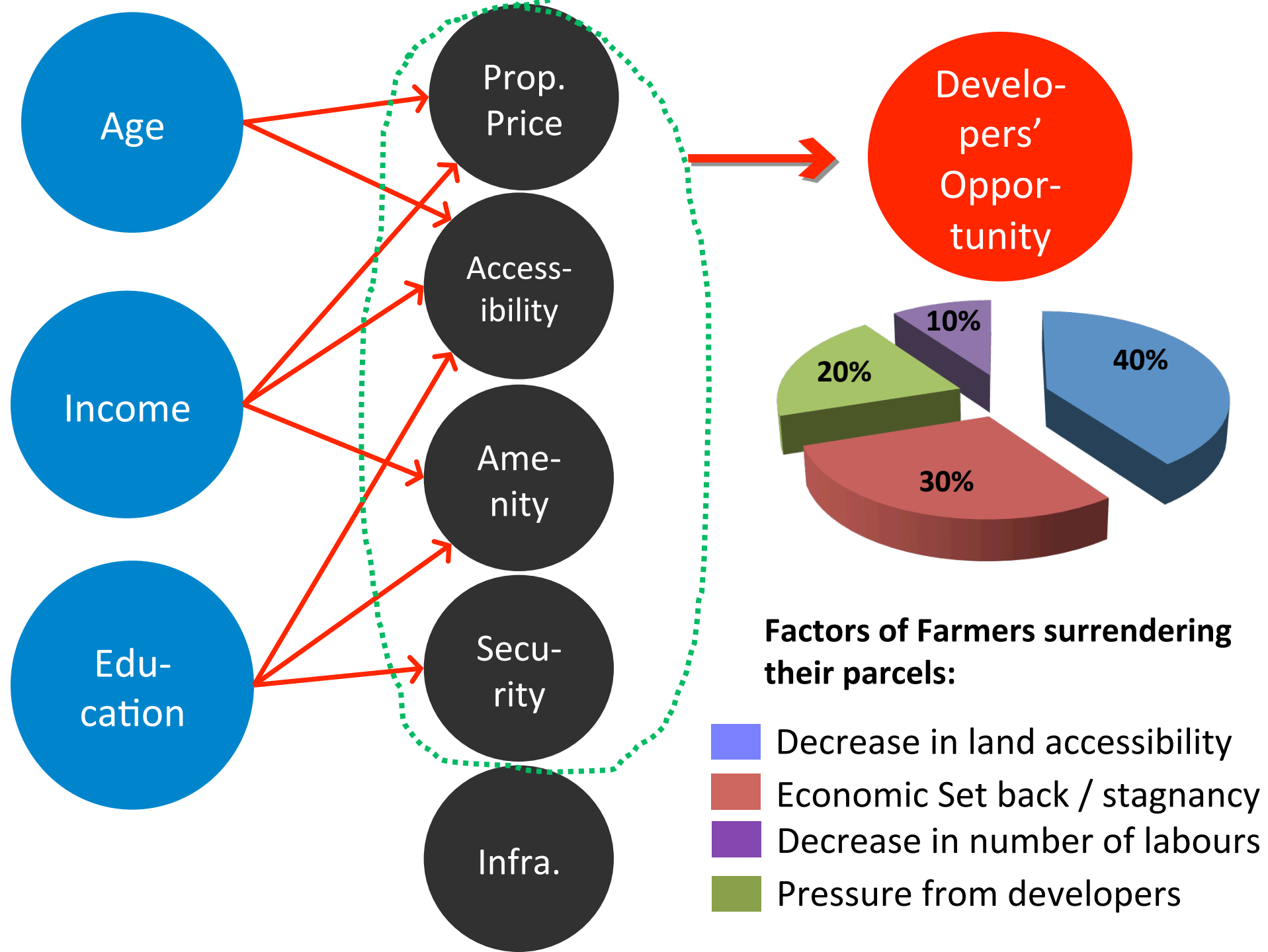
## The Malang Municipality Spatial Plan 2010-2030:

Allocate new housing development further to the northern areas

# Urban – Rural Disputes







# Counseling

## Sustainability Vs Sprawl

