

# From initial reception to regular integration management: caring for refugees in Osnabrueck

**Seda Rass-Turgut**

Head of the department for social services and  
commissioner for integration - City of Osnabrueck



YILMAZ AKYÜREK  
INTEGRATIONSPreis  
der Stadt Osnabrück



# Starting point

- ‚City of peace‘, long tradition in negotiating compromise and culture of peace.
- diverse population, 170.000 inhabitants, 30% of population have a migration history (approx. 50.000 persons), 50% of children aged under three have migration history.
- program of decentral housing und coordination of social work for refugees with NGO’s installed in 2013, updated in 2018.
- receiving 5.0000 migrants/refugees since 2014 posed challenges nonetheless.
- housing was and still is the most pressing issue, Osnabrueck does not have a municipal agency providing social housing
- current approach ‚integration from the beginning‘ does not reproduce mistakes made towards the „guest worker“ generation

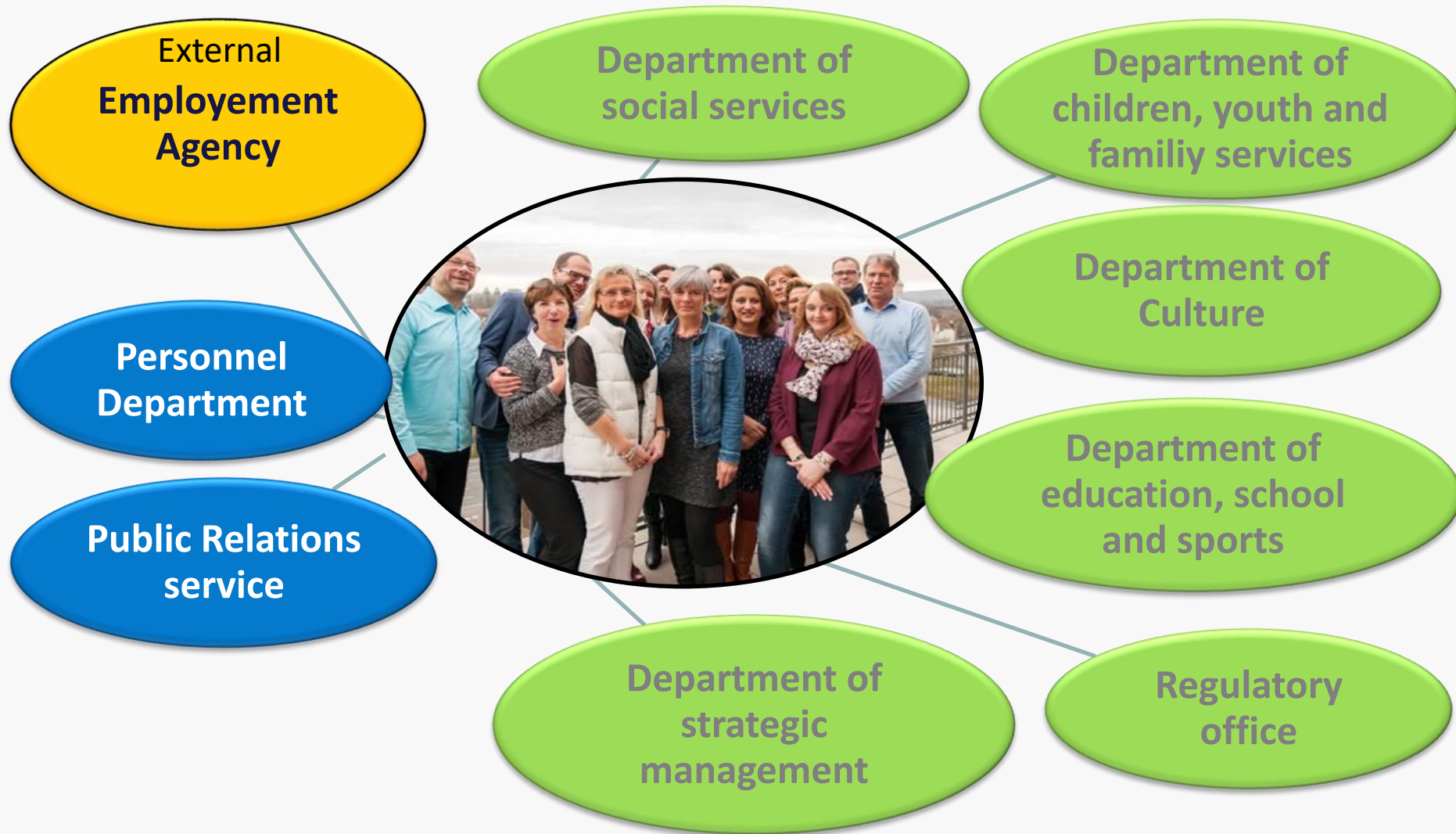
# Task Force Integration

- At the end of 2015 Mayor Wolfgang Griesert installed a Task Force Integration to link up all branches of administration and other organizations responsible for refugees and monitor progress. Representatives had meetings every other week, interval has now been moved to six weeks.
- Aims at determining needs of refugees, especially of children and women, exchanging information on projects and programmes and creating mutual integrated, comprehensive programmes.



*Further topics:* Housing, Language, Education, Work, daily life in Germany, Culture and Health.

# Task Force Integration



process orientated

interdisciplinary

# Central Control Circuits





# Promotion fund „Your district and You“

Funding up to 5.000 € can be applied for to support sport clubs, round table, volunteers, culture clubs, mosques ... for meetings, events, mentoring for kids, trips, excursions, bicycle courses for women, etc.



# Municipal Integration Services

- Managing and Monitoring Integration
- Administrative Office of the migration advisory board & Network Integration with NGOs
- Coordinating Integration policies and measures
- Counseling services for all migrants
- Social work for refugees
- Civic Volunteer Agency

