

INTERNATIONAL COMMUNITY OF PRACTICE
FOR SUSTAINABLE URBAN DEVELOPMENT

Municipal Context of Integration of Refugees in Germany

Istanbul, Turkey 08-11-2018



Municipal Competences and Municipal Services for Refugees

FEDERAL STATE OF GERMANY

Principle
Decision-making;
Asylum process
(Distribution Key)

Assigns Refugees

STATE

- Initial reception
- Registration (State)
- Supply (State)
- Identification (State)
- Language course (VHS)

Financial Support

Assigns Refugees

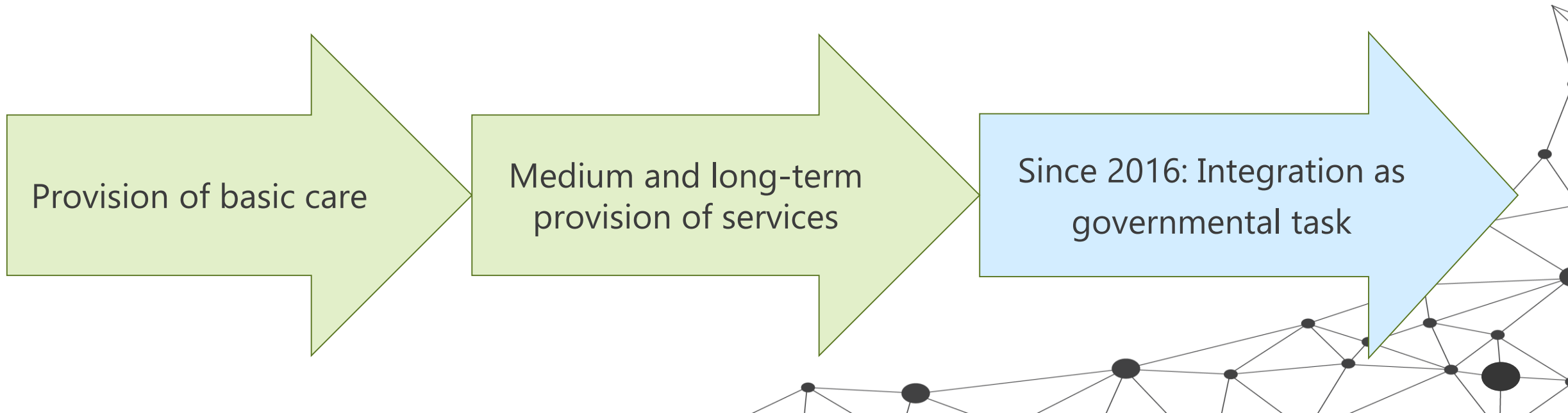
MUNICIPALITY

- Housing and provision of services for subsistence
- Support during asylum process
- Integration of children into day-care centers and schools

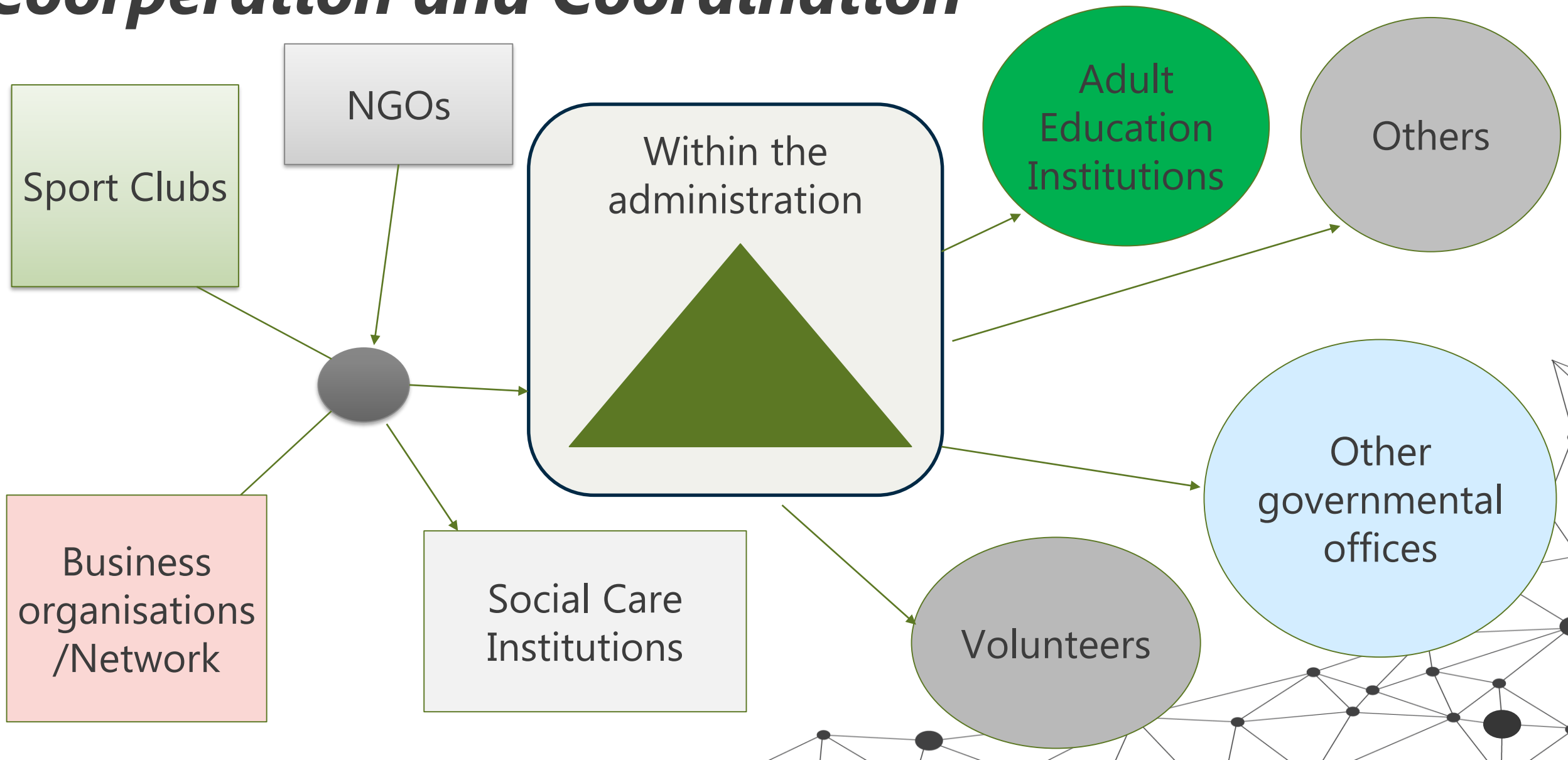
Municipal Tasks and Obligations

Tasks

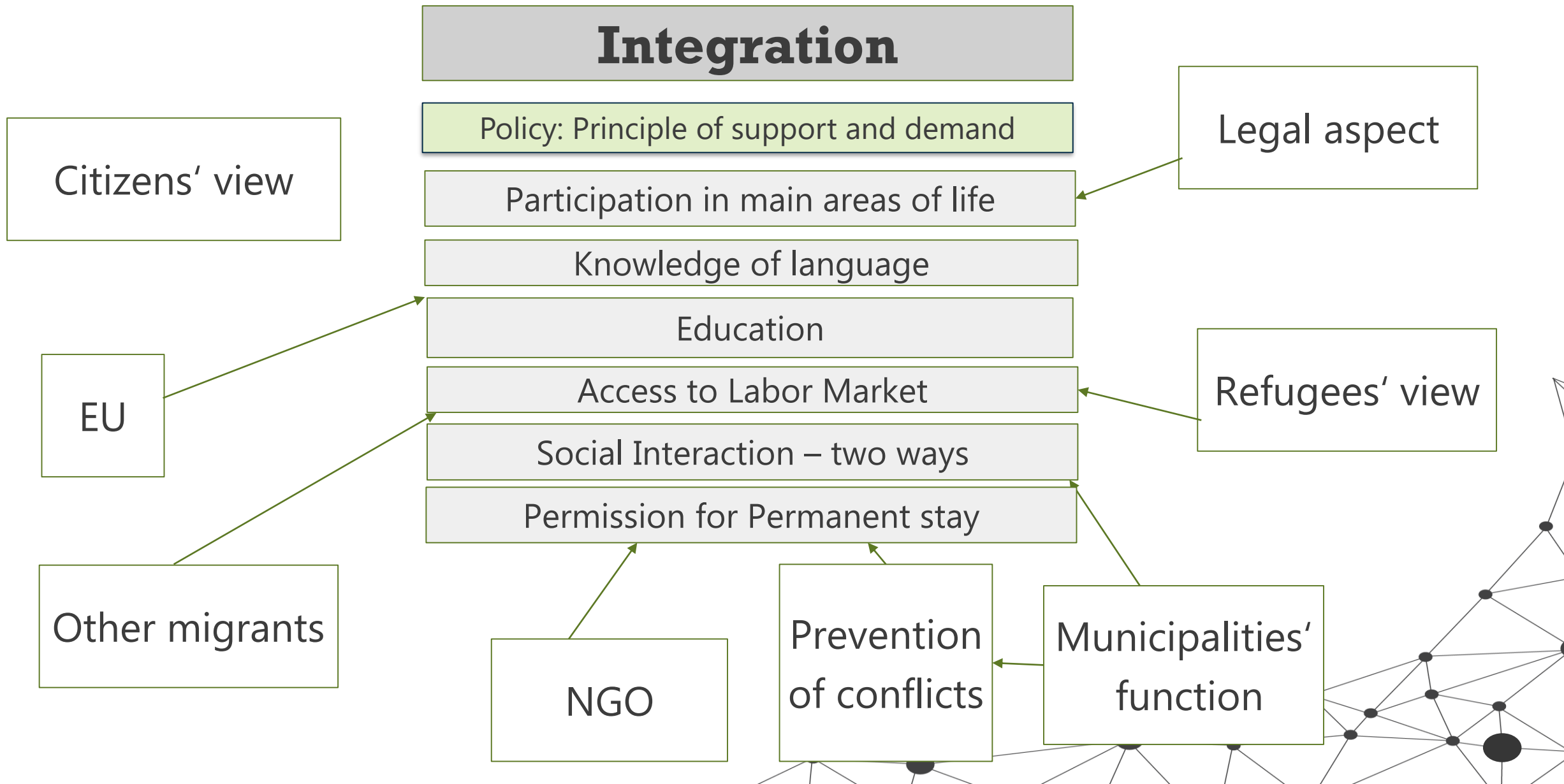
- | | |
|-----------------------------|-----------------------------|
| • Accomodation / Housing | • Child care |
| • Food & Household utensils | • Youth programs, Education |
| • Health | • Labor market |
| • Mobility | • Security |



Municipalities Mobilizing Ressources through Cooperation and Coordination



What is the Meaning of Integration?



Achievements, Challenges and Opportunities

Achievements:

- Management of municipal reception and services for high number of new arriving refugees in 2015 and later
- Strong cooperation among different stakeholders
- Creative solutions to cover municipal tasks
- Coordinating role to use other resources for municipal tasks and other services
- Strong engagement of citizens and organized civic society

Challenges:

- Social interaction and integration in city societies
- Long-term integration strategies and policies
- Integration of refugees into the labor market
- Professional training for refugees in needed professions
- Long-term integration of refugees' children into school system
- Language-learning for professional needs

Opportunities:

- Needs of certain professionals in the labor market
- High motivation of refugees to work
- Age structure of refugees
- Engagement of volunteers in services for refugees
- Learning from good practices
- Guidelines and lobbying of municipal associations

Flüchtlinge vor Ort in die Gesellschaft integrieren

Anforderungen für Kommunen
und Lösungsansätze

Beiträge zur Stadtpolitik

AACHEN | AALEN | AMBERG | ANNABERG-BUCHHOLZ | ANSBACH | ASCHAFFENBURG | AUERBACH/
VOGTLAND | AUGSBURG | BAD KREUZNACH | BAD REICHENHALL | BADEN-BADEN | BAMBERG
BAUTZEN | BAYREUTH | BERLIN | BIBERACH AN DER RIB | BIELEFELD | BOCHOLT
BOCHUM | BONN | BOTTRUP | BRANDENBURG AN DER HAVEL | BRAUNSCHWEIG | BREMEN
BREMERHAVEN | CASTROP-RAUXEL | CELLE | CHEMNITZ | COBURG | COTTBUS | DARMSTADT
DELITZSCH | DELMENHORST | DESSAU-ROSSLAU | DORTMUND | DRESDEN | DUISBURG
DÜREN | DÜSSELDORF | EISENACH | EISENHÜTTENSTADT | EMDEN | ERFURT | ERKNER
ERLANGEN | ESSEN | ESSLINGEN AM NECKAR | FALKENSEE | FILDERSTADT | FINSTERWALDE
FLENSBURG | FORST (LAUSITZ) | FRANKENTHAL (PFALZ) | FRANKFURT (ODER) | FRANKFURT AM MAIN
FREIBERG | FREIBURG IM BREISGAU | FRIEDRICHSHAFEN | FULDA | FÜRTH | GELSENKIRCHEN
GERA | GIEßEN | GLADBECK | GLAUCHAU | GOSLAR | GOTHA | GÖTTINGEN | GRÄFELFING
GRIEFSWALD | HAGEN | HALLE (SAALE) | HAMBURG | HAMELN | HAMM | HANAU | HANNOVER
HEIDELBERG | HEIDENHEIM AN DER BRENZ | HEILBRONN | HENNIGSDORF | HERFORD
HERNE | HILDESHEIM | HOF | HOHEN NEUENDORF | HOYERSWERDA | INGOLSTADT | ISERLOHN
JENA | KAISERSLAUTERN | KAMENZ | KARLSRUHE | KASSEL | KAUFBEUREN | KEMPTEN (ALLGÄU)
KIEL | KOBLENZ | KÖLN | KONSTANZ | KREFELD | LANDAU IN DER PFALZ | LANDSBERG
AM LECH | LANDSHUT | LAUCHHAMMER | LEINEFELDE-WORBIS | LEIPZIG | LEVERKUSEN | LIMBACH-
OBERFROHNA | LINDAU (BODENSEE) | LÖRRACH | LÜBECK | LUDWIGSBURG | LUDWIGSHAFEN
LÜNEBURG | MAGDEBURG | MAINZ | MANNHEIM | MARBURG | MEMMINGEN | MERSEBURG
(SAALE) | MÖNCHENGLADBACH | MÜHLHAUSEN | MÜLHEIM AN DER RUHR | MÜNCHEN
MÜNSTER | NEU-ULM | NEUBRANDENBURG | NEUENHAGEN BEI BERLIN | NEUMÜNSTER
NEURUPPIN | NEUSS | NEUSTADT AM RÜBENBERGE | NEUSTADT AN DER WEINSTRASSE
NEUSTADT BEI COBURG | NEUWIED | NORDHAUSEN | NÜRNBERG | NÜRTINGEN | OBERHAUSEN
OFFENBACH AM MAIN | OFFENBURG | OLDENBURG | OSNABRÜCK | PASSAU | PFORZHEIM
PIRMASENS | PIRNA | PLAUE | POTSDAM | QUEDLINBURG | RECKLINGHAUSEN | REGENSBURG
REMSCHIED | REUTLINGEN | RIESA | ROSENHEIM | ROSTOCK | SAARBRÜCKEN | SALZGITTER
SASSNITZ | SCHWABACH | SCHWÄBISCH GEMÜND | SCHWEDT/ODER | SCHWEINFURT
SCHWERIN | SIEGEN | SINDELFINGEN | SOLINGEN | SPEYER | STENDAL | STRAUBING
STUTTGART | SUHL | TAUCHA | TELTOW | TETEROW | TRAUNSTEIN | TRIER | TÜBINGEN
ULM | VELTEN | VIERSEN | VILLINGEN-SCHWENNINGEN | VÖLKLINGEN | WEIDEN IN DER OBERPFALZ
WEIMAR | WIESBADEN | WILHELMSHAVEN | WISMAR | WITTEN | WITTENBERG | WOLFENBÜTTEL
WOLFSBURG | WOLGAST | WORMS | WUPPERTAL | WÜRZBURG | ZWEIBRÜCKEN | ZWICKAU

Example for Support Document of
German Association of Cities:

- Publication of Good Practices
- Support brochure on Integration of Refugees into Local Society

<http://www.staedtetag.de/fachinformationen/integration/079617/index.html>

Thank you for your attention!

