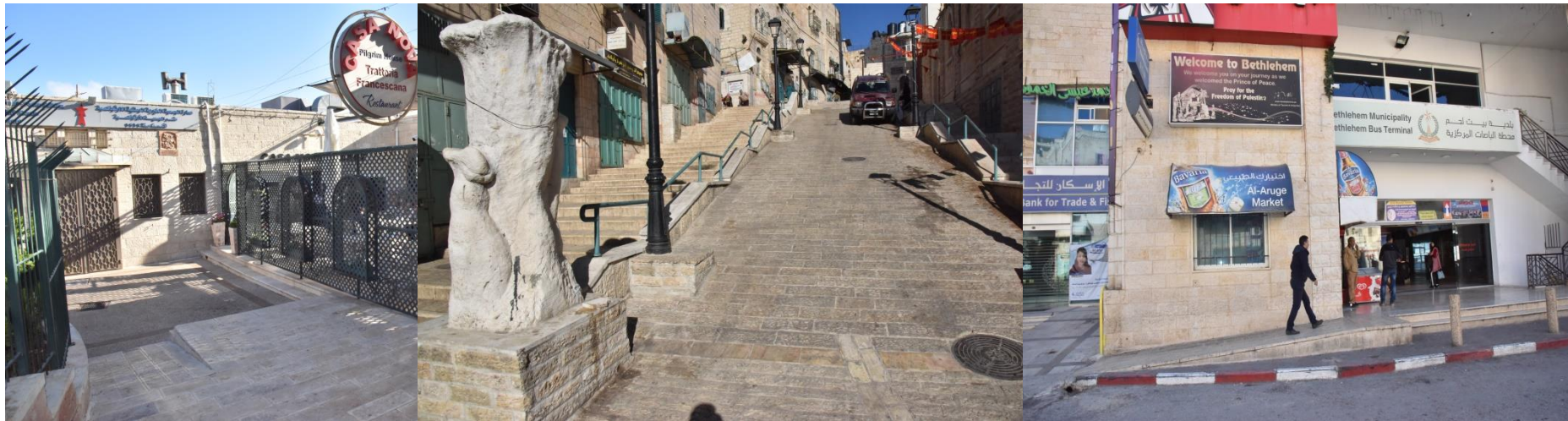


1. Institutional setting

- Bethlehem Municipality achieved its SDIP for the period 2014-2017, and is now in the implementation stage of the SDIP for the period 2018-2021.
- Ministry of Local Governance : Local development planning guide (30%) of participants from local civil society (women/youth/disabled people)
- Bethlehem Municipality: Organizational structure (Strategic planning and Performance Evaluation Unit), Municipal Council, Youth Council
- Participants contributing to different SDIP stages
- Organizations that represent people with disabilities: (Basic Planning Team member QADER for Community Development)

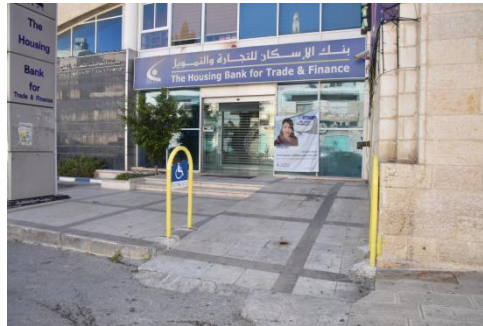
2. Starting point

- Marginalized target group: people with disabilities
- Laws and regulations: min. 5% of Human Recourses PwD
- Participation requirement: 30 % in the planning process.
- Lack of awareness towards PwD and active representations
- Changes in Municipal buildings and facilities: Mary Doty Park – Bus Station - BM main and old building – Public Toilets – Peace Center Building – Old Market.



3. Approach

- Signing agreement with PwD union
- Accessibility of public facilities
- Authority and decision making power through elections
- SDIP Committees membership in monitoring and evaluation
- Discount policies for PwD (Municipal fees and taxes)



4. Outputs

- PwD Representative: 1 BM employee + 1 BM Council member + 1 Y Council member + 1 SDIP Committee member
- SDIP Projects taking into consideration the needs of PwD: rehabilitation of vegetable markets, public parking, roads
- Activating the building law concerning accessibility, requirements of PwD before issuing the building license (new hotels, restaurants, commercial buildings, parks etc.)



5. Lessons

- Without being part of the process nothing can be achieved for the benefit of all. Be a partner first in order to highlight your needs.
- Activating policies, laws and regulation can protect the rights of marginalized groups.
- SDIP projects can match needs of all through active participation and social accountability.
- All citizens have the right to benefit from projects and Municipal services to achieve equality and inclusion.



6. Follow up

How to implement the SDIP action plan of 2018 through taking into consideration the needs of PwD :

- Infrastructure projects (roads rehabilitation # 14 streets)
- Rehabilitation of the Municipal building
- Establishment of public parking
- Awareness campaign to enhance PwDs participation
- Activating the building laws application in Bethlehem city
- Participatory preparation of a policy guide for the fulfillment of PwD needs in Municipal Services
- Accessibility to touristic, religious and historical sites and paths in Bethlehem Old City