

REFUSE COLLECTION BY COMMUNITY VEHICLES

CITY of BULAWAYO



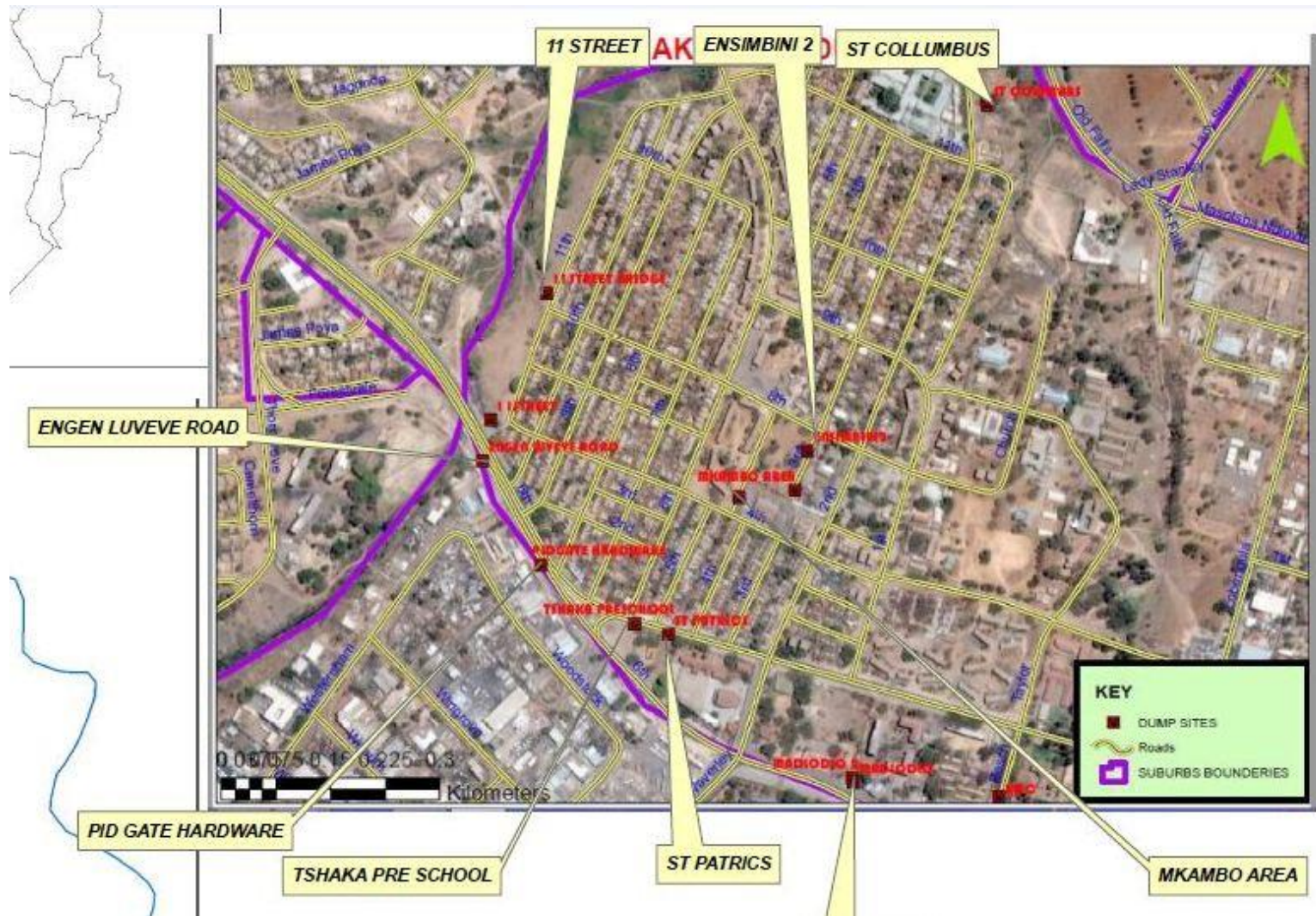
City of Kings, A leading transformative smart City by 2024

Why refuse removal by community vehicles ?

- Long collection intervals in domestic areas – **two weeks instead of one week**
- Empowering the community – **provide work for the local community**
- Shortage of vehicles (9 out 21 availability)
- High maintenance (tyre damages) and fuel costs
- Shortage of labour and resistance to change



Illegal Dumpsites around the city



City of Kings, A leading transformative smart City by 2024



Vulnerable groups

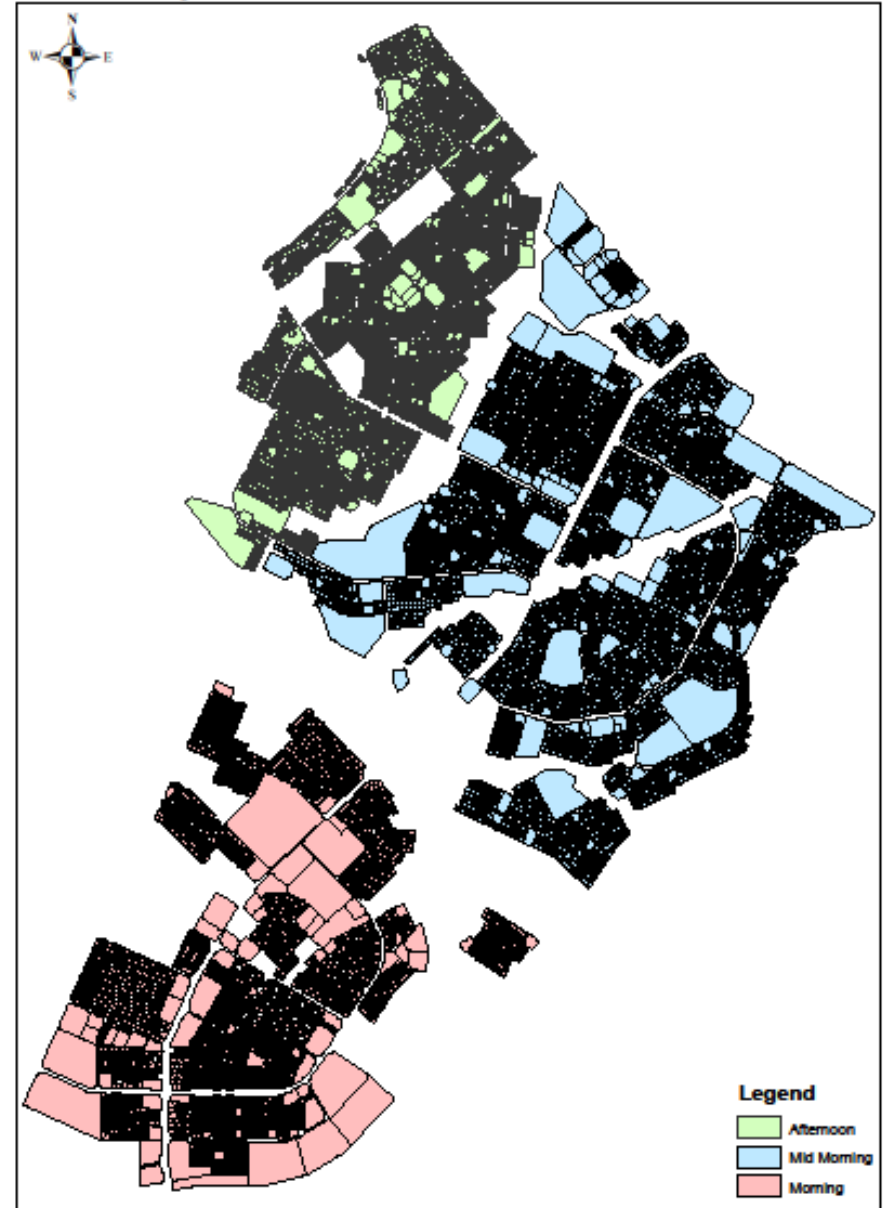
- The affected groups were women and children who were largely exposed to disease as a result of illegal dumping
- Women and youths were given priority in the selection of vehicles for the project



Implementation Strategy

- Divide the area into smaller units which were allocated to community vehicles based of GIS cadastral mapping
- Council refuse compactor truck is stationed at one point and all vehicles offload into the truck
- As a result a single truck can collect at 3 different points per day increased from 1600 to 12000 household

Monday solid waste collection schedule



Outcomes

- Reduced number of dumpsites
- Shortened collection interval to one week
- Reduced mileage for the vehicles
- Reduced for labourers
- Reduced fuel and maintenance costs

City of Kings, A leading transformative smart City by 2024



Reduced fuel and maintenance costs

BCC NO.	TOTAL FUEL AND MAINTENANCE COST 2015	TOTAL FUEL AND MAINTENANCE COST 2016	VARIANCE/ SAVINGS
008	US\$36 811.26	US\$33 254.54	US\$3 556.72
046	US\$35 367.89	US\$23 343.19	US\$12 024.70
045	US\$26 272.41	US\$17 477.06	US\$8 795.35

City of Kings, A leading transformative smart City by 2024



Lessons learnt

- There is need for intensive public awareness before and during the project
- A baseline should be established before the implementation of the project in order to be able to measure the impact
- Other factors should also be considered e.g. the standard of living of the residents for a more detailed assessment of the project.

