



The background features a blurred image of a doctor in a white coat with a stethoscope. Overlaid on this are several medical-themed graphics: a large blue cross with the word 'MEDICAL' below it, a blue pill, a blue silhouette of a person with a cross on their chest, and a blue globe with the word 'MEDICAL' below it. There are also circular progress indicators and a world map with location pins in the bottom right corner.

How do we challenge the Covid-19?

Jun Wang

「Content」➡

1

The situation & experiences all over the world

2

Challenges

3

Medical policies from government

4

The experiences of hospitals

5

Thoughts on the post epidemic Era

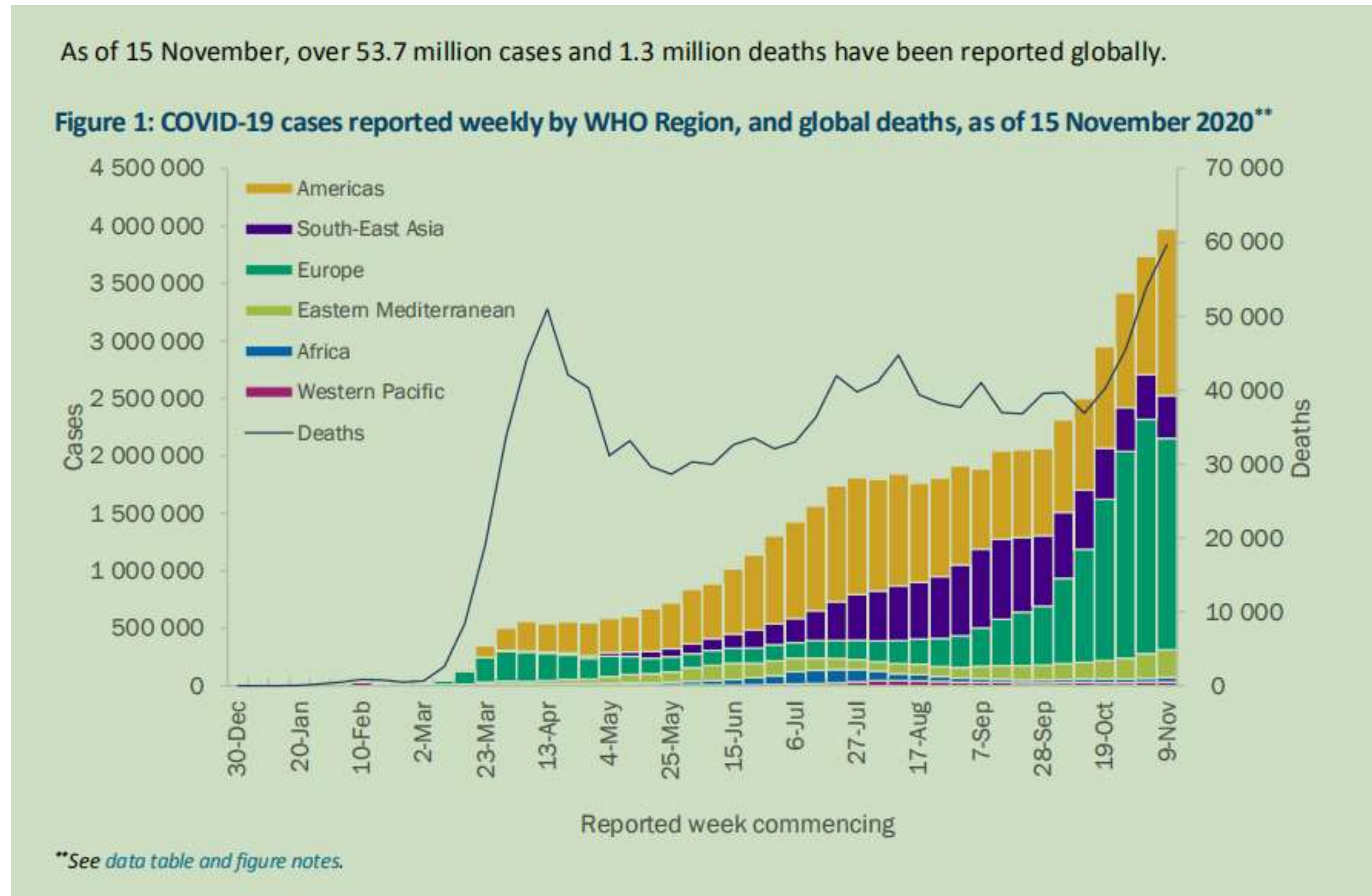
The situation all over the world

Still increasing!



Globally, as of 3:33pm CET, 17 November 2020, there have been **54771888 confirmed cases** of COVID-19, including **1324249 deaths**, reported to WHO.

Dashboard from WHO website



COVID-19 Weekly Epidemiological Update
Data as received by WHO from national authorities, as of 15 November 2020, 10 am CEST

The experience all over the world

Germany

Permanent Establishment: Permanent Working Group (STAKOB) on "Competence and Treatment Centre for Severe Infectious Diseases ", Robert Koch Institute

Uniform distribution: 7 treatment centres are evenly distributed throughout Germany

Unified management: regular training of personnel, uniform quality standards



Figure from the Robert Koch Institute (RKI) official website

The experience all over the world

America

Led by the Department of health and public services, the **army and the people are integrated**

U.S. public health service officer corps: more than 200 years' history, 6800 staff.

Rapid response: Level 1 rapid deployment troops, in place in 12 hours



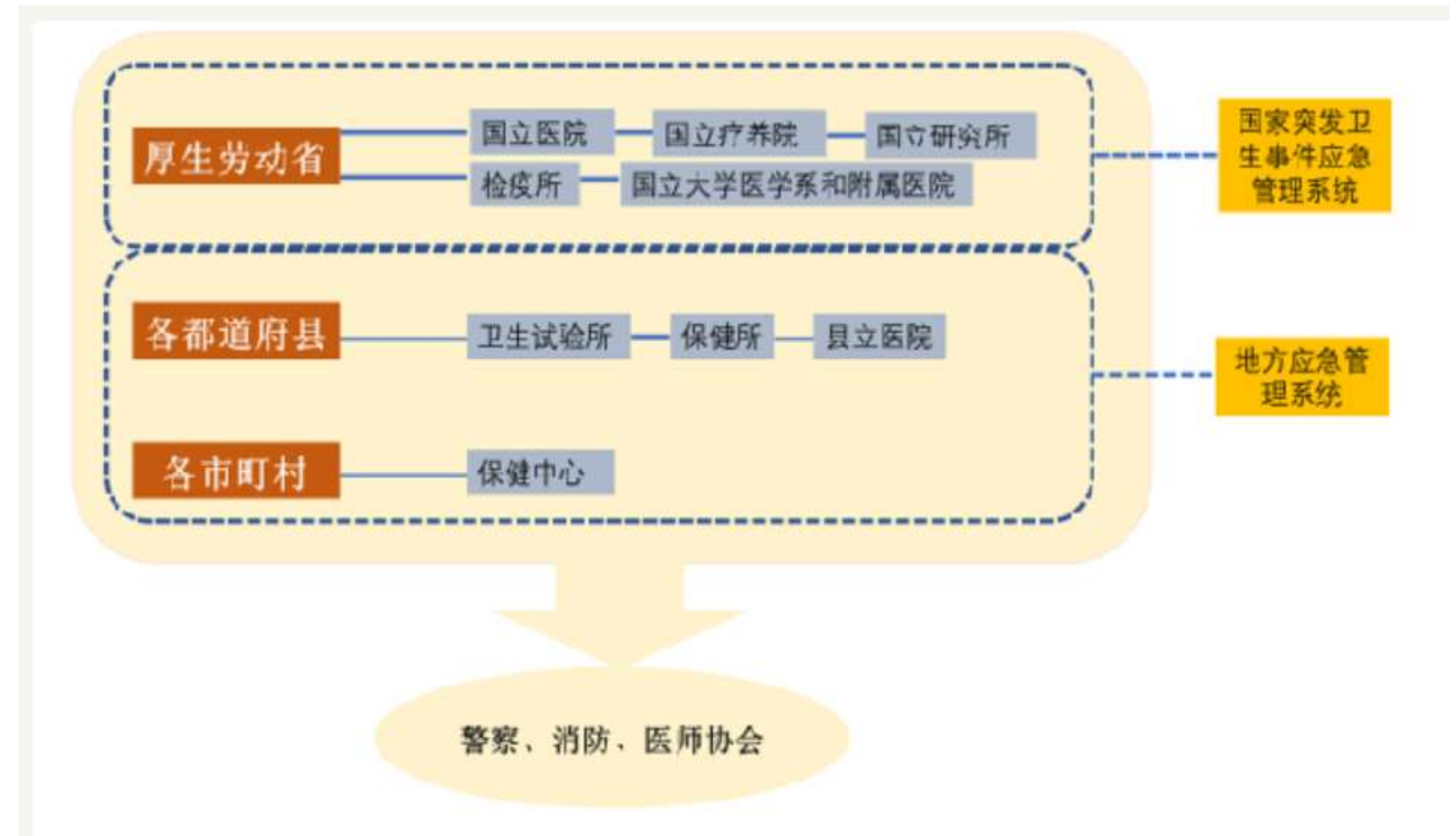
The experience all over the world

Japan

Attach importance to legislation: Basic Law on Disaster Response, Basic Plan for Disaster Prevention and other complete legal system guarantee

Education for All: Self-help, co-help and public assistance with the participation of individuals, communities, businesses, non-profit organizations and Governments

Information-sharing: Establishment of disaster information centres, information-sharing between central and local governments, private enterprises and organizations



Japanese public health emergency network

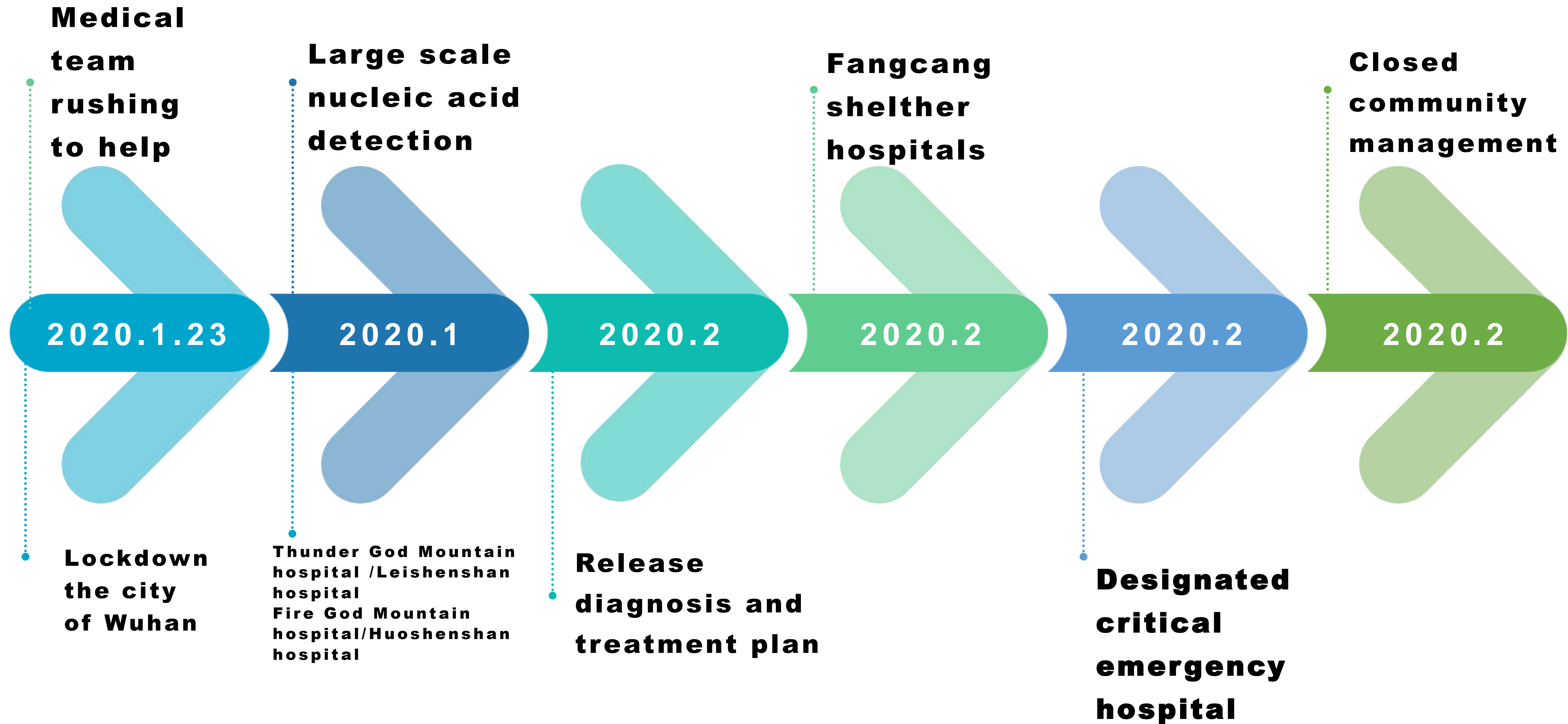
Challenge

At the beginning.....

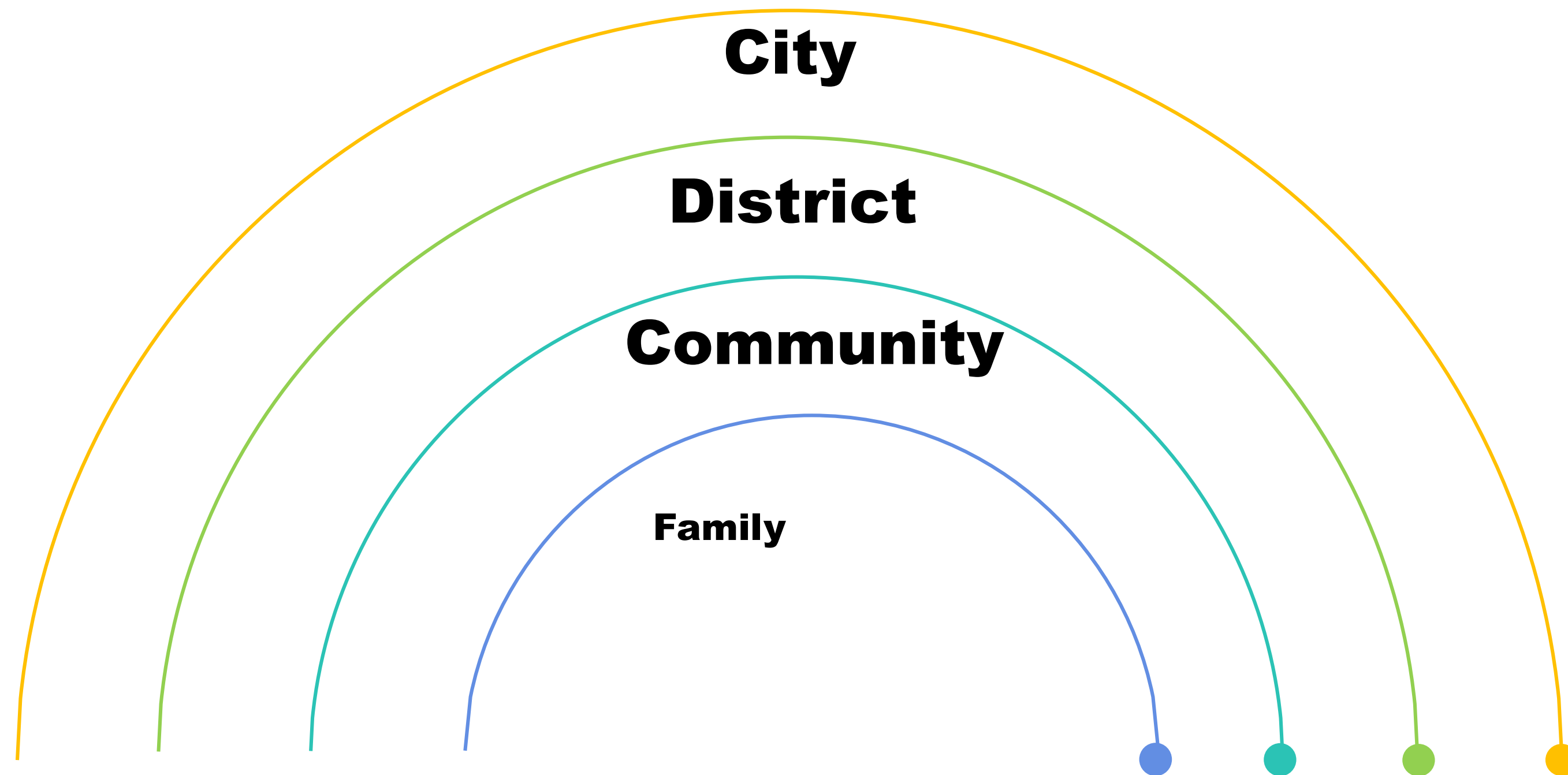
- 1 We don't have enough medical supplies.**
- 2 We don't have enough doctors and nurses.**
- 3 We don't have enough beds.**
- 4 We don't know exactly the therapeutic method.**



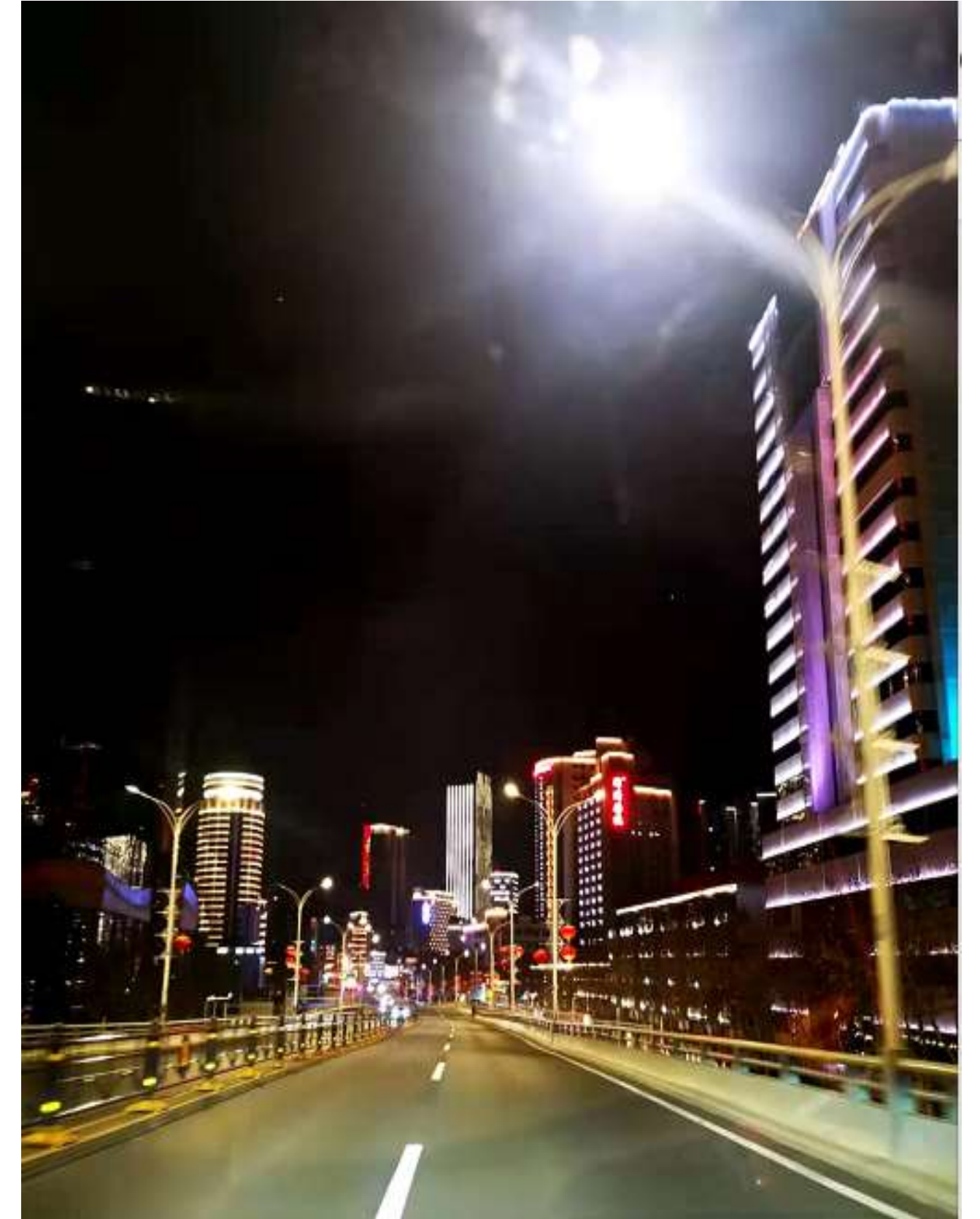
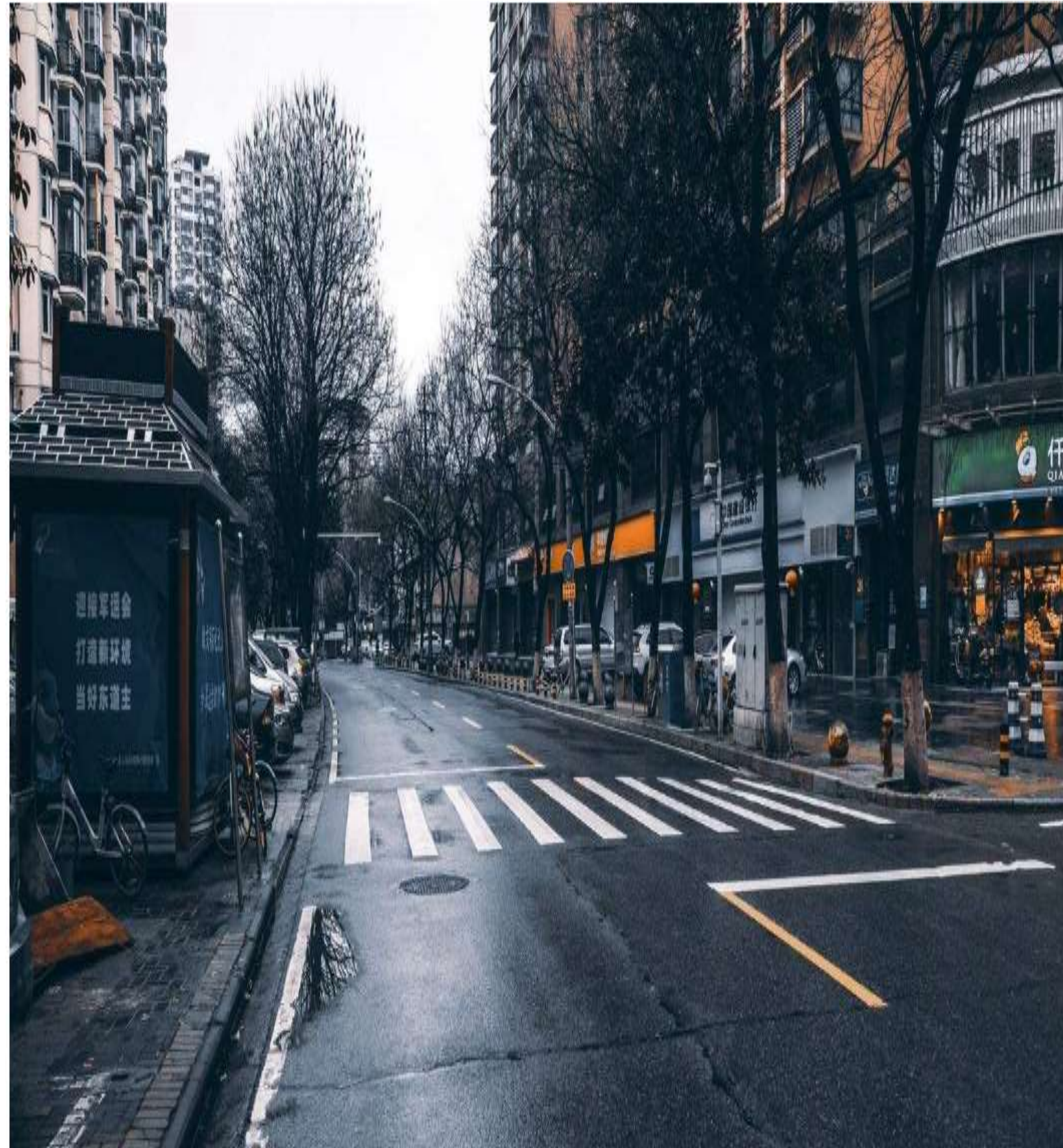
Policy Node



Isolate and block the infection chain



Lockdown City--Wuhan



Closed community management



Medical team rushing to help



Fangcang shelter hospitals



Fangcang shelter hospitals



Distribution of shelter hospitals in Wuhan

Basic function 1: isolation

Basic function 2: triage

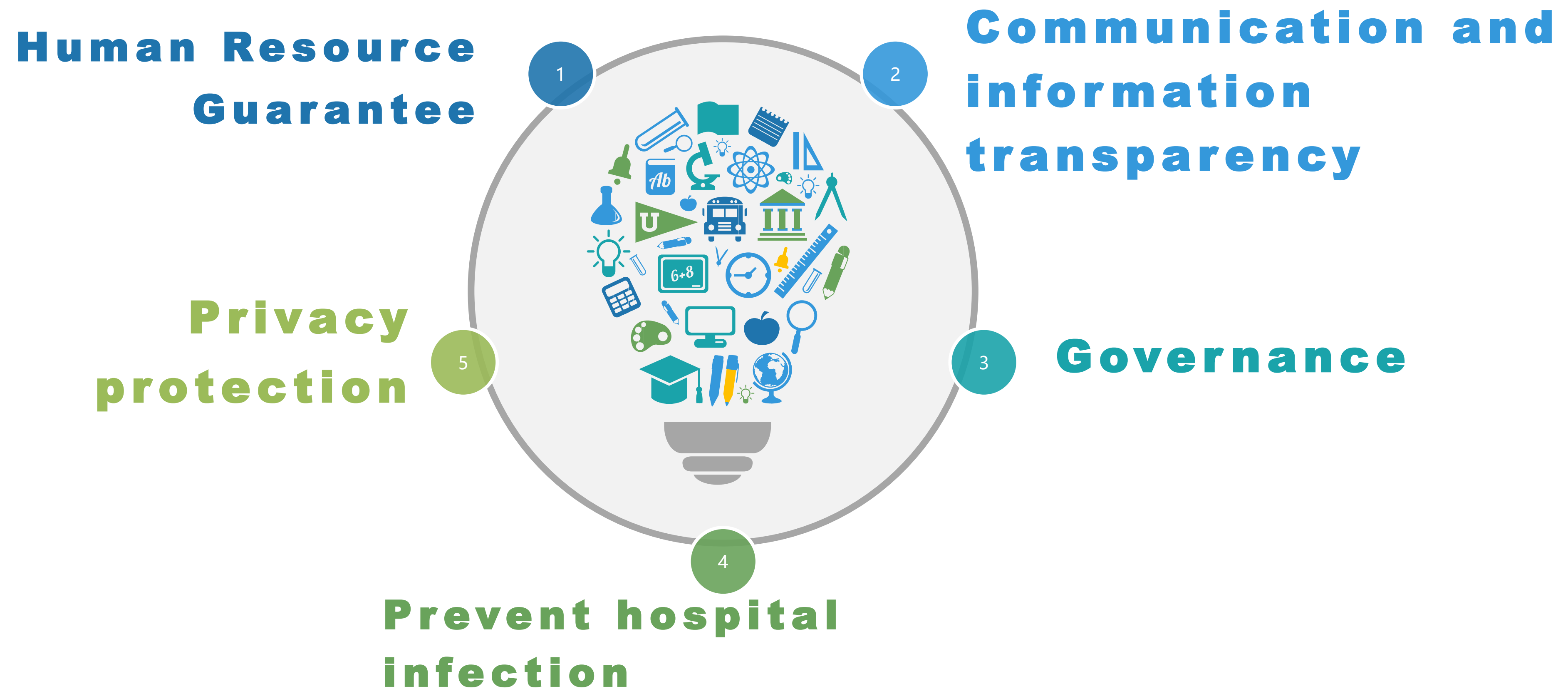
Basic function 3: basic medical care

Basic function 4: condition monitoring and rapid referral

Basic function 5: guarantee basic life and social participation

Fangcang shelter hospitals

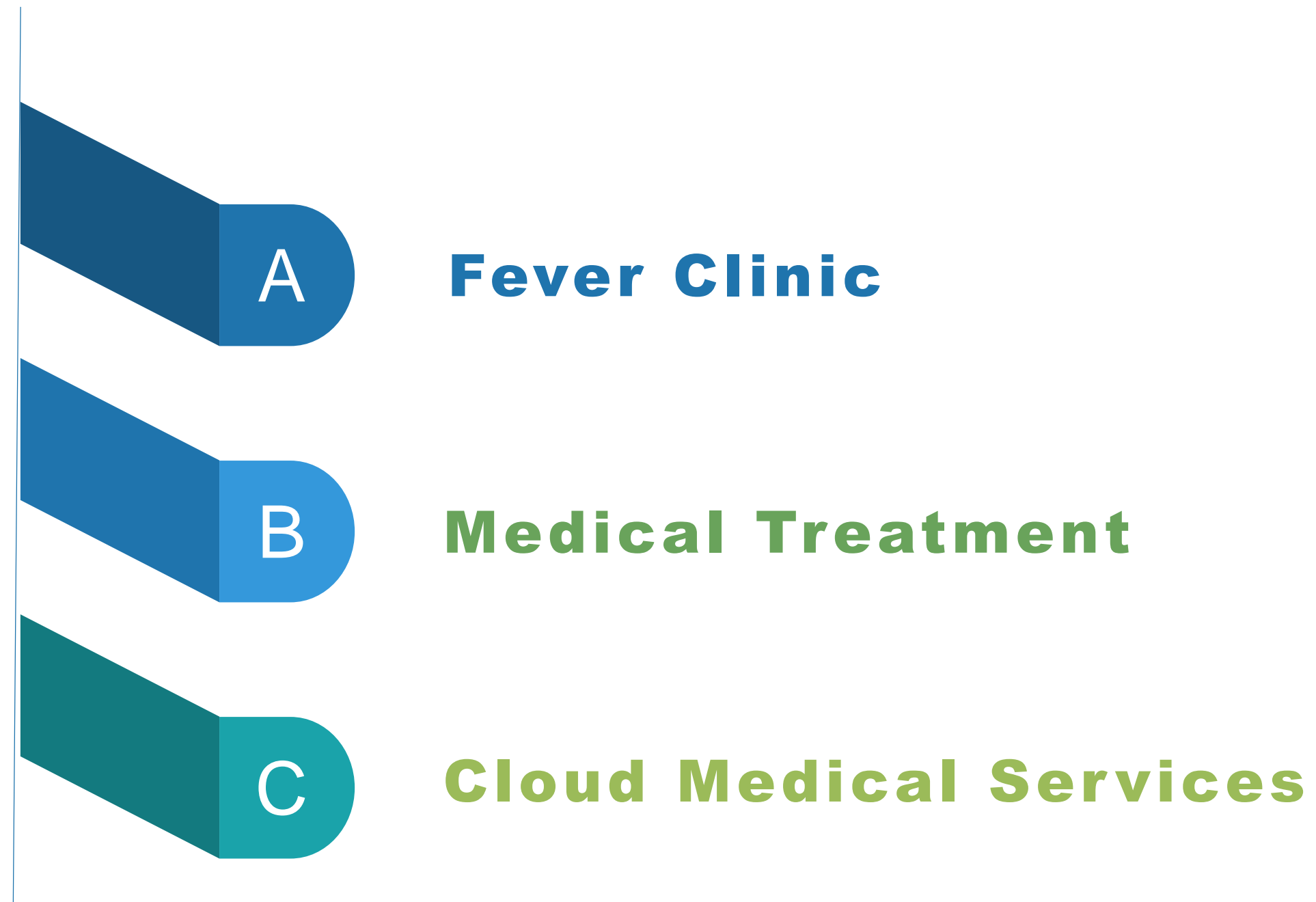
Key to the healthy operation of shelter hospital



Then we have...



Experiences of hospitals

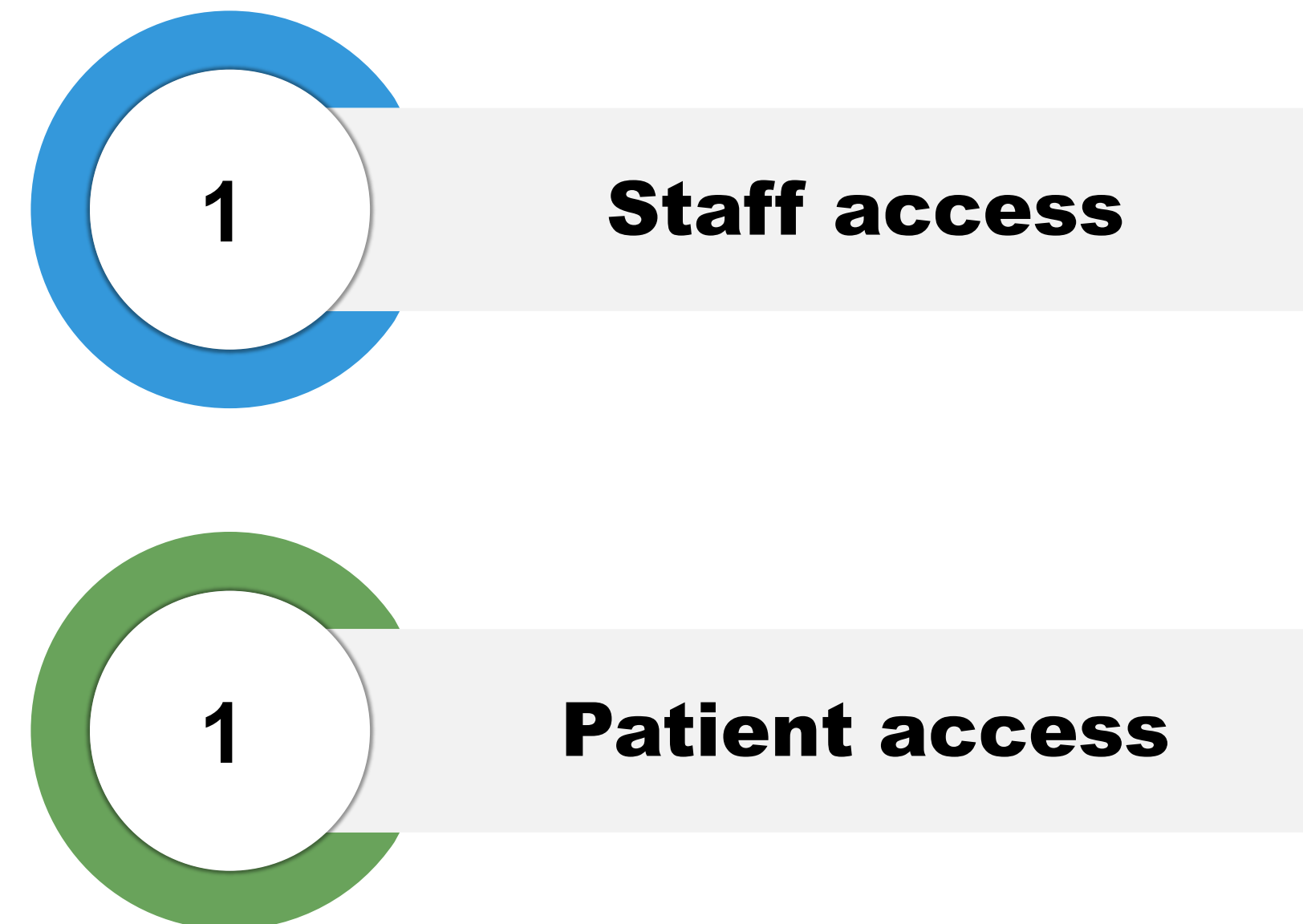


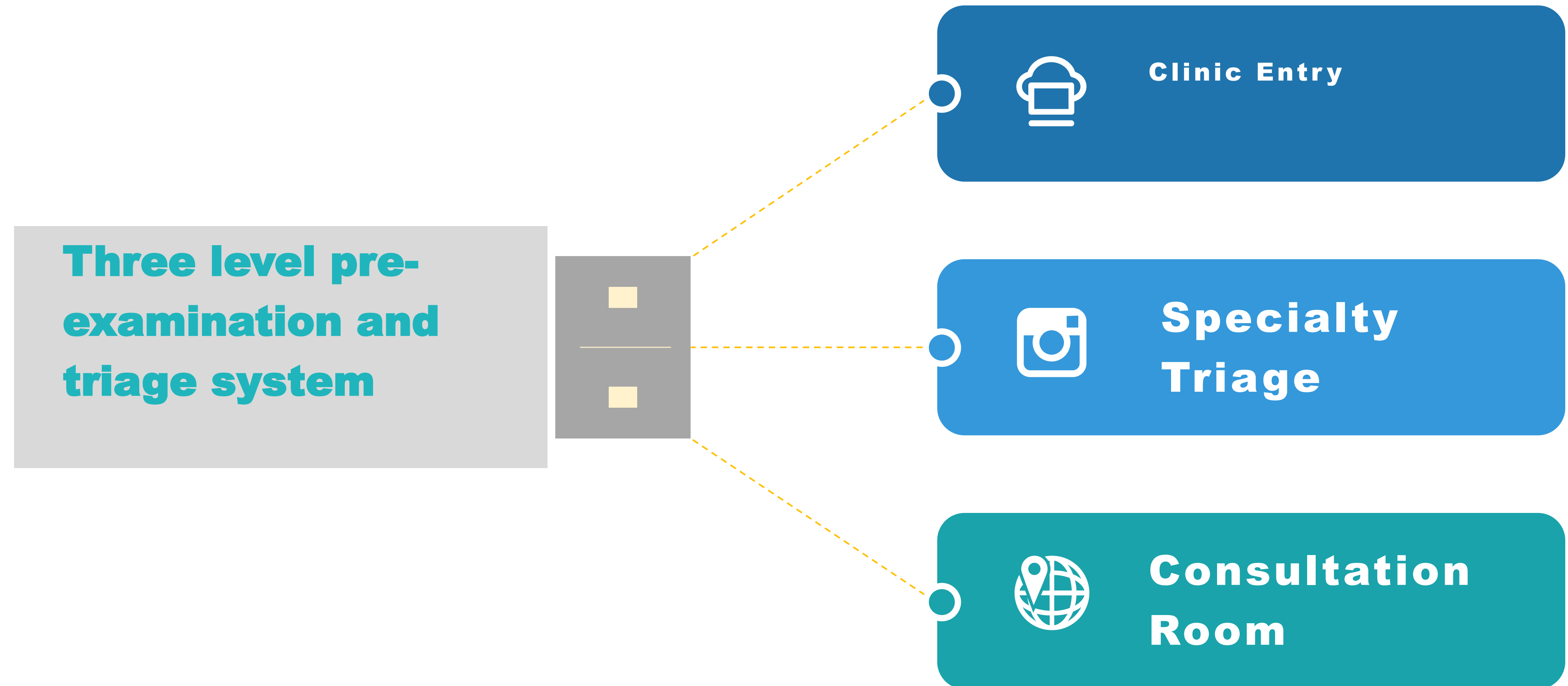
> Fever Clinic--Three zones and two accesses

Three Zones



Two accesses

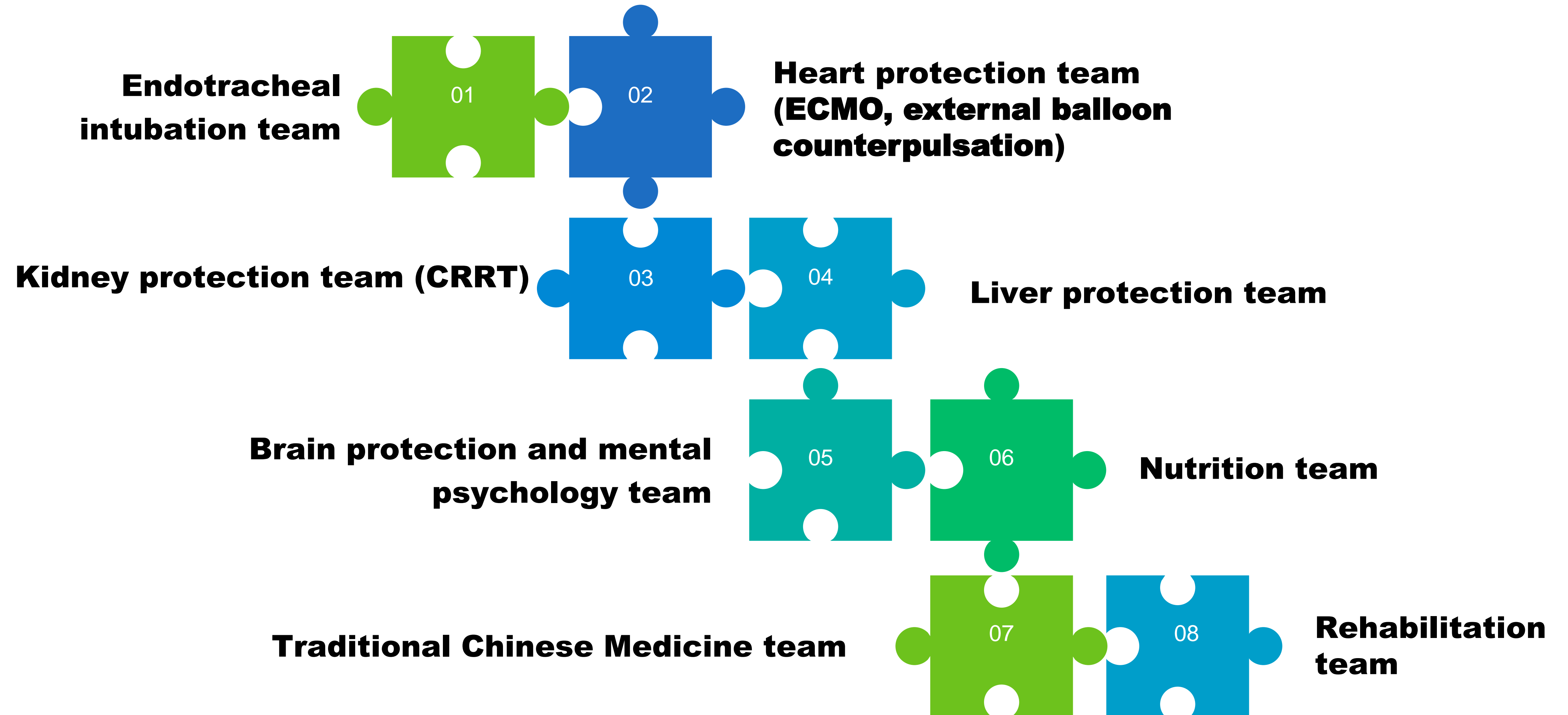




> Medical Treatment --Precise strategy



> Multi-disciplinary cooperation



➤ **Medical Treatment --Standard**

- **Diagnosis and protection standard**
- **Quality control standard and management process**

BY

Department of infection management

Department of respiratory and critical care medicine

Department of critical care medicine

Department of pathology

Department of blood transfusion

Department of clinical nutrition

...

> Innovative services--Cloud Medical Services

By means of the Internet, AI, Internet of Objects and other technological innovation applications, hospitals provide online consultation, online health assessment, psychological counseling, medical guidance and other cloud medical and health services for people during the period of epidemic prevention and control.

Cloud Clinic

Medicine mailing



Picture consultation
Video consultation

**Check document
online**

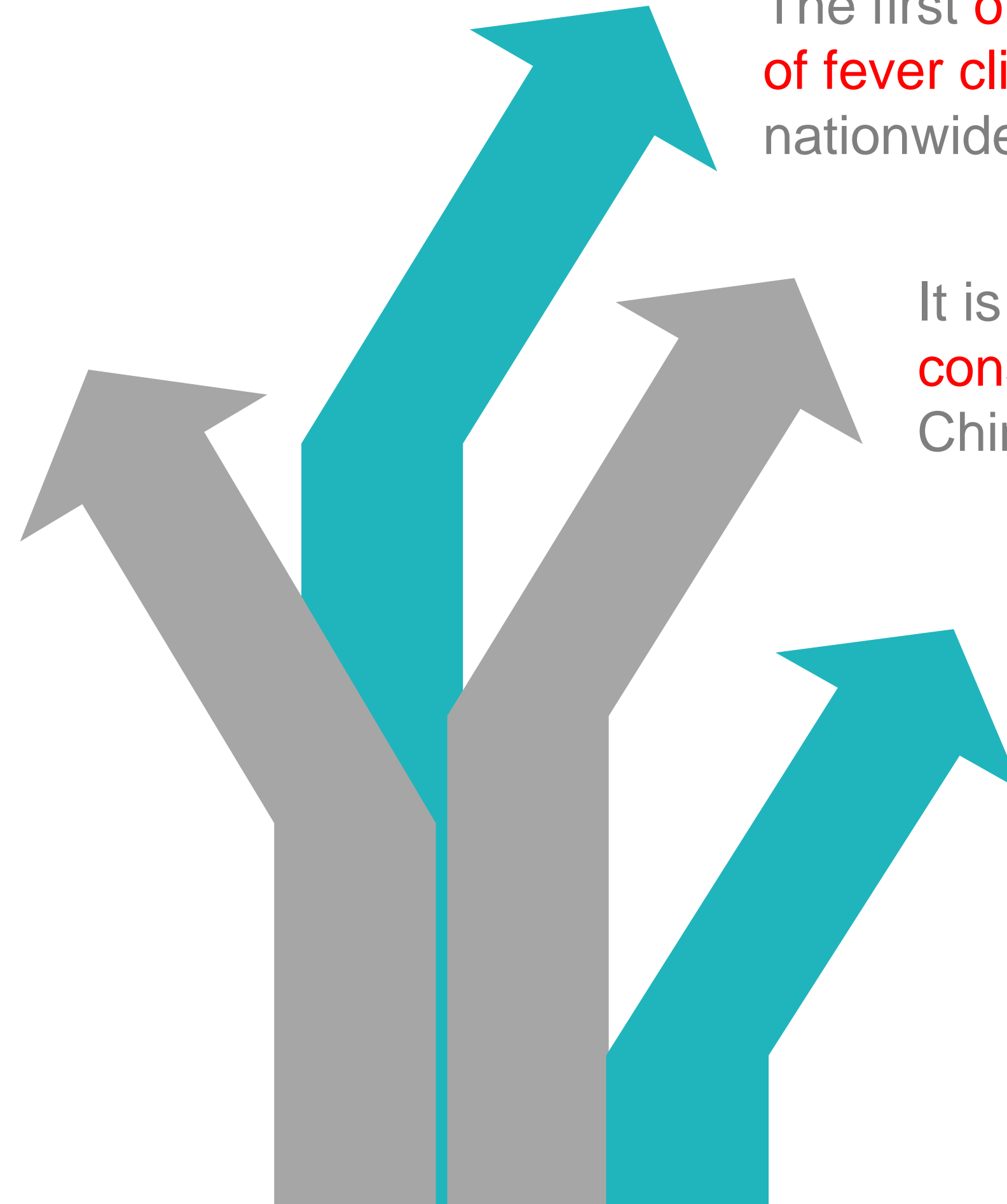
> Cloud Medical Services

Hospital cloud medical services have served nearly 240,000 people for **free**, including nearly 90,000 fever patients.

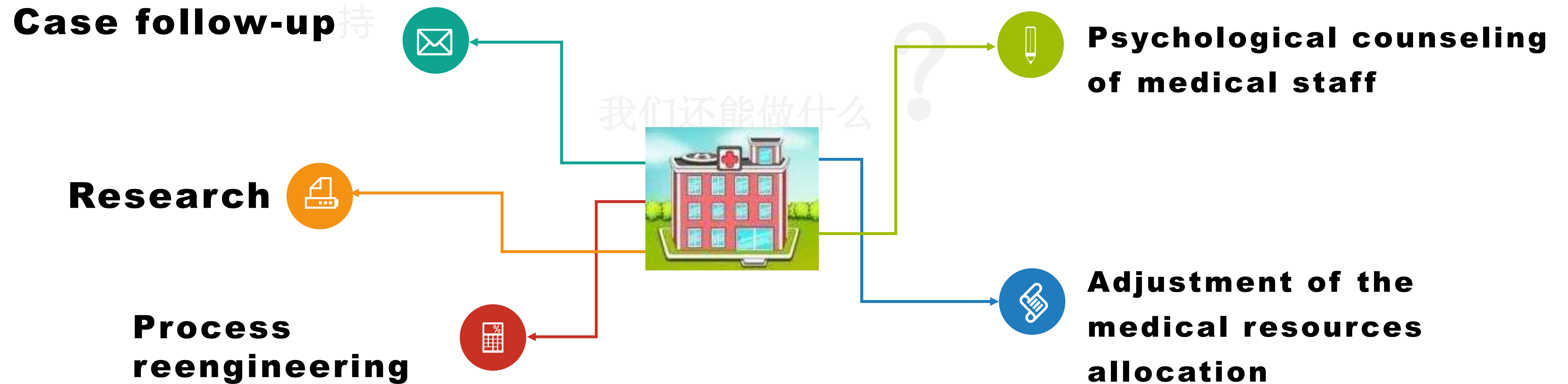
The first **online inquiry and consultation of fever clinic** has been opened nationwide(Jan.24th,2020)

It is the first to open **online video consultation** in China(Feb.14th,2020)

Take the lead in spreading cloud **Science Popularization**: The science popularization expert group compiled 12 pieces of science popularization with pictures and texts, which became the reassurance of the general public.



Thoughts on the post epidemic Era



Thoughts on the post epidemic Era

GOVERNMENT



01

Establish early warning and feedback mechanism of public health in peacetime and wartime

02

Establish medical emergency supply security system

03

**Set up a compound public health emergency team
(strengthen the team of general practitioners)**

04

Strengthen public health education and training

05

Establish National Public Health Event Data Network and Monitoring Indicators System

A photograph of a paved road stretching into the distance. A large white arrow is painted on the road surface, pointing towards the horizon. Below the arrow, the words "Time for Change" are painted in a large, white, sans-serif font. The road is flanked by green grass and shrubs under a clear sky.

*Time for
Change*



THANK YOU

Jun Wang
brendawj2006@163.com